

高性能设计
High
performance

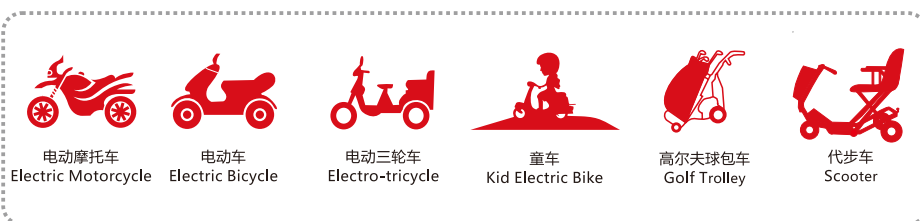
AGM技术
AGM
separator

多元稀土合金
Multi-element
patent rare
earth alloy

80%放电循环
400~600次
80%DOD
400~600cycles



应用领域 Product Applications



产品特性 Product Specifications

额定电压 Nominal Voltage	额定容量 Rated Capacity(2hr)	推荐使用温度范围 Operating Temp. Range	不同温度下的容量 Capacity Effected by Temp.	存放容量@25°C/77°F Capacity vs Storage Time
12V	13.2Ah@25°C (77°F, 1.75V/cell)	放电 Discharge: -20~+55°C (-4~131°F) 充电 Charge: 0~+40°C (32~104°F) 储存 Storage: -20~+50°C (-4~122°F) 最佳 Optimum: 25±3°C (77±5°F)	+ 4 0°C (1 0 4°F): 1 0 2 % + 3 0°C (8 6°F): 1 0 0 % 0 °C (3 2 °F): 8 5 % - 1 5°C (5 °F): 7 5 %	3个月(three month): 90% 6个月(six months): 80% 9个月(nine months): 65%

物理特性 Physical Specifications

材料 Material	尺寸 Dimensions				重量 Weight
	长 Length	宽 Width	高 Height	总高 TH	
ABS UL94-HB (阻燃 ABS UL94-V0)	151±3mm (5.94 inch.)	99±2mm (3.90 inch.)	98±2mm (3.86 inch.)	103±2mm (4.06 inch.)	4.5kg (9.92lbs)

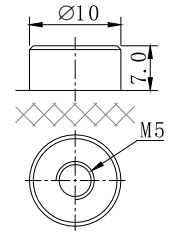
恒流放电参数 Constant Current Discharge(A)@25°C(77°F)

终止电压/时间 F.V / Time	5min	10min	15min	20min	30min	45min	1h	2h	3h	4h	5h	6h	8h	10h	20h
1.85V/cell	52.8	37.9	30.4	25.2	18.9	15.4	11.3	6.45	4.67	3.61	2.92	2.45	1.85	1.50	0.78
1.80V/cell	57.0	41.1	31.7	25.9	19.3	15.7	11.5	6.54	4.73	3.65	2.95	2.47	1.88	1.52	0.80
1.75V/cell	60.3	42.5	32.8	26.6	19.7	16.0	11.7	6.62	4.78	3.67	2.97	2.49	1.89	1.53	0.80
1.70V/cell	62.0	43.6	33.5	27.2	20.1	16.3	11.8	6.69	4.82	3.69	2.98	2.50	1.90	1.53	0.81
1.67V/cell	63.2	44.5	34.1	27.8	20.5	16.5	11.9	6.74	4.84	3.71	2.99	2.51	1.90	1.54	0.81
1.60V/cell	64.8	45.3	34.9	28.4	21.0	16.8	12.1	6.83	4.87	3.72	3.00	2.51	1.91	1.54	0.81

恒功率放电参数 Constant Power Discharge(W/cell)@25°C(77°F)

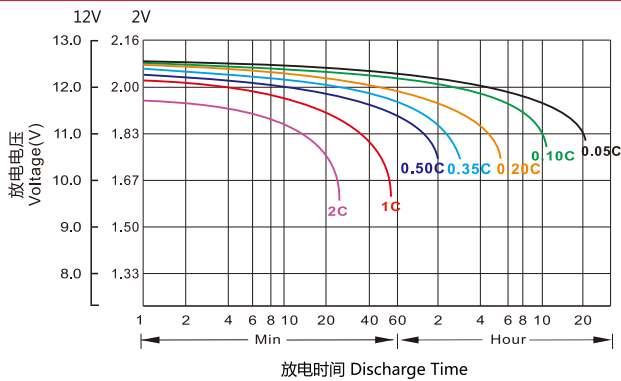
终止电压/时间 F.V / Time	5min	10min	15min	20min	30min	45min	1h	2h	3h	4h	5h	6h	8h	10h	20h
1.85V/cell	98.3	71.8	58.3	48.8	37.2	30.6	22.4	12.9	9.34	7.23	5.85	4.90	3.71	3.00	1.57
1.80V/cell	104.8	77.6	60.8	50.1	38.1	31.2	22.8	13.1	9.46	7.29	5.90	4.95	3.76	3.04	1.60
1.75V/cell	108.2	80.2	62.7	51.3	38.8	31.8	23.2	13.2	9.56	7.34	5.93	4.98	3.77	3.05	1.60
1.70V/cell	108.7	82.0	63.9	52.4	39.5	32.2	23.4	13.3	9.62	7.37	5.95	4.99	3.79	3.06	1.61
1.67V/cell	108.9	83.5	65.2	53.6	40.2	32.6	23.7	13.4	9.65	7.39	5.96	5.00	3.79	3.07	1.61
1.60V/cell	110.4	84.7	66.5	54.7	41.1	33.1	23.9	13.6	9.70	7.41	5.97	5.01	3.80	3.07	1.61

外形尺寸 Battery Dimensions(mm)

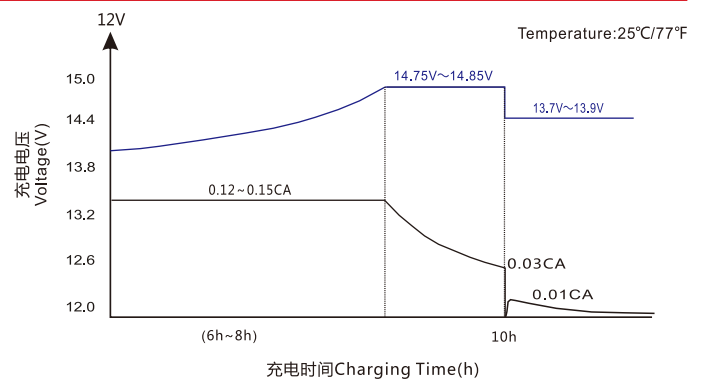


电性能 Electrical Characteristics

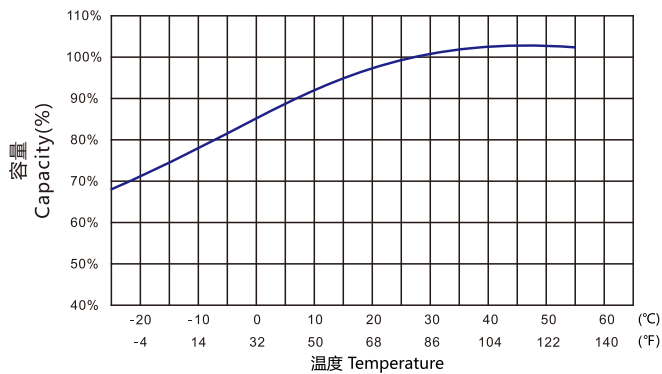
不同倍率放电特性 Discharge Characteristics(25°C/77°F)



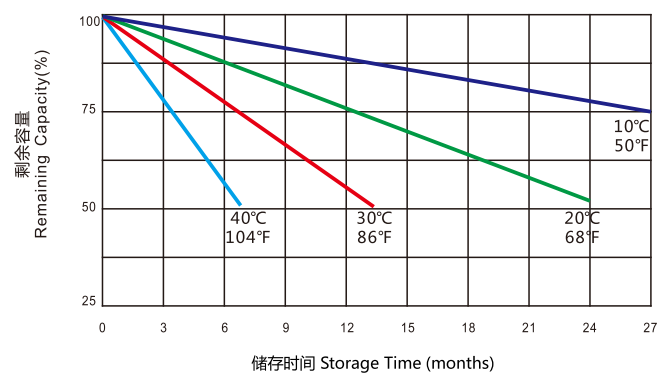
充电特性曲线 Charging Characteristics



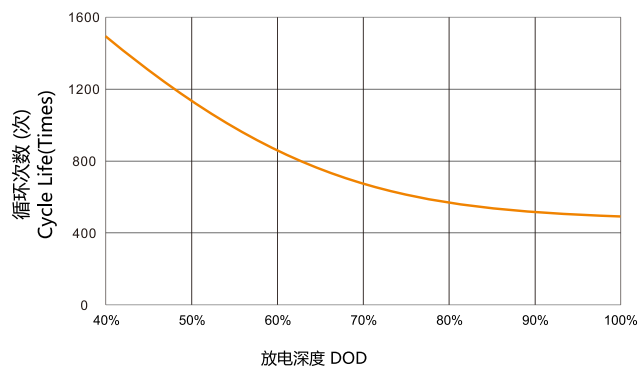
电池容量曲线 Capacity vs Temperature



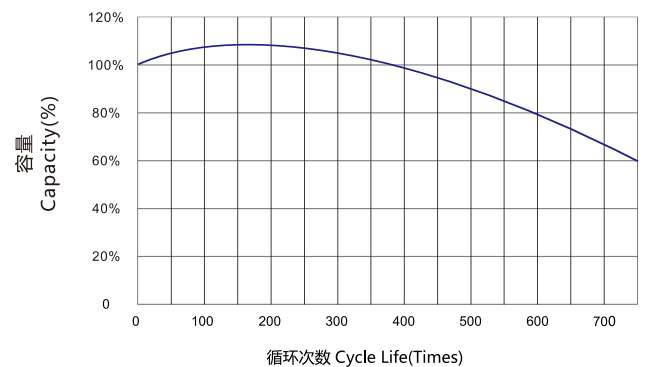
自放电曲线 Self-discharge vs Time



循环次数与放电深度 Cycle Life vs Depth of Discharge



循环次数与容量 Cycle Life vs Capacity@25°C(77°F)



充电电流 Charge Current

限流: ≤0.3CA
Limited current: ≤0.3CA

快速充电 Fast Charge

恒压 Constant voltage: 14.80V@25°C(77°F)
温度补偿系数 Temp. Coefficient: -30mV/°C

浮充充电 Float Charge

恒压 Constant voltage: 13.80V@25°C(77°F)
温度补偿系数 Temp. Coefficient: -18mV/°C