

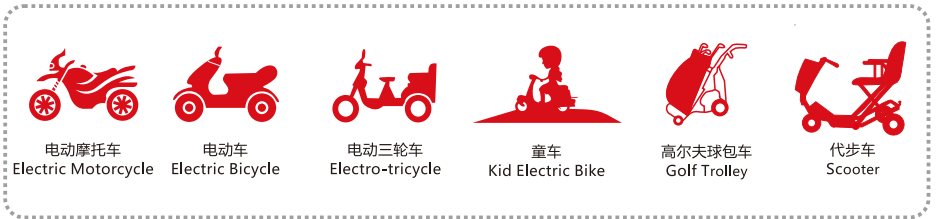
高性能设计  
High performance

AGM技术  
AGM separator

多元稀土合金  
Multi-element patent rare earth alloy

80%放电循环  
400~600次  
80%DOD  
400~600cycles

## 应用领域 Product Applications



## 产品特性 Product Specifications

额定电压 Nominal Voltage	额定容量 Rated Capacity(2hr)	推荐使用温度范围 Operating Temp. Range	不同温度下的容量 Capacity Effected by Temp.	存放容量@25°C/77°F Capacity vs Storage Time
12V	22.3Ah@25°C (77°F, 1.75V/cell)	放电 Discharge: -20~+55°C (-4~131°F) 充电 Charge: 0~+40°C (32~104°F) 储存 Storage: -20~+50°C (-4~122°F) 最佳 Optimum: 25±3°C (77±5°F)	+ 4 0°C (1 0 4°F): 1 0 2 % + 3 0°C (8 6°F): 1 0 0 % 0 °C ( 3 2 °F): 8 5 % - 1 5°C ( 5 °F): 7 5 %	3个月(three month): 90% 6个月(six months): 80% 9个月(nine months): 65%

## 物理特性 Physical Specifications

材料 Material	尺寸 Dimensions				重量 Weight
ABS UL94-HB (阻燃 ABS UL94-V0)	长 Length	宽 Width	高 Height	总高 TH	7.1kg (15.7lbs)
	181±3mm (7.13 inch.)	77±2mm (3.03 inch.)	169±2mm (6.65 inch.)	175±2mm (6.89 inch.)	

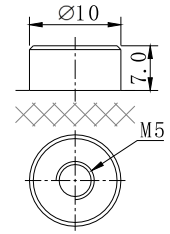
## 恒流放电参数 Constant Current Discharge(A)@25°C(77°F)

终止电压/时间 F.V / Time	5min	10min	15min	20min	30min	45min	1h	2h	3h	4h	5h	6h	8h	10h	20h
1.85V/cell	89.1	63.9	51.3	42.5	31.8	26.1	19.0	10.9	7.88	6.09	4.93	4.13	3.13	2.53	1.32
1.80V/cell	96.2	69.3	53.5	43.7	32.6	26.6	19.4	11.0	7.98	6.15	4.97	4.17	3.17	2.57	1.35
1.75V/cell	101.7	71.8	55.4	44.8	33.3	27.1	19.7	11.2	8.07	6.20	5.01	4.20	3.18	2.58	1.35
1.70V/cell	104.7	73.6	56.5	45.9	33.9	27.4	19.9	11.3	8.13	6.23	5.03	4.22	3.20	2.59	1.36
1.67V/cell	106.6	75.2	57.6	46.9	34.5	27.9	20.2	11.4	8.17	6.25	5.05	4.23	3.21	2.59	1.36
1.60V/cell	109.4	76.5	58.9	47.9	35.4	28.3	20.3	11.5	8.22	6.28	5.06	4.24	3.22	2.60	1.36

## 恒功率放电参数 Constant Power Discharge(W/cell)@25°C(77°F)

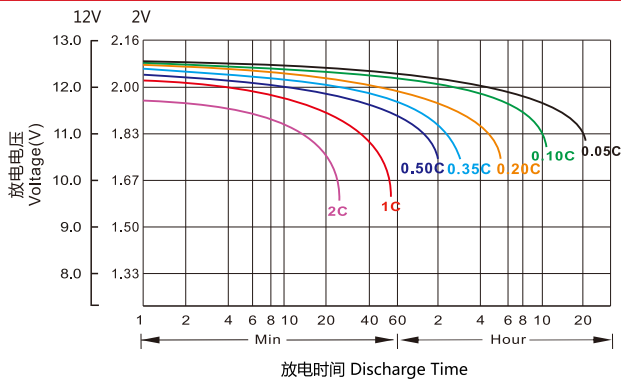
终止电压/时间 F.V / Time	5min	10min	15min	20min	30min	45min	1h	2h	3h	4h	5h	6h	8h	10h	20h
1.85V/cell	165.9	121.1	98.3	82.3	62.7	51.7	37.8	21.7	15.8	12.2	9.87	8.27	6.26	5.06	2.65
1.80V/cell	176.8	131.0	102.5	84.6	64.2	52.6	38.5	22.1	16.0	12.3	9.95	8.35	6.34	5.13	2.70
1.75V/cell	182.5	135.3	105.9	86.6	65.5	53.6	39.1	22.3	16.1	12.4	10.0	8.40	6.36	5.15	2.71
1.70V/cell	183.5	138.3	107.9	88.5	66.6	54.3	39.6	22.5	16.2	12.4	10.0	8.43	6.39	5.17	2.72
1.67V/cell	183.7	140.9	110.0	90.4	67.8	55.1	40.0	22.6	16.3	12.5	10.1	8.44	6.40	5.17	2.72
1.60V/cell	186.2	142.9	112.3	92.4	69.4	55.9	40.3	22.9	16.4	12.5	10.1	8.45	6.41	5.18	2.72

**外形尺寸 Battery Dimensions(mm)**

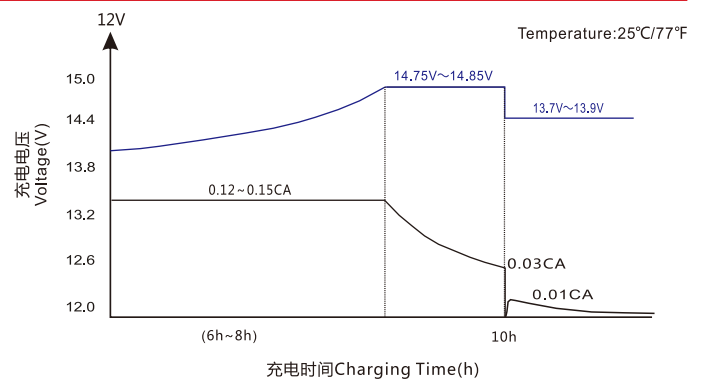


**电性能 Electrical Characteristics**

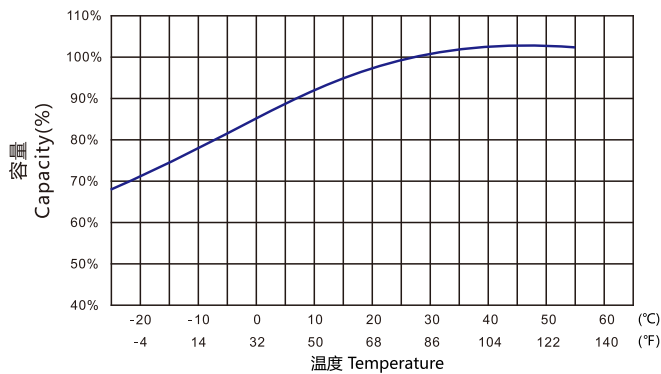
**不同倍率放电特性 Discharge Characteristics(25°C/77°F)**



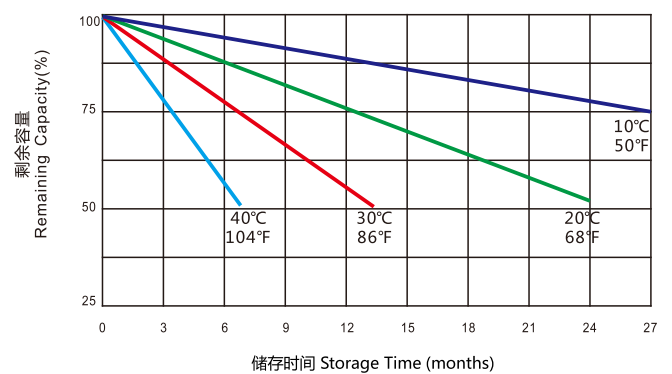
**充电特性曲线 Charging Characteristics**



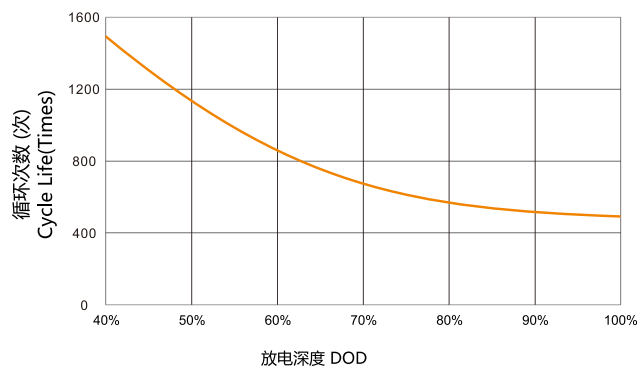
**电池容量曲线 Capacity vs Temperature**



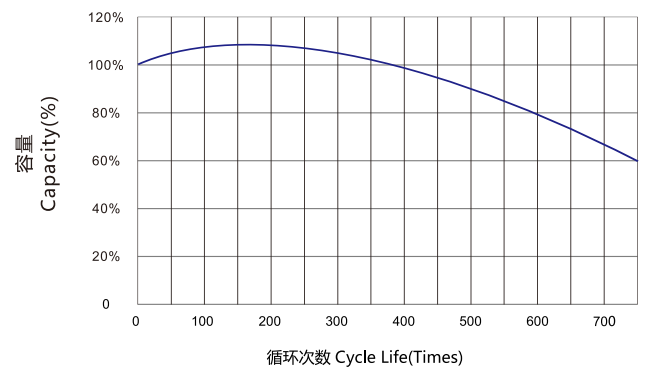
**自放电曲线 Self-discharge vs Time**



**循环次数与放电深度 Cycle Life vs Depth of Discharge**



**循环次数与容量 Cycle Life vs Capacity@25°C(77°F)**



**充电电流 Charge Current**

限流: ≤0.3CA  
Limited current: ≤0.3CA

**快速充电 Fast Charge**

恒压 Constant voltage: 14.80V@25°C(77°F)  
温度补偿系数 Temp. Coefficient: -30mV/°C

**浮充充电 Float Charge**

恒压 Constant voltage: 13.80V@25°C(77°F)  
温度补偿系数 Temp. Coefficient: -18mV/°C