



天能电池
TIANNENG BATTERY

6-EVF-35.5 (12V35.5Ah)

高性能设计
High performance

AGM技术
AGM separator

多元稀土合金
Multi-element patent rare earth alloy

80%放电循环
400~600次
80%DOD
400~600cycles



应用领域 Product Applications



电动摩托车
Electric Motorcycle



电动车
Electric Bicycle



电动三轮车
Electro-tricycle



童车
Kid Electric Bike



高尔夫球包车
Golf Trolley



代步车
Scooter

产品特性 Product Specifications

额定电压 Nominal Voltage	额定容量 Rated Capacity(3hr)	推荐使用温度范围 Operating Temp. Range	不同温度下的容量 Capacity Effected by Temp.	存放容量@25°C/77°F Capacity vs Storage Time
12V	35.5Ah@25°C (77°F, 1.75V/cell)	放电 Discharge: -20~+55°C (-4~131°F) 充电 Charge: 0~+40°C (32~104°F) 储存 Storage: -20~+50°C (-4~122°F) 最佳 Optimum: 25±3°C (77±5°F)	+ 4 0°C (1 0 4°F): 1 0 2 % + 3 0°C (8 6°F): 1 0 0 % 0 °C (3 2 °F): 8 5 % - 1 5°C (5 °F): 7 5 %	3个月(three month): 90 % 6个月(six months): 80 % 9个月(nine months): 65 %

物理特性 Physical Specifications

材料 Material	尺寸 Dimensions				重量 Weight
ABS UL94-HB (阻燃 ABS UL94-V0)	长 Length	宽 Width	高 Height	总高 TH	10.4kg (22.9lbs)
	267±3mm (10.5 inch.)	77±2mm (3.03 inch.)	169±2mm (6.65 inch.)	175±2mm (6.89 inch.)	

恒流放电参数 Constant Current Discharge(A)@25°C(77°F)

终止电压/时间 F.V / Time	5min	10min	15min	20min	30min	45min	1h	2h	3h	4h	5h	6h	8h	10h	20h
1.85V/cell	129.0	92.5	74.3	61.6	46.1	37.7	27.5	15.8	11.4	8.82	7.14	5.98	4.53	3.66	1.92
1.80V/cell	139.4	100.4	77.5	63.4	47.2	38.5	28.0	16.0	11.6	8.91	7.20	6.04	4.59	3.71	1.96
1.75V/cell	147.3	104.0	80.2	64.9	48.2	39.2	28.5	16.2	11.7	8.97	7.25	6.08	4.61	3.73	1.96
1.70V/cell	151.6	106.6	81.8	66.4	49.1	39.7	28.8	16.3	11.8	9.02	7.29	6.11	4.63	3.75	1.97
1.67V/cell	154.4	108.8	83.4	67.9	50.0	40.4	29.2	16.5	11.8	9.06	7.31	6.13	4.64	3.75	1.97
1.60V/cell	158.4	110.8	85.3	69.4	51.3	41.0	29.5	16.7	11.9	9.09	7.33	6.14	4.66	3.76	1.97

恒功率放电参数 Constant Power Discharge(W/cell)@25°C(77°F)

终止电压/时间 F.V / Time	5min	10min	15min	20min	30min	45min	1h	2h	3h	4h	5h	6h	8h	10h	20h
1.85V/cell	240.3	175.4	142.4	119.2	90.9	74.8	54.8	31.5	22.8	17.7	14.3	12.0	9.07	7.32	3.84
1.80V/cell	256.0	189.7	148.5	122.5	93.0	76.2	55.7	31.9	23.1	17.8	14.4	12.1	9.18	7.43	3.91
1.75V/cell	264.3	195.9	153.3	125.4	94.9	77.6	56.6	32.3	23.4	17.9	14.5	12.2	9.21	7.46	3.92
1.70V/cell	265.7	200.3	156.3	128.2	96.5	78.6	57.3	32.6	23.5	18.0	14.5	12.2	9.25	7.48	3.94
1.67V/cell	266.1	204.1	159.2	131.0	98.1	79.8	58.0	32.8	23.6	18.1	14.6	12.2	9.26	7.49	3.94
1.60V/cell	269.7	206.9	162.6	133.7	100.5	80.9	58.4	33.2	23.7	18.1	14.6	12.2	9.28	7.50	3.93

ISO9001

ISO14001

OHSAS18001

IEC

ROHS



MH61820

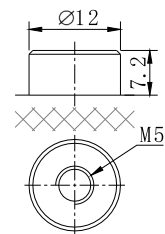


Tianneng Battery Group Co., Ltd.

Email: export@tiannenggroup.com

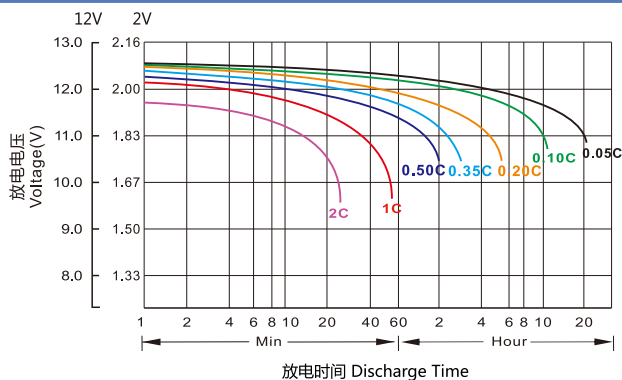
Http://www.tiannenggroup.com

外形尺寸 Battery Dimensions(mm)

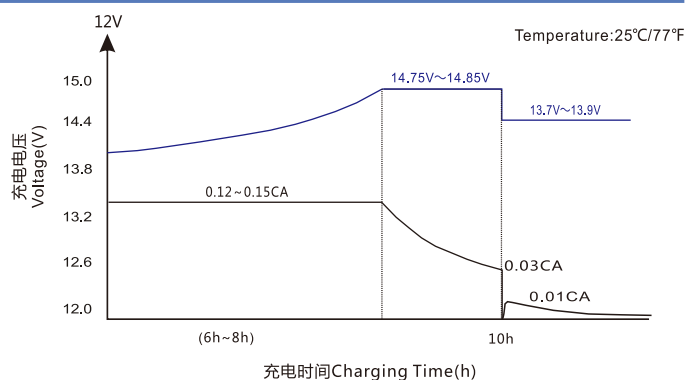


电性能 Electrical Characteristics

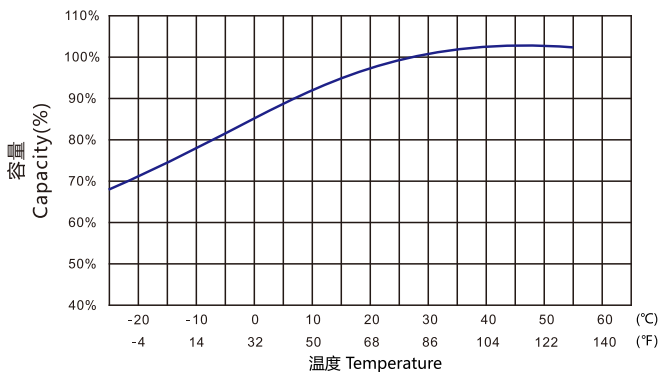
不同倍率放电特性 Discharge Characteristics(25°C/77°F)



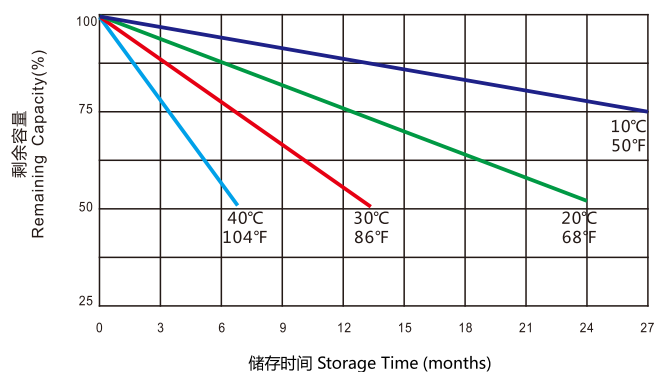
充电特性曲线 Charging Characteristics



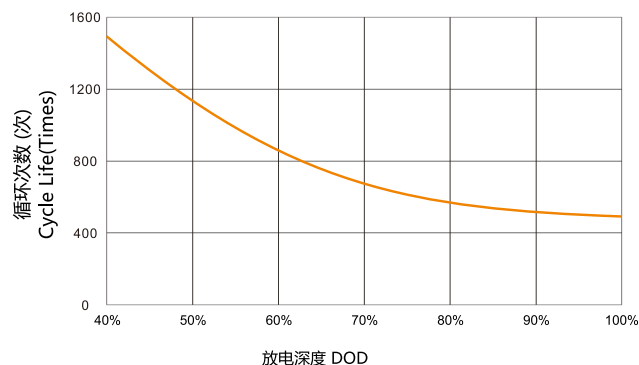
电池容量曲线 Capacity vs Temperature



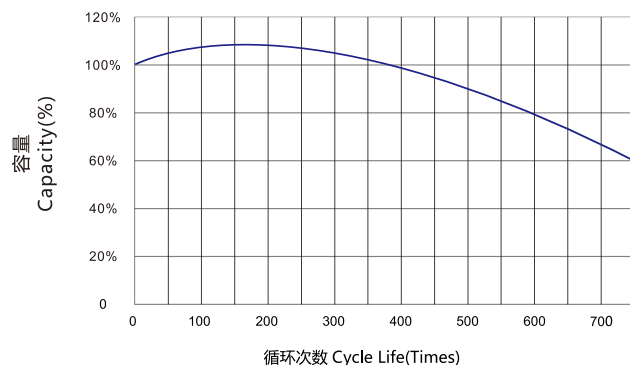
自放电曲线 Self-discharge vs Time



循环次数与放电深度 Cycle Life vs Depth of Discharge



循环次数与容量 Cycle Life vs Capacity@25°C(77°F)



充电电流 Charge Current

限流: ≤0.3CA
Limited current: ≤0.3CA

快速充电 Fast Charge

恒压 Constant voltage: 14.80V@25°C(77°F)
温度补偿系数 Temp. Coefficient: -30mV/°C

浮充充电 Float Charge

恒压 Constant voltage: 13.80V@25°C(77°F)
温度补偿系数 Temp. Coefficient: -18mV/°C