

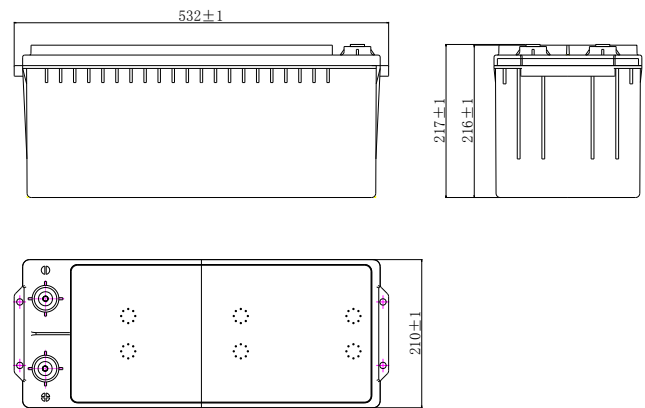
# OPZV12-150 (12V150Ah)

## Specifications

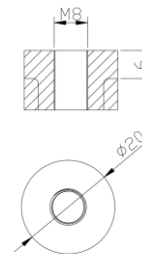
Nominal Voltage		12 V
Capacity (25°C)	20HR	161Ah
	10HR	150Ah
	5HR	137Ah
Dimension	Length	532±2mm (20.94inch)
	Width	210±2mm (8.27inch)
	Height	216±2mm (8.50inch)
	Total Height	217±2mm (8.54inch)
Approx. Weight		56.5kg (124.56lb)±4%
Terminal type		M8
Internal resistance (Fully charged, 25°C)		Approx. 6mΩ
Capacity affected by temperature (10HR)	40°C	102%
	25°C	100%
	0°C	85%
	-15°C	65%
Self-discharge (25°C)	3 month	Remaining Capacity: 91%
	6 month	Remaining Capacity: 82%
	12 month	Remaining Capacity: 65%
Nominal operating temperature		25°C±3°C(77°F±5°F)
Operating temperature range	Discharge	-40°C~60°C(-40°F~140°F)
	Charge	0°C~40°C(32°F~104°F)
	Storage	-20°C~40°C(-4°F~104°F)
Float charging voltage(25°C)		13.3 to 13.5V Temperature compensation: -18mV/°C
Cyclic charging voltage(25°C)		14.1 to 14.4V Temperature compensation: -30mV/°C
Maximum charging current		30A
Maximum discharge current		900A(5 sec.)
Designed floating life(20°C)		10~15years



## Dimensions



## Terminal



## Constant Current Discharge Characteristics (A, 25°C)

F.V/Time	30MIN	60MIN	2HR	3HR	4HR	5HR	6HR	7HR	8HR	10HR	20HR
1.90V/cell	113	80.3	48.6	36.5	29.3	24.7	21.1	18.1	16.0	14.1	7.22
1.85V/cell	129	90.2	53.4	38.3	30.2	26.3	22.8	19.3	17.0	14.8	7.73
1.80V/cell	143	95.3	57.0	40.7	31.9	26.7	23.1	20.0	18.0	15.0	8.06
1.75V/cell	150	97.4	58.5	41.3	32.7	27.2	23.6	20.7	18.5	15.3	8.25

## Constant Power Discharge Characteristics (Watt, 25°C)

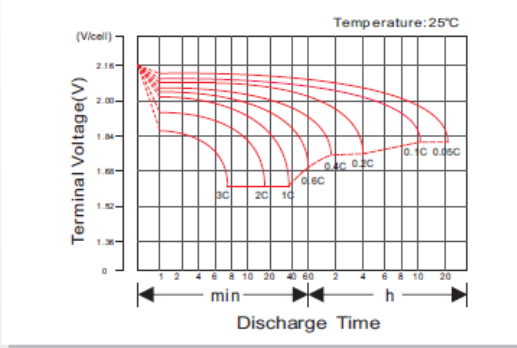
F.V/Time	30MIN	60MIN	2HR	3HR	4HR	5HR	6HR	7HR	8HR	10HR	20HR
1.90V/cell	1269	927	567.0	431.1	343.8	291.6	249.3	214.2	188.1	166.5	86.04
1.85V/cell	1494	1035	616.5	446.4	353.7	306.9	268.2	224.1	198.0	173.7	91.83
1.80V/cell	1629	1107	661.5	471.6	370.8	311.4	269.1	229.8	209.7	174.4	95.66
1.75V/cell	1710	1125	685.8	475.2	376.2	315.0	271.8	236.7	213.3	179.4	99.59

Note: The above characteristics data can be obtained within three charge/discharge cycles.

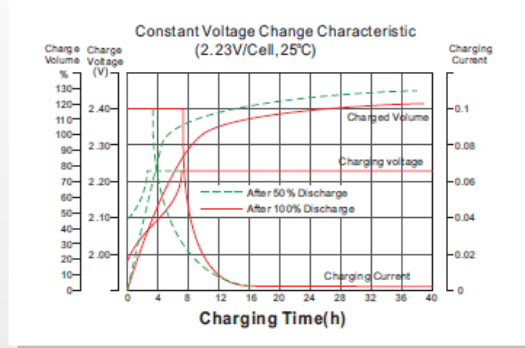
## Construction

Component	Positive plate	Negative plate	Container	Cover	Separator	Electrolyte	Safety valve	Terminal
Raw material	Lead dioxide	Lead	ABS	ABS	PE	GEL	Rubber	Copper

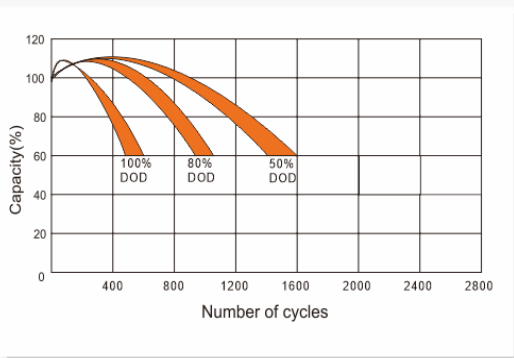
**Discharge Characteristics Curve**



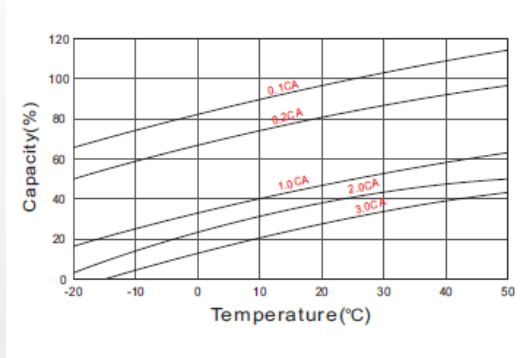
**Charging Characteristics Curve**



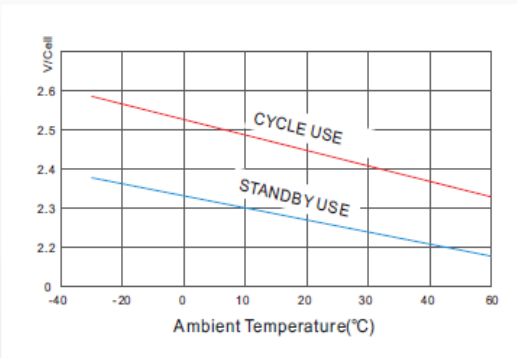
**Cycle life in relation to depth of Discharge**



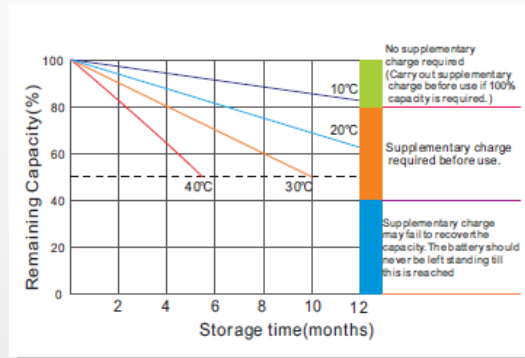
**Temperature effects on Capacity**



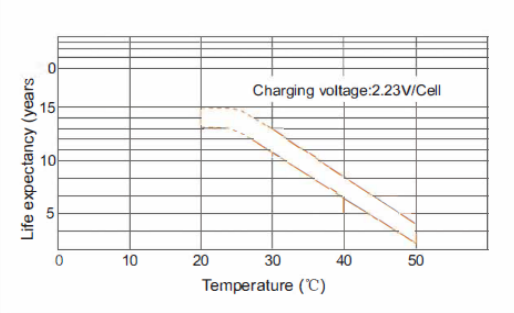
**Relationship between charging voltage and temperature**



**Self-discharge Characteristics**



**Temperature effects on Float life**



**Life Characteristics of Standby use**

