

Motive Battery

Energy Storage Battery

Reserve Battery

Motorcycle Battery



Industry Battery-General Purpose AGM Battery-TN Series

TN12-100A

(12V 100Ah)

GENERAL FEATURES

- ♦ Oxygen recombination technology: maintenance-free, no need to add water or acid
- ♦ The patent grid alloy: less gassing, low self-discharge, excellent corrosion resistance
- ♦ Design life is 7~9 years at 25°C under standby application, deep discharge recoverability
- ♦ High quality AGM separator: extend cycle life and prevent micro short circuit
- ♦ ABS container: increase the strength of battery (Flame-retardant ABS UL94-V0 is optional)

Dimension

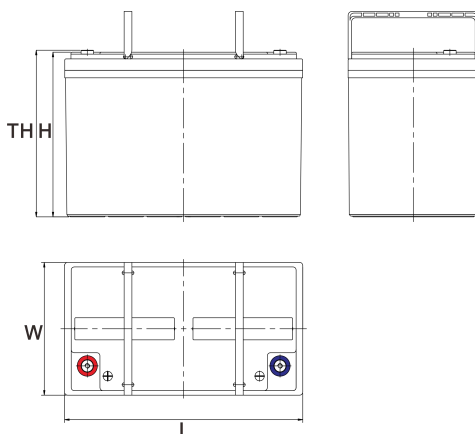
Unit:mm

Length 306±2mm / 12.05inch

Width 168±2mm / 6.61inch

Container Height 208±3mm / 8.19inch

Total Height 230±3mm / 9.06inch



Application

- ♦ Uninterrupted Power Supply (UPS)
- ♦ Communications and electric equipment
- ♦ Emergency lighting equipment
- ♦ Fire alarm and security system
- ♦ Robots, control equipment, and other factory automation equipment
- ♦ Emergency power supply (EPS)
- ♦ Portable VTR/TV, radio and so on
- ♦ Power tools, lawn mowers, vacuum cleaners
- ♦ Cameras and photographic equipment
- ♦ Portable measuring equipment
- ♦ Portable telephone sets
- ♦ Various power toys and hobby equipment
- ♦ Lighting equipment

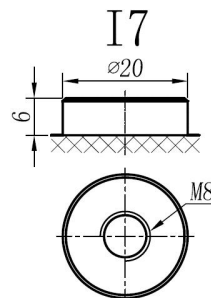
Terminal

Unit:mm

Terminal Type: I7

Weight

30.6kg 67.46lbs



This document is subject to change without prior notification

Motive Battery

Energy Storage Battery

Reserve Battery

Motorcycle Battery



TN12-100A

Specificaion

Nominal Voltage	12V	
Rated Capacity(25°C)	104Ah	20hr Rate(1.80V/cell)
	100Ah	10hr Rate(1.80V/cell)
	89Ah	5hr Rate(1.75V/cell)
	79Ah	3hr Rate(1.70V/cell)
	65Ah	1hr Rate(1.60V/cell)
Container Material	ABS (Flame-retardant ABS UL94-V0 is optional)	
Operating Temperature Range	Discharge	-20 ~ +50°C
	Charge	0 ~ +40°C
	Storage	-15 ~ +40°C
Capacity Effected by Temperature	40°C / 104°F	106%
	25°C / 77°F	100%
	0°C / 32°F	86%
	-10°C / 14°F	65%
Charge	Float Voltage	2.23 -2.27V/cell@25°C, Tem.Coefficient : -3mV/cell/°C
	Equalize Voltage	2.35 -2.40V/cell@25°C, Tem.Coefficient : -3mV/cell/°C
	Cycle Voltage	2.40 -2.50V/cell@25°C, Tem.Coefficient : -5mV/cell/°C
Max. Charging Current	30A (0.3C)	
Max. Discharge Current (5S)	1200A	
Internal Resistance	4.9mΩ	
Self-Discharge	<3%, TN series stored at 25 °C require a supplementary charge every six months, the charging interval would shrink when the ambient temperature went higher	

Discharge Performance

Constant Current Discharge Table (25°C/77°F) Unit: A

F.V/Time	5min	173.774	15min	20min	30min	45min	1h	2h	3h	4h	5h	6h	8h	10h	20h
1.85V/cell	173.8	146.5	130.3	115.4	87.6	66.2	53.19	31.77	23.85	19.49	16.65	14.54	11.72	9.660	5.135
1.80V/cell	210.2	167.8	143.8	123.6	92.2	69.7	55.93	33.60	24.97	20.50	17.46	15.15	12.12	10.010	5.205
1.75V/cell	237.2	186.5	154.2	130.9	96.6	72.4	57.96	34.92	25.78	21.01	17.86	15.45	12.32	10.110	5.295
1.70V/cell	261.9	199.7	165.3	139.0	101.9	75.7	60.39	35.83	26.39	21.52	18.17	15.76	12.52	10.210	5.345
1.67V/cell	292.0	215.3	178.7	146.7	106.8	78.6	62.83	36.84	27.10	22.03	18.57	16.06	12.73	10.310	5.405
1.60V/cell	331.1	232.7	188.7	154.5	112.4	81.7	64.76	38.06	28.01	22.53	18.88	16.36	12.83	10.511	5.455

Constant Power Discharge Table (25°C/77°F) Unit: W

F.V/Time	5min	10min	15min	20min	30min	45min	1h	2h	3h	4h	5h	6h	8h	10h	20h
1.85V/cell	322.8	275.2	247.3	220.7	168.7	126.5	102.30	60.86	45.75	37.54	32.23	28.23	22.92	19.119	10.210
1.80V/cell	386.8	312.5	271.3	235.3	177.0	132.8	107.31	63.86	47.75	39.24	33.63	29.43	23.72	19.820	10.310
1.75V/cell	431.7	345.2	289.0	248.0	184.5	137.4	110.91	66.07	49.15	40.14	34.33	29.93	24.02	19.920	10.410
1.70V/cell	471.4	366.9	308.0	262.1	193.8	143.1	115.12	67.67	50.15	41.04	34.83	30.43	24.32	20.120	10.511
1.67V/cell	519.8	391.8	330.5	274.8	202.1	147.8	119.22	69.27	51.35	41.84	35.34	30.83	24.62	20.320	10.611
1.60V/cell	579.5	418.6	345.4	286.9	211.3	153.1	122.52	71.17	52.75	42.64	35.94	31.33	24.82	20.521	10.711

动力电池

储能电池

备用电池

摩托车电池



阀控式免维护铅酸蓄电池-通用型

TN12-100A

(12V 100Ah)

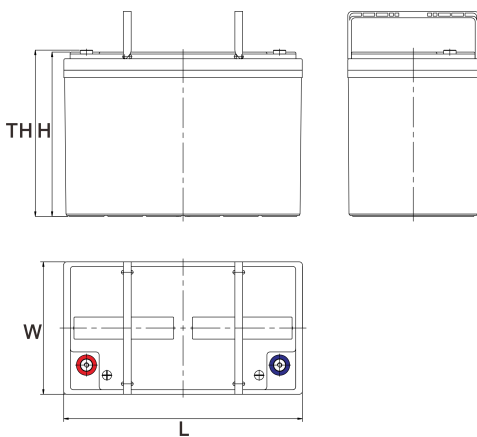
产品特点

- ◆ 阀控式免维护设计，寿命期间无需加水或加酸
- ◆ 专利稀土合金板栅，减少气体产生，自放电率低，抗腐蚀能力出众
- ◆ 在25°C下，产品浮充设计寿命为7~9年，优良的深放电恢复能力
- ◆ 高质量AGM隔板：防止微短路，延长循环寿命
- ◆ ABS壳盖：电池外壳强度高（阻燃壳体UL94-V0可选）

尺寸

单个尺寸

长	306±2mm
宽	168±2mm
高	208±3mm
总高	230±3mm



产品应用

- ◆ 不间断电源(UPS)
- ◆ 通信和电力设备
- ◆ 紧急照明设备
- ◆ 火灾报警及安防系统
- ◆ 机器人、控制设备及其他机械自动化设备
- ◆ 应急电源系统
- ◆ 便携式音频设备
- ◆ 电动工具，割草机，真空吸尘器
- ◆ 照相设备
- ◆ 便携式测量工具
- ◆ 便携式通话设备
- ◆ 各式电动玩具及娱乐设施
- ◆ 照明设备

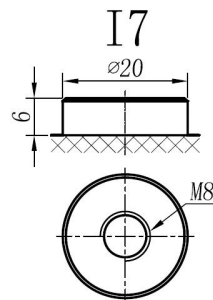
端子类型

单位:mm

端子类型 I7

重量

30.6kg 67.46lbs



内容如有改动，恕不另行通知



ISO9001 ISO14001 OHSAS18001

动力电池

储能电池

备用电池

摩托车电池



TN12-100A

规格书

额定电压	12V	
容量(25°C)	104Ah	20hr Rate(1.80V/cell)
	100Ah	10hr Rate(1.80V/cell)
	89Ah	5hr Rate(1.75V/cell)
	79Ah	3hr Rate(1.70V/cell)
	65Ah	1hr Rate(1.60V/cell)
壳体材料	ABS (阻燃ABS壳体可选)	
使用温度范围	放电	-20 ~ +50°C
	充电	0 ~ +40°C
	储存	-15 ~ +40°C
不同温度下 电池容量系数	40°C / 104°F	106%
	25°C / 77°F	100%
	0°C / 32°F	86%
	-10°C / 14°F	65%
充电	浮充电压	2.23 - 2.27V/单格@25°C, 温度补偿系数: -3mV/单格/°C
	均充电压	2.35 - 2.40V/单格@25°C, 温度补偿系数: -3mV/单格/°C
	循环使用电压	2.40 - 2.50V/单格@25°C, 温度补偿系数: -5mV/单格/°C
最大充电电流	30A (0.3C)	
最大放电电流 (5S)	1200A	
电阻	4.9mΩ	
自放电	<3%, TN系列储存在25°C时需每6个月进行一次补充充电, 环境温度更高时则充电间隔时间越短	

放电性能

恒电流放电表 (25°C/77°F) 单位: A															
F.V/Time	5min	10min	15min	20min	30min	45min	1h	2h	3h	4h	5h	6h	8h	10h	20h
1.85V/cell	173.8	146.5	130.3	115.4	87.6	66.2	53.19	31.77	23.85	19.49	16.65	14.54	11.72	9.660	5.135
1.80V/cell	210.2	167.8	143.8	123.6	92.2	69.7	55.93	33.60	24.97	20.50	17.46	15.15	12.12	10.010	5.205
1.75V/cell	237.2	186.5	154.2	130.9	96.6	72.4	57.96	34.92	25.78	21.01	17.86	15.45	12.32	10.110	5.295
1.70V/cell	261.9	199.7	165.3	139.0	101.9	75.7	60.39	35.83	26.39	21.52	18.17	15.76	12.52	10.210	5.345
1.67V/cell	292.0	215.3	178.7	146.7	106.8	78.6	62.83	36.84	27.10	22.03	18.57	16.06	12.73	10.310	5.405
1.60V/cell	331.1	232.7	188.7	154.5	112.4	81.7	64.76	38.06	28.01	22.53	18.88	16.36	12.83	10.511	5.455

恒功率放电表 (25°C/77°F) 单位: W															
F.V/Time	5min	10min	15min	20min	30min	45min	1h	2h	3h	4h	5h	6h	8h	10h	20h
1.85V/cell	322.8	275.2	247.3	220.7	168.7	126.5	102.30	60.86	45.75	37.54	32.23	28.23	22.92	19.119	10.210
1.80V/cell	386.8	312.5	271.3	235.3	177.0	132.8	107.31	63.86	47.75	39.24	33.63	29.43	23.72	19.820	10.310
1.75V/cell	431.7	345.2	289.0	248.0	184.5	137.4	110.91	66.07	49.15	40.14	34.33	29.93	24.02	19.920	10.410
1.70V/cell	471.4	366.9	308.0	262.1	193.8	143.1	115.12	67.67	50.15	41.04	34.83	30.43	24.32	20.120	10.511
1.67V/cell	519.8	391.8	330.5	274.8	202.1	147.8	119.22	69.27	51.35	41.84	35.34	30.83	24.62	20.320	10.611
1.60V/cell	579.5	418.6	345.4	286.9	211.3	153.1	122.52	71.17	52.75	42.64	35.94	31.33	24.82	20.521	10.711