

Motive Battery

Energy Storage Battery

Reserve Battery

Motorcycle Battery



Industry Battery-General Purpose AGM Battery-TN Series

TN12-100C

(12V 100Ah)

GENERAL FEATURES

- Oxygen recombination technology: maintenance-free, no need to add water or acid
- The patent grid alloy: less gassing, low self-discharge, excellent corrosion resistance
- Design life is 7~9 years at 25°C under standby application, deep discharge recoverability
- High quality AGM separator: extend cycle life and prevent micro short circuit
- ABS container: increase the strength of battery (Flame-retardant ABS UL94-V0 is optional)

Dimension

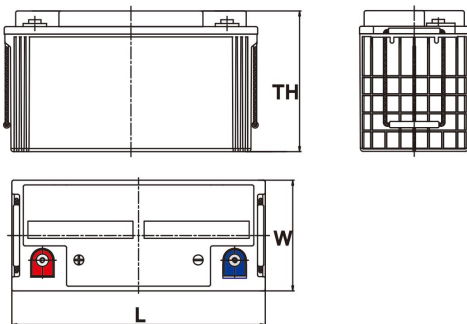
Unit:mm

Length 407±2mm / 16.02inch

Width 177±2mm / 6.97inch

Container Height 225±3mm / 8.86inch

Total Height 225±3mm / 8.86inch



Application

- Uninterrupted Power Supply (UPS)
- Communications and electric equipment
- Emergency lighting equipment
- Fire alarm and security system
- Robots, control equipment, and other factory automation equipment
- Emergency power supply (EPS)
- Portable VTR/TV, radio and so on
- Power tools, lawn mowers, vacuum cleaners
- Cameras and photographic equipment
- Portable measuring equipment
- Portable telephone sets
- Various power toys and hobby equipment
- Lighting equipment

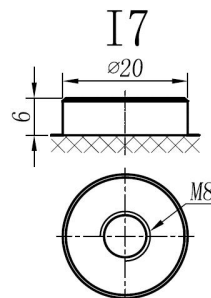
Terminal

Unit:mm

Terminal Type: I7

Weight

31.9kg 70.33lbs



This document is subject to change without prior notification

Motive Battery

Energy Storage Battery

Reserve Battery

Motorcycle Battery



TN12-100C

Specificaion

Nominal Voltage	12V	
Rated Capacity(25°C)	104Ah	20hr Rate(1.80V/cell)
	100Ah	10hr Rate(1.80V/cell)
	90Ah	5hr Rate(1.75V/cell)
	80Ah	3hr Rate(1.70V/cell)
	65Ah	1hr Rate(1.60V/cell)
Container Material	ABS (Flame-retardant ABS UL94-V0 is optional)	
Operating Temperature Range	Discharge	-20 ~ +50°C
	Charge	0 ~ +40°C
	Storage	-15 ~ +40°C
Capacity Effected by Temperature	40°C / 104°F	106%
	25°C / 77°F	100%
	0°C / 32°F	86%
	-10°C / 14°F	65%
Charge	Float Voltage	2.23 -2.27V/cell@25°C, Tem.Coefficient : -3mV/cell/°C
	Equalize Voltage	2.35 -2.40V/cell@25°C, Tem.Coefficient : -3mV/cell/°C
	Cycle Voltage	2.40 -2.50V/cell@25°C, Tem.Coefficient : -5mV/cell/°C
Max. Charging Current	30A (0.3C)	
Max. Discharge Current (5S)	1200A	
Internal Resistance	4.9mΩ	
Self-Discharge	<3%, TN series stored at 25 °C require a supplementary charge every six months, the charging interval would shrink when the ambient temperature went higher	

Discharge Performance

Constant Current Discharge Table (25°C/77°F) Unit: A

F.V/Time	5min	10min	15min	20min	30min	45min	1h	2h	3h	4h	5h	6h	8h	10h	20h
1.85V/cell	175.3	147.9	131.5	116.5	88.4	66.8	53.66	32.06	24.07	19.66	16.80	14.67	11.82	9.747	5.181
1.80V/cell	212.1	169.3	145.1	124.7	93.0	70.4	56.43	33.90	25.19	20.69	17.62	15.29	12.23	10.010	5.205
1.75V/cell	239.4	188.2	155.5	132.1	97.5	73.0	58.48	35.23	26.01	21.20	18.02	15.59	12.43	10.201	5.343
1.70V/cell	264.2	201.5	166.8	140.3	102.8	76.4	60.94	36.15	26.63	21.71	18.33	15.90	12.64	10.302	5.393
1.67V/cell	294.6	217.3	180.3	148.1	107.8	79.3	63.39	37.18	27.34	22.22	18.74	16.20	12.84	10.403	5.454
1.60V/cell	334.1	234.8	190.4	155.8	113.4	82.4	65.34	38.41	28.27	22.74	19.05	16.51	12.94	10.605	5.505

Constant Power Discharge Table (25°C/77°F) Unit: W

F.V/Time	5min	10min	15min	20min	30min	45min	1h	2h	3h	4h	5h	6h	8h	10h	20h
1.85V/cell	325.7	277.7	249.6	222.7	170.2	127.7	103.22	61.41	46.16	37.88	32.52	28.48	23.13	19.291	10.302
1.80V/cell	390.3	315.3	273.7	237.5	178.6	134.0	108.27	64.44	48.18	39.59	33.94	29.69	23.94	19.998	10.403
1.75V/cell	435.6	348.4	291.6	250.3	186.1	138.7	111.91	66.66	49.59	40.50	34.64	30.20	24.24	20.099	10.504
1.70V/cell	475.6	370.2	310.8	264.4	195.5	144.4	116.15	68.28	50.60	41.41	35.15	30.70	24.54	20.301	10.605
1.67V/cell	524.5	395.3	333.5	277.2	203.9	149.2	120.29	69.89	51.81	42.22	35.65	31.11	24.85	20.503	10.706
1.60V/cell	584.7	422.4	348.6	289.5	213.2	154.4	123.63	71.81	53.23	43.03	36.26	31.61	25.05	20.705	10.807

□ 动力电池

■ 储能电池

■ 备用电池

□ 摩托车电池



阀控式免维护铅酸蓄电池-通用型

TN12-100C

(12V 100Ah)

产品特点

- ◆ 阀控式免维护设计，寿命期间无需加水或加酸
- ◆ 专利稀土合金板栅，减少气体产生，自放电率低，抗腐蚀能力出众
- ◆ 在25°C下，产品浮充设计寿命为7~9年，优良的深放电恢复能力
- ◆ 高质量AGM隔板：防止微短路，延长循环寿命
- ◆ ABS壳盖：电池外壳强度高（阻燃壳体UL94-V0可选）



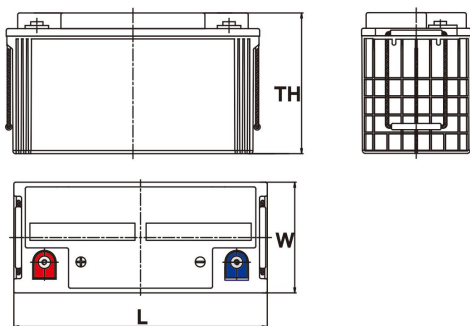
产品应用

- ◆ 不间断电源(UPS)
- ◆ 通信和电力设备
- ◆ 紧急照明设备
- ◆ 火灾报警及安防系统
- ◆ 机器人、控制设备及其他机械自动化设备
- ◆ 应急电源系统
- ◆ 便携式音频设备
- ◆ 电动工具，割草机，真空吸尘器
- ◆ 照相设备
- ◆ 便携式测量工具
- ◆ 便携式通话设备
- ◆ 各式电动玩具及娱乐设施
- ◆ 照明设备

尺寸

单个尺寸

长	407±2mm
宽	177±2mm
高	225±3mm
总高	225±3mm



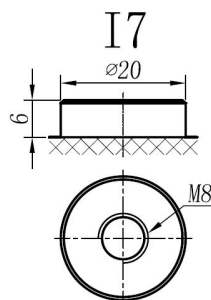
端子类型

单位:mm

端子类型 I7

重量

31.9kg 70.33lbs



内容如有改动，恕不另行通知



ISO9001 ISO14001 OHSAS18001

天能电池集团有限公司

长兴天能进出口有限公司

www.tiannenggroup.com

版本: V1.0

发行日期: 2016/7/1

©2016 天能集团 版权所有，保留一切权利；商标所有权属于天能集团及其附属机构

浙江省长兴画溪工业区包桥路18号天能集团 邮编: 313199

动力电池

储能电池

备用电池

摩托车电池



TN12-100C

规格书

额定电压	12V	
容量(25°C)	104Ah	20hr Rate(1.80V/cell)
	100Ah	10hr Rate(1.80V/cell)
	90Ah	5hr Rate(1.75V/cell)
	80Ah	3hr Rate(1.70V/cell)
	65Ah	1hr Rate(1.60V/cell)
壳体材料	ABS (阻燃ABS壳体可选)	
使用温度范围	放电	-20 ~ +50°C
	充电	0 ~ +40°C
	储存	-15 ~ +40°C
不同温度下 电池容量系数	40°C / 104°F	106%
	25°C / 77°F	100%
	0°C / 32°F	86%
	-10°C / 14°F	65%
充电	浮充电压	2.23 -2.27V/单格@25°C, 温度补偿系数: -3mV/单格/°C
	均充电压	2.35 -2.40V/单格@25°C, 温度补偿系数: -3mV/单格/°C
	循环使用电压	2.40 -2.50V/单格@25°C, 温度补偿系数: -5mV/单格/°C
最大充电电流	30A (0.3C)	
最大放电电流 (5S)	1200A	
电阻	4.9mΩ	
自放电	<3%, TN系列储存在25°C 时需每6个月进行一次补充充电, 环境温度更高时则充电间隔时间越短	

放电性能

恒电流放电表 (25°C/77°F) 单位: A															
F.V/Time	5min	10min	15min	20min	30min	45min	1h	2h	3h	4h	5h	6h	8h	10h	20h
1.85V/cell	175.3	147.9	131.5	116.5	88.4	66.8	53.66	32.06	24.07	19.66	16.80	14.67	11.82	9.747	5.181
1.80V/cell	212.1	169.3	145.1	124.7	93.0	70.4	56.43	33.90	25.19	20.69	17.62	15.29	12.23	10.010	5.205
1.75V/cell	239.4	188.2	155.5	132.1	97.5	73.0	58.48	35.23	26.01	21.20	18.02	15.59	12.43	10.201	5.343
1.70V/cell	264.2	201.5	166.8	140.3	102.8	76.4	60.94	36.15	26.63	21.71	18.33	15.90	12.64	10.302	5.393
1.67V/cell	294.6	217.3	180.3	148.1	107.8	79.3	63.39	37.18	27.34	22.22	18.74	16.20	12.84	10.403	5.454
1.60V/cell	334.1	234.8	190.4	155.8	113.4	82.4	65.34	38.41	28.27	22.74	19.05	16.51	12.94	10.605	5.505

恒功率放电表 (25°C/77°F) 单位: W															
F.V/Time	5min	10min	15min	20min	30min	45min	1h	2h	3h	4h	5h	6h	8h	10h	20h
1.85V/cell	325.7	277.7	249.6	222.7	170.2	127.7	103.22	61.41	46.16	37.88	32.52	28.48	23.13	19.291	10.302
1.80V/cell	390.3	315.3	273.7	237.5	178.6	134.0	108.27	64.44	48.18	39.59	33.94	29.69	23.94	19.998	10.403
1.75V/cell	435.6	348.4	291.6	250.3	186.1	138.7	111.91	66.66	49.59	40.50	34.64	30.20	24.24	20.099	10.504
1.70V/cell	475.6	370.2	310.8	264.4	195.5	144.4	116.15	68.28	50.60	41.41	35.15	30.70	24.54	20.301	10.605
1.67V/cell	524.5	395.3	333.5	277.2	203.9	149.2	120.29	69.89	51.81	42.22	35.65	31.11	24.85	20.503	10.706
1.60V/cell	584.7	422.4	348.6	289.5	213.2	154.4	123.63	71.81	53.23	43.03	36.26	31.61	25.05	20.705	10.807