

Motive Battery

Energy Storage Battery

Reserve Battery

Motorcycle Battery



Industry Battery-General Purpose AGM Battery-TN Series

TN12-120

(12V 120Ah)

GENERAL FEATURES

- ◆ Oxygen recombination technology: maintenance-free, no need to add water or acid
- ◆ The patent grid alloy: less gassing, low self-discharge, excellent corrosion resistance
- ◆ Design life is 7~9 years at 25°C under standby application, deep discharge recoverability
- ◆ High quality AGM separator: extend cycle life and prevent micro short circuit
- ◆ ABS container: increase the strength of battery (Flame-retardant ABS UL94-V0 is optional)

Dimension

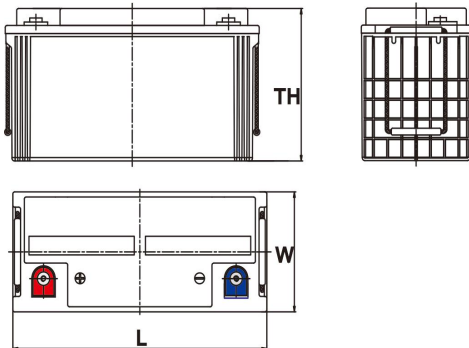
Unit:mm

Length 408±2mm / 16.06inch

Width 177±2mm / 6.97inch

Container Height 224±3mm / 8.82inch

Total Height 224±3mm / 8.82inch



Application

- ◆ Uninterrupted Power Supply (UPS)
- ◆ Communications and electric equipment
- ◆ Emergency lighting equipment
- ◆ Fire alarm and security system
- ◆ Control equipment, and other factory automation equipment
- ◆ Emergency power supply (EPS)
- ◆ Portable VTR/TV, radio and so on
- ◆ Power tools, lawn mowers, vacuum cleaners
- ◆ Cameras and photographic equipment
- ◆ Portable measuring equipment
- ◆ Portable telephone sets
- ◆ Various power toys and hobby equipment
- ◆ Lighting equipment

Terminal

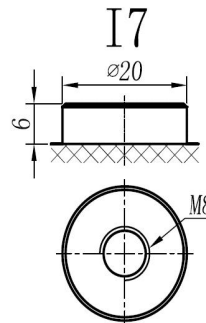
Unit:mm

Terminal Type: I7

Weight

34kg

74.96lbs



ISO9001 ISO14001 OHSAS18001

This document is subject to change without prior notification

Motive Battery

Energy Storage Battery

Reserve Battery

Motorcycle Battery



TN12-120

Specificaion

Nominal Voltage	12V	
Rated Capacity(25°C)	125Ah	20hr Rate (1.80V/cell)
	120Ah	10hr Rate (1.80V/cell)
	105Ah	5hr Rate (1.75V/cell)
	98Ah	3hr Rate (1.70V/cell)
	74Ah	1hr Rate (1.60V/cell)
Container Material	ABS (Flame-retardant ABS UL94-V0 is optional)	
Operating Temperature Range	Discharge	-20 ~ +50°C
	Charge	0 ~ +40°C
	Storage	-15 ~ +40°C
Capacity Effected by Temperature	40°C / 104°F	106%
	25°C / 77°F	100%
	0°C / 32°F	86%
	-10°C / 14°F	65%
Charge	Float Voltage	2.23 -2.27V/cell@25°C, Tem.Coefficient : -3mV/cell/°C
	Equalize Voltage	2.35 -2.40V/cell@25°C, Tem.Coefficient : -3mV/cell/°C
	Cycle Voltage	2.40 -2.50V/cell@25°C, Tem.Coefficient : -5mV/cell°C
Max. Charging Current	36A (0.3C)	
Max. Discharge Current (5S)	1300A	
Internal Resistance	4mΩ	
Self-Discharge	<3%, TN series stored at 25 °C require a supplementary charge every six months, the charging interval would shrink when the ambient temperature went higher	

Discharge Performance

Constant Current Discharge Table (25°C/77°F) Unit: A															
F.V/Time	5min	10min	15min	20min	30min	45min	1h	2h	3h	4h	5h	6h	8h	10h	20h
1.85V/cell	205.6	161.7	137.4	115.0	91.4	70.1	57.45	36.54	28.93	23.65	19.08	16.46	13.43	11.311	6.186
1.80V/cell	276.0	206.5	166.1	135.9	107.8	81.6	64.35	39.89	31.16	25.17	20.40	17.68	14.24	12.012	6.246
1.75V/cell	311.1	226.9	181.4	146.2	111.9	84.7	67.29	41.41	31.67	25.78	20.91	18.18	14.44	12.112	6.306
1.70V/cell	342.6	247.3	193.7	153.7	116.5	88.0	69.43	43.04	32.58	26.49	21.52	18.58	14.65	12.212	6.426
1.67V/cell	377.8	267.0	205.9	163.3	122.9	90.2	71.76	44.25	34.00	27.41	22.13	18.99	14.85	12.513	6.507
1.60V/cell	416.7	289.8	220.2	173.9	129.7	94.0	74.30	45.78	35.02	28.22	22.84	19.39	15.05	12.613	6.547

Constant Power Discharge Table (25°C/77°F) Unit: W															
F.V/Time	5min	10min	15min	20min	30min	45min	1h	2h	3h	4h	5h	6h	8h	10h	20h
1.85V/cell	375.9	298.6	256.5	216.7	174.2	132.9	109.21	70.07	55.56	45.55	36.84	32.13	26.23	22.422	12.212
1.80V/cell	499.2	377.0	305.7	252.5	202.4	153.4	121.72	75.98	59.46	48.35	39.34	34.33	27.73	23.724	12.312
1.75V/cell	550.9	407.6	329.8	269.0	208.3	157.7	126.73	78.48	60.36	49.25	40.24	35.14	28.13	23.924	12.412
1.70V/cell	589.8	434.2	347.2	280.5	215.6	163.4	130.33	81.38	61.96	50.45	41.14	35.84	28.53	24.124	12.713
1.67V/cell	641.1	464.3	366.4	295.8	225.6	166.0	133.73	83.18	64.26	52.05	42.14	36.54	28.83	24.625	12.813
1.60V/cell	690.8	492.6	385.4	311.6	236.5	172.0	137.74	85.59	65.97	53.45	43.44	37.24	29.13	24.825	12.913

动力电池

储能电池

备用电池

摩托车电池



阀控式免维护铅酸蓄电池 - 通用型

TN12-120

(12V 120Ah)

产品特点

- ◆ 阀控式免维护设计，寿命期间无需加水或加酸
- ◆ 专利稀土合金板栅，减少气体产生，自放电率低，抗腐蚀能力出众
- ◆ 在25°C下，产品浮充设计寿命为7~9年，优良的深放电恢复能力
- ◆ 高质量AGM隔板：防止微短路，延长循环寿命
- ◆ ABS壳盖：电池外壳强度高（阻燃壳体UL94-V0可选）



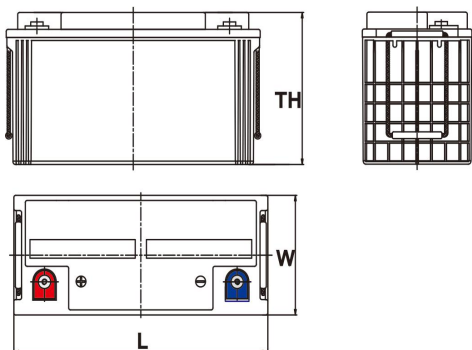
产品应用

- ◆ 不间断电源(UPS)
- ◆ 通信和电力设备
- ◆ 紧急照明设备
- ◆ 火灾报警及安防系统
- ◆ 控制设备及其他机械自动化设备
- ◆ 应急电源系统
- ◆ 便携式音频设备
- ◆ 电动工具，割草机，真空吸尘器
- ◆ 照相设备
- ◆ 便携式测量工具
- ◆ 便携式通话设备
- ◆ 各式电动玩具及娱乐设施
- ◆ 照明设备

尺寸

单个尺寸

长	408±2mm
宽	177±2mm
高	224±3mm
总高	224±3mm



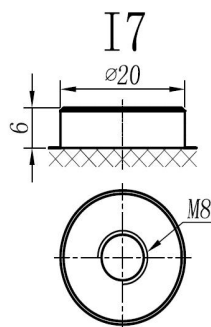
端子类型

单位:mm

端子类型 I7

重量

34kg 74.96lbs



内容如有改动，恕不另行通知



ISO9001 ISO14001 OHSAS18001

动力电池

储能电池

备用电池

摩托车电池



TN12-120

规格书

额定电压	12V	
容量(25°C)	125Ah	20hr Rate (1.80V/cell)
	120Ah	10hr Rate (1.80V/cell)
	105Ah	5hr Rate (1.75V/cell)
	98Ah	3hr Rate (1.70V/cell)
	74Ah	1hr Rate (1.60V/cell)
壳体材料	ABS (阻燃ABS壳体可选)	
使用温度范围	放电	-20 ~ +50°C
	充电	0 ~ +40°C
	储存	-15 ~ +40°C
不同温度下 电池容量系数	40°C / 104°F	106%
	25°C / 77°F	100%
	0°C / 32°F	86%
	-10°C / 14°F	65%
充电	浮充电压	2.23 -2.27V/单格@25°C, 温度补偿系数: -3mV/单格/°C
	均充电压	2.35 -2.40V/单格@25°C, 温度补偿系数: -3mV/单格/°C
	循环使用电压	2.40 -2.50V/单格@25°C, 温度补偿系数: -5mV/单格/°C
最大充电电流	36A (0.3C)	
最大放电电流 (5S)	1300A	
电阻	4mΩ	
自放电	<3%, TN系列储存在25°C 时需每6个月进行一次补充充电, 环境温度更高时则充电间隔时间越短	

放电性能

恒电流放电表 (25°C/77°F) 单位: A															
F.V/Time	5min	10min	15min	20min	30min	45min	1h	2h	3h	4h	5h	6h	8h	10h	20h
1.85V/cell	205.6	161.7	137.4	115.0	91.4	70.1	57.45	36.54	28.93	23.65	19.08	16.46	13.43	11.311	6.186
1.80V/cell	276.0	206.5	166.1	135.9	107.8	81.6	64.35	39.89	31.16	25.17	20.40	17.68	14.24	12.012	6.246
1.75V/cell	311.1	226.9	181.4	146.2	111.9	84.7	67.29	41.41	31.67	25.78	20.91	18.18	14.44	12.112	6.306
1.70V/cell	342.6	247.3	193.7	153.7	116.5	88.0	69.43	43.04	32.58	26.49	21.52	18.58	14.65	12.212	6.426
1.67V/cell	377.8	267.0	205.9	163.3	122.9	90.2	71.76	44.25	34.00	27.41	22.13	18.99	14.85	12.513	6.507
1.60V/cell	416.7	289.8	220.2	173.9	129.7	94.0	74.30	45.78	35.02	28.22	22.84	19.39	15.05	12.613	6.547

恒功率放电表 (25°C/77°F) 单位: W															
F.V/Time	5min	10min	15min	20min	30min	45min	1h	2h	3h	4h	5h	6h	8h	10h	20h
1.85V/cell	375.9	298.6	256.5	216.7	174.2	132.9	109.21	70.07	55.56	45.55	36.84	32.13	26.23	22.422	12.212
1.80V/cell	499.2	377.0	305.7	252.5	202.4	153.4	121.72	75.98	59.46	48.35	39.34	34.33	27.73	23.724	12.312
1.75V/cell	550.9	407.6	329.8	269.0	208.3	157.7	126.73	78.48	60.36	49.25	40.24	35.14	28.13	23.924	12.412
1.70V/cell	589.8	434.2	347.2	280.5	215.6	163.4	130.33	81.38	61.96	50.45	41.14	35.84	28.53	24.124	12.713
1.67V/cell	641.1	464.3	366.4	295.8	225.6	166.0	133.73	83.18	64.26	52.05	42.14	36.54	28.83	24.625	12.813
1.60V/cell	690.8	492.6	385.4	311.6	236.5	172.0	137.74	85.59	65.97	53.45	43.44	37.24	29.13	24.825	12.913