

Motive Battery

Energy Storage Battery

Reserve Battery

Motorcycle Battery



Industry Battery-General Purpose AGM Battery-TN Series

TN12-120E

(12V 120Ah)

GENERAL FEATURES

- ◆ Oxygen recombination technology: maintenance-free, no need to add water or acid
- ◆ The patent grid alloy: less gassing, low self-discharge, excellent corrosion resistance
- ◆ Design life is 7~9 years at 25°C under standby application, deep discharge recoverability
- ◆ High quality AGM separator: extend cycle life and prevent micro short circuit
- ◆ ABS container: increase the strength of battery (Flame-retardant ABS UL94-V0 is optional)

Dimension

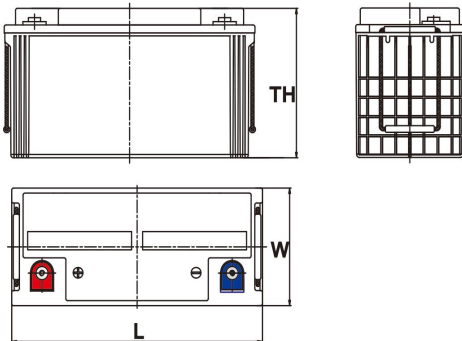
Unit:mm

Length 408±2mm / 16.06inch

Width 177±2mm / 6.97inch

Container Height 224±3mm / 8.82inch

Total Height 224±3mm / 8.82inch



Application

- ◆ Uninterrupted Power Supply (UPS)
- ◆ Communications and electric equipment
- ◆ Emergency lighting equipment
- ◆ Fire alarm and security system
- ◆ Control equipment, and other factory automation equipment
- ◆ Emergency power supply (EPS)
- ◆ Portable VTR/TV, radio and so on
- ◆ Power tools, lawn mowers, vacuum cleaners
- ◆ Cameras and photographic equipment
- ◆ Portable measuring equipment
- ◆ Portable telephone sets
- ◆ Various power toys and hobby equipment
- ◆ Lighting equipment

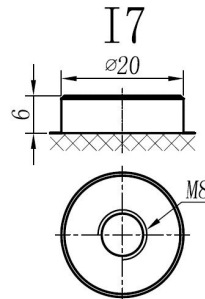
Terminal

Unit:mm

Terminal Type: I7

Weight

31.7kg 70.09lbs



ISO9001 ISO14001 OHSAS18001

This document is subject to change without prior notification

- Motive Battery
- Energy Storage Battery
- Reserve Battery
- Motorcycle Battery



TN12-120E

Specificaion

Nominal Voltage	12V	
Rated Capacity(25°C)	115Ah	20hr Rate (1.80V/cell)
	109Ah	10hr Rate (1.80V/cell)
	97Ah	5hr Rate (1.75V/cell)
	88Ah	3hr Rate (1.70V/cell)
	70Ah	1hr Rate (1.60V/cell)
Container Material	ABS (Flame-retardant ABS UL94-V0 is optional)	
Operating Temperature Range	Discharge	-20 ~ +50°C
	Charge	0 ~ +40°C
	Storage	-15 ~ +40°C
Capacity Effected by Temperature	40°C / 104°F	106%
	25°C / 77°F	100%
	0°C / 32°F	86%
	-10°C / 14°F	65%
Charge	Float Voltage	2.23 -2.27V/cell@25°C, Tem.Coefficient : -3mV/cell/°C
	Equalize Voltage	2.35 -2.40V/cell@25°C, Tem.Coefficient : -3mV/cell/°C
	Cycle Voltage	2.40 -2.50V/cell@25°C, Tem.Coefficient : -5mV/cell/°C
Max. Charging Current	34.5A (0.3C)	
Max. Discharge Current (5S)	1250A	
Internal Resistance	4.5mΩ	
Self-Discharge	<3%, TN series stored at 25 °C require a supplementary charge every six months, the charging interval would shrink when the ambient temperature went higher	

Discharge Performance

Constant Current Discharge Table (25°C/77°F) Unit: A															
F.V/Time	5min	10min	15min	20min	30min	45min	1h	2h	3h	4h	5h	6h	8h	10h	20h
1.85V/cell	189.7	154.1	133.9	115.2	89.5	68.2	55.32	34.15	26.39	21.57	17.86	15.50	12.57	10.485	5.661
1.80V/cell	243.1	187.1	155.0	129.8	100.0	75.7	60.14	36.74	28.06	22.84	18.93	16.41	13.18	10.890	5.726
1.75V/cell	274.2	206.7	167.8	138.6	104.3	78.5	62.63	38.16	28.72	23.40	19.39	16.82	13.38	11.111	5.801
1.70V/cell	302.3	223.5	179.5	146.3	109.2	81.9	64.91	39.43	29.49	24.00	19.84	17.17	13.58	11.211	5.886
1.67V/cell	334.9	241.1	192.3	155.0	114.9	84.4	67.29	40.55	30.55	24.72	20.35	17.52	13.79	11.411	5.956
1.60V/cell	373.9	261.3	204.5	164.2	121.1	87.8	69.53	41.92	31.52	25.38	20.86	17.88	13.94	11.562	6.001

Constant Power Discharge Table (25°C/77°F) Unit: W															
F.V/Time	5min	10min	15min	20min	30min	45min	1h	2h	3h	4h	5h	6h	8h	10h	20h
1.85V/cell	349.3	286.7	246.2	208.0	167.2	127.6	104.84	67.27	53.33	43.72	35.36	30.85	25.18	21.526	11.724
1.80V/cell	479.2	361.9	293.5	242.4	194.3	147.2	116.85	72.94	57.08	46.41	37.77	32.96	26.62	22.775	11.820
1.75V/cell	528.8	391.3	316.6	258.2	200.0	151.4	121.66	75.34	57.95	47.28	38.63	33.73	27.00	22.967	11.916
1.70V/cell	566.2	416.9	333.4	269.3	207.0	156.8	125.12	78.13	59.48	48.43	39.50	34.40	27.39	23.159	12.204
1.67V/cell	615.5	445.7	351.7	284.0	216.6	159.3	128.38	79.86	61.69	49.97	40.46	35.08	27.68	23.640	12.300
1.60V/cell	663.2	472.9	370.0	299.1	227.1	165.1	132.23	82.16	63.33	51.32	41.71	35.75	27.96	23.832	12.396

☐ 动力电池

■ 储能电池

■ 备用电池

☐ 摩托车电池



阀控式免维护铅酸蓄电池-通用型

TN12-120E

(12V 120Ah)

产品特点

- ◆ 阀控式免维护设计，寿命期间无需加水或加酸
- ◆ 专利稀土合金板栅，减少气体产生，自放电率低，抗腐蚀能力出众
- ◆ 在25°C下，产品浮充设计寿命为7~9年，优良的深放电恢复能力
- ◆ 高质量AGM隔板：防止微短路，延长循环寿命
- ◆ ABS壳盖：电池外壳强度高（阻燃壳体UL94-V0可选）



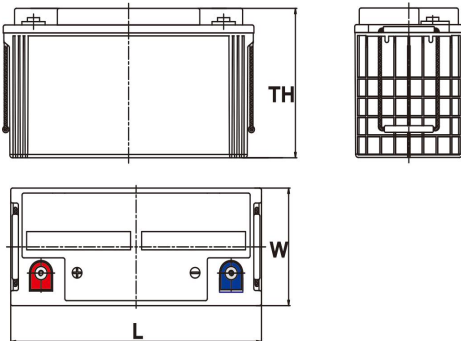
产品应用

- ◆ 不间断电源(UPS)
- ◆ 通信和电力设备
- ◆ 紧急照明设备
- ◆ 火灾报警及安防系统
- ◆ 控制设备及其他机械自动化设备
- ◆ 应急电源系统
- ◆ 便携式音频设备
- ◆ 电动工具，割草机，真空吸尘器
- ◆ 照相设备
- ◆ 便携式测量工具
- ◆ 便携式通话设备
- ◆ 各式电动玩具及娱乐设施
- ◆ 照明设备

尺寸

单个尺寸

长	408±2mm
宽	177±2mm
高	224±3mm
总高	224±3mm



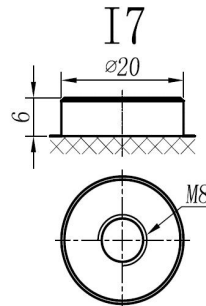
端子类型

单位:mm

端子类型 I7

重量

31.7kg 70.09lbs



ISO9001 ISO14001 OHSAS18001

内容如有改动，恕不另行通知

动力电池

储能电池

备用电池

摩托车电池



TN12-120E

规格书

额定电压	12V	
容量(25°C)	115Ah	20hr Rate (1.80V/cell)
	109Ah	10hr Rate (1.80V/cell)
	97Ah	5hr Rate (1.75V/cell)
	88Ah	3hr Rate (1.70V/cell)
	70Ah	1hr Rate (1.60V/cell)
壳体材料	ABS (阻燃ABS壳体可选)	
使用温度范围	放电	-20 ~ +50°C
	充电	0 ~ +40°C
	储存	-15 ~ +40°C
不同温度下 电池容量系数	40°C / 104°F	106%
	25°C / 77°F	100%
	0°C / 32°F	86%
	-10°C / 14°F	65%
充电	浮充电压	2.23 -2.27V/单格@25°C, 温度补偿系数: -3mV/单格/°C
	均充电压	2.35 -2.40V/单格@25°C, 温度补偿系数: -3mV/单格/°C
	循环使用电压	2.40 -2.50V/单格@25°C, 温度补偿系数: -5mV/单格/°C
最大充电电流	34.5A (0.3C)	
最大放电电流 (5S)	1250A	
电阻	4.5mΩ	
自放电	<3%, TN系列储存在25°C时需每6个月进行一次补充充电, 环境温度更高时则充电间隔时间越短	

放电性能

恒电流放电表 (25°C/77°F) 单位: A															
F.V/Time	5min	10min	15min	20min	30min	45min	1h	2h	3h	4h	5h	6h	8h	10h	20h
1.85V/cell	189.7	154.1	133.9	115.2	89.5	68.2	55.32	34.15	26.39	21.57	17.86	15.50	12.57	10.485	5.661
1.80V/cell	243.1	187.1	155.0	129.8	100.0	75.7	60.14	36.74	28.06	22.84	18.93	16.41	13.18	10.890	5.726
1.75V/cell	274.2	206.7	167.8	138.6	104.3	78.5	62.63	38.16	28.72	23.40	19.39	16.82	13.38	11.111	5.801
1.70V/cell	302.3	223.5	179.5	146.3	109.2	81.9	64.91	39.43	29.49	24.00	19.84	17.17	13.58	11.211	5.886
1.67V/cell	334.9	241.1	192.3	155.0	114.9	84.4	67.29	40.55	30.55	24.72	20.35	17.52	13.79	11.411	5.956
1.60V/cell	373.9	261.3	204.5	164.2	121.1	87.8	69.53	41.92	31.52	25.38	20.86	17.88	13.94	11.562	6.001

恒功率放电表 (25°C/77°F) 单位: W															
F.V/Time	5min	10min	15min	20min	30min	45min	1h	2h	3h	4h	5h	6h	8h	10h	20h
1.85V/cell	349.3	286.7	246.2	208.0	167.2	127.6	104.84	67.27	53.33	43.72	35.36	30.85	25.18	21.526	11.724
1.80V/cell	479.2	361.9	293.5	242.4	194.3	147.2	116.85	72.94	57.08	46.41	37.77	32.96	26.62	22.775	11.820
1.75V/cell	528.8	391.3	316.6	258.2	200.0	151.4	121.66	75.34	57.95	47.28	38.63	33.73	27.00	22.967	11.916
1.70V/cell	566.2	416.9	333.4	269.3	207.0	156.8	125.12	78.13	59.48	48.43	39.50	34.40	27.39	23.159	12.204
1.67V/cell	615.5	445.7	351.7	284.0	216.6	159.3	128.38	79.86	61.69	49.97	40.46	35.08	27.68	23.640	12.300
1.60V/cell	663.2	472.9	370.0	299.1	227.1	165.1	132.23	82.16	63.33	51.32	41.71	35.75	27.96	23.832	12.396