

Motive Battery

Energy Storage Battery

Reserve Battery

Motorcycle Battery



Industry Battery-General Purpose AGM Battery-TN Series

TN12-135

(12V 135Ah)

GENERAL FEATURES

- ♦ Oxygen recombination technology: maintenance-free, no need to add water or acid
- ♦ The patent grid alloy: less gassing, low self-discharge, excellent corrosion resistance
- ♦ Design life is 7~9 years at 25°C under standby application, deep discharge recoverability
- ♦ High quality AGM separator: extend cycle life and prevent micro short circuit
- ♦ ABS container: increase the strength of battery (Flame-retardant ABS UL94-V0 is optional)

Dimension

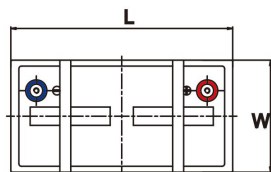
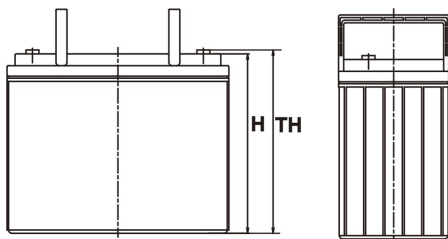
Unit:mm

Length 345±2mm / 13.58inch

Width 172±2mm / 6.77inch

Container Height 274±3mm / 10.79inch

Total Height 280±3mm / 11.02inch



Application

- ♦ Uninterrupted Power Supply (UPS)
- ♦ Communications and electric equipment
- ♦ Emergency lighting equipment
- ♦ Fire alarm and security system
- ♦ Robots, control equipment, and other factory automation equipment
- ♦ Emergency power supply (EPS)
- ♦ Portable VTR/TV, radio and so on
- ♦ Power tools, lawn mowers, vacuum cleaners
- ♦ Cameras and photographic equipment
- ♦ Portable measuring equipment
- ♦ Portable telephone sets
- ♦ Various power toys and hobby equipment
- ♦ Lighting equipment

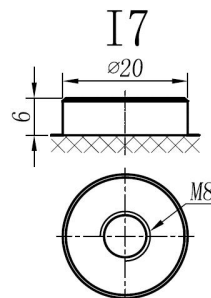
Terminal

Unit:mm

Terminal Type: I7

Weight

41.2kg 90.83lbs



ISO9001 ISO14001 OHSAS18001

This document is subject to change without prior notification

Motive Battery

Energy Storage Battery

Reserve Battery

Motorcycle Battery



TN12-135

Specification

Nominal Voltage	12V	
Rated Capacity(25°C)	141Ah	20hr Rate(1.80V/cell)
	135Ah	10hr Rate(1.80V/cell)
	118Ah	5hr Rate(1.75V/cell)
	110Ah	3hr Rate(1.70V/cell)
	84Ah	1hr Rate(1.60V/cell)
Container Material	ABS (Flame-retardant ABS UL94-V0 is optional)	
Operating Temperature Range	Discharge	-20 ~ +50°C
	Charge	0 ~ +40°C
	Storage	-15 ~ +40°C
Capacity Effected by Temperature	40°C / 104°F	106%
	25°C / 77°F	100%
	0°C / 32°F	86%
	-10°C / 14°F	65%
Charge	Float Voltage	2.23 -2.27V/cell@25°C, Tem.Coefficient : -3mV/cell/°C
	Equalize Voltage	2.35 -2.40V/cell@25°C, Tem.Coefficient : -3mV/cell/°C
	Cycle Voltage	2.40 -2.50V/cell@25°C, Tem.Coefficient : -5mV/cell/°C
Max. Charging Current	40.5A (0.3C)	
Max. Discharge Current (5S)	1350A	
Internal Resistance	4mΩ	
Self-Discharge	<3%, TN series stored at 25 °C require a supplementary charge every six months, the charging interval would shrink when the ambient temperature went higher	

Discharge Performance

Constant Current Discharge Table (25°C/77°F) Unit: A

F.V/Time	5min	10min	15min	20min	30min	45min	1h	2h	3h	4h	5h	6h	8h	10h	20h
1.85V/cell	231.3	181.9	154.7	129.3	102.8	78.9	64.55	41.11	32.48	26.59	21.42	18.58	15.05	12.713	6.957
1.80V/cell	310.4	232.3	186.9	152.9	121.3	91.8	72.37	44.86	35.02	28.42	23.04	19.90	15.96	13.514	7.027
1.75V/cell	350.0	255.3	204.1	164.5	125.9	95.2	75.72	46.59	35.63	29.03	23.55	20.50	16.26	13.614	7.097
1.70V/cell	385.5	278.3	217.9	172.9	131.0	99.1	78.05	48.42	36.64	29.74	24.16	20.91	16.46	13.814	7.227
1.67V/cell	425.0	300.3	231.6	183.7	138.2	101.5	80.69	49.74	38.16	30.75	24.87	21.31	16.77	14.114	7.327
1.60V/cell	468.8	326.0	247.7	195.6	145.9	105.8	83.64	51.46	39.38	31.77	25.68	21.82	16.87	14.214	7.367

Constant Power Discharge Table (25°C/77°F) Unit: W

F.V/Time	5min	10min	15min	20min	30min	45min	1h	2h	3h	4h	5h	6h	8h	10h	20h
1.85V/cell	422.9	335.9	288.6	243.8	195.9	149.5	122.92	78.78	62.56	51.25	41.44	36.14	29.53	25.225	13.814
1.80V/cell	561.6	424.1	343.9	284.0	227.6	172.6	136.94	85.39	66.97	54.45	44.24	38.64	31.13	26.727	13.914
1.75V/cell	619.7	458.6	371.1	302.5	234.4	177.4	142.54	88.29	67.87	55.46	45.25	39.54	31.63	26.927	14.014
1.70V/cell	663.5	488.5	390.7	315.6	242.6	183.8	146.65	91.59	69.67	56.76	46.35	40.34	32.03	27.227	14.314
1.67V/cell	721.3	522.3	412.2	332.7	253.9	186.7	150.45	93.59	72.27	58.56	47.45	41.14	32.43	27.728	14.414
1.60V/cell	777.2	554.2	433.5	350.6	266.1	193.5	154.95	96.30	74.17	60.16	48.85	41.84	32.73	27.928	14.515

□ 动力电池

■ 储能电池

■ 备用电池

□ 摩托车电池



阀控式免维护铅酸蓄电池-通用型

TN12-135

(12V 135Ah)

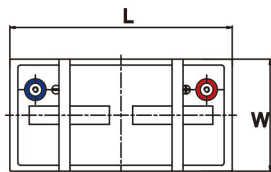
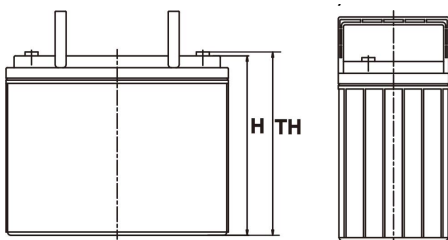
产品特点

- ◆ 阀控式免维护设计，寿命期间无需加水或加酸
- ◆ 专利稀土合金板栅，减少气体产生，自放电率低，抗腐蚀能力出众
- ◆ 在25°C下，产品浮充设计寿命为7~9年，优良的深放电恢复能力
- ◆ 高质量AGM隔板：防止微短路，延长循环寿命
- ◆ ABS壳盖：电池外壳强度高（阻燃壳体UL94-V0可选）

尺寸

单个尺寸

长	345±2mm
宽	172±2mm
高	274±3mm
总高	280±3mm



产品应用

- ◆ 不间断电源(UPS)
- ◆ 通信和电力设备
- ◆ 紧急照明设备
- ◆ 火灾报警及安防系统
- ◆ 机器人、控制设备及其他机械自动化设备
- ◆ 应急电源系统
- ◆ 便携式音频设备
- ◆ 电动工具，割草机，真空吸尘器
- ◆ 照相设备
- ◆ 便携式测量工具
- ◆ 便携式通话设备
- ◆ 各式电动玩具及娱乐设施
- ◆ 照明设备

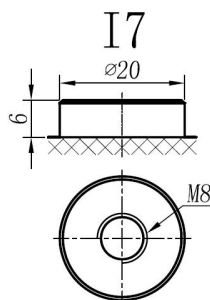
端子类型

单位:mm

端子类型 I7

重量

41.2kg 90.83lbs



内容如有改动，恕不另行通知



ISO9001 ISO14001 OHSAS18001

天能电池集团有限公司

长兴天能进出口有限公司

www.tiannenggroup.com

版本：

V1.0

发行日期：

2016/7/1

©2016 天能集团 版权所有，保留一切权利；商标所有权属于天能集团及其附属机构

浙江省长兴画溪工业区包桥路18号天能集团 邮编：313199

□ 动力电池

■ 储能电池

■ 备用电池

□ 摩托车电池



TN12-135

规格书

额定电压	12V	
容量(25°C)	141Ah	20hr Rate(1.80V/cell)
	135Ah	10hr Rate(1.80V/cell)
	118Ah	5hr Rate(1.75V/cell)
	110Ah	3hr Rate(1.70V/cell)
	84Ah	1hr Rate(1.60V/cell)
壳体材料	ABS (阻燃ABS壳体可选)	
使用温度范围	放电	-20 ~ +50°C
	充电	0 ~ +40°C
	储存	-15 ~ +40°C
不同温度下 电池容量系数	40°C / 104°F	106%
	25°C / 77°F	100%
	0°C / 32°F	86%
	-10°C / 14°F	65%
充电	浮充电压	2.23 - 2.27V/单格@25°C, 温度补偿系数: -3mV/单格/°C
	均充电压	2.35 - 2.40V/单格@25°C, 温度补偿系数: -3mV/单格/°C
	循环使用电压	2.40 - 2.50V/单格@25°C, 温度补偿系数: -5mV/单格/°C
最大充电电流	40.5A (0.3C)	
最大放电电流 (5S)	1350A	
电阻	4mΩ	
自放电	<3%, TN系列储存在25°C时需每6个月进行一次补充充电, 环境温度更高时则充电间隔时间越短	

放电性能

恒电流放电表 (25°C/77°F) 单位: A															
F.V/Time	5min	10min	15min	20min	30min	45min	1h	2h	3h	4h	5h	6h	8h	10h	20h
1.85V/cell	231.3	181.9	154.7	129.3	102.8	78.9	64.55	41.11	32.48	26.59	21.42	18.58	15.05	12.713	6.957
1.80V/cell	310.4	232.3	186.9	152.9	121.3	91.8	72.37	44.86	35.02	28.42	23.04	19.90	15.96	13.514	7.027
1.75V/cell	350.0	255.3	204.1	164.5	125.9	95.2	75.72	46.59	35.63	29.03	23.55	20.50	16.26	13.614	7.097
1.70V/cell	385.5	278.3	217.9	172.9	131.0	99.1	78.05	48.42	36.64	29.74	24.16	20.91	16.46	13.814	7.227
1.67V/cell	425.0	300.3	231.6	183.7	138.2	101.5	80.69	49.74	38.16	30.75	24.87	21.31	16.77	14.114	7.327
1.60V/cell	468.8	326.0	247.7	195.6	145.9	105.8	83.64	51.46	39.38	31.77	25.68	21.82	16.87	14.214	7.367

恒功率放电表 (25°C/77°F) 单位: W															
F.V/Time	5min	10min	15min	20min	30min	45min	1h	2h	3h	4h	5h	6h	8h	10h	20h
1.85V/cell	422.9	335.9	288.6	243.8	195.9	149.5	122.92	78.78	62.56	51.25	41.44	36.14	29.53	25.225	13.814
1.80V/cell	561.6	424.1	343.9	284.0	227.6	172.6	136.94	85.39	66.97	54.45	44.24	38.64	31.13	26.727	13.914
1.75V/cell	619.7	458.6	371.1	302.5	234.4	177.4	142.54	88.29	67.87	55.46	45.25	39.54	31.63	26.927	14.014
1.70V/cell	663.5	488.5	390.7	315.6	242.6	183.8	146.65	91.59	69.67	56.76	46.35	40.34	32.03	27.227	14.314
1.67V/cell	721.3	522.3	412.2	332.7	253.9	186.7	150.45	93.59	72.27	58.56	47.45	41.14	32.43	27.728	14.414
1.60V/cell	777.2	554.2	433.5	350.6	266.1	193.5	154.95	96.30	74.17	60.16	48.85	41.84	32.73	27.928	14.515