

Motive Battery

Energy Storage Battery

Reserve Battery

Motorcycle Battery



Industry Battery-General Purpose AGM Battery-TN Series

TN12-180E

(12V 180Ah)

GENERAL FEATURES

- ♦ Oxygen recombination technology: maintenance-free, no need to add water or acid
- ♦ The patent grid alloy: less gassing, low self-discharge, excellent corrosion resistance
- ♦ Design life is 7~9 years at 25°C under standby application, deep discharge recoverability
- ♦ High quality AGM separator: extend cycle life and prevent micro short circuit
- ♦ ABS container: increase the strength of battery (Flame-retardant ABS UL94-V0 is optional)

Dimension

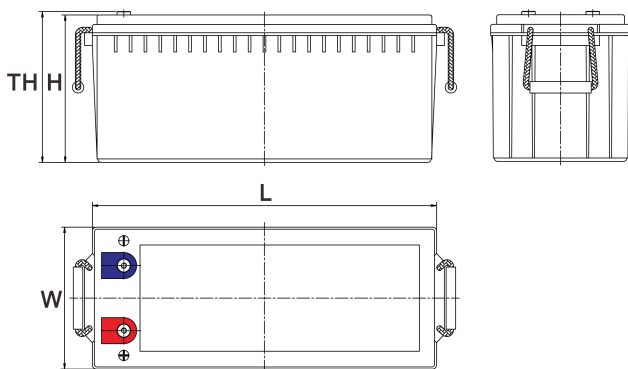
Unit:mm

Length 532±2mm / 20.94inch

Width 207±2mm / 8.15inch

Container Height 215±3mm / 8.46inch

Total Height 220±3mm / 8.66inch



Application

- ♦ Uninterrupted Power Supply (UPS)
- ♦ Communications and electric equipment
- ♦ Emergency lighting equipment
- ♦ Fire alarm and security system
- ♦ Control equipment, and other factory automation equipment
- ♦ Emergency power supply (EPS)
- ♦ Portable VTR/TV, radio and so on
- ♦ Power tools, lawn mowers, vacuum cleaners
- ♦ Cameras and photographic equipment
- ♦ Portable measuring equipment
- ♦ Portable telephone sets
- ♦ Various power toys and hobby equipment
- ♦ Lighting equipment

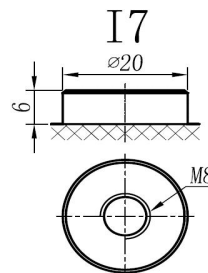
Terminal

Unit:mm

Terminal Type: I7

Weight

50.2kg 110.99lbs



This document is subject to change without prior notification

Motive Battery

Energy Storage Battery

Reserve Battery

Motorcycle Battery



TN12-180E

Specificaion

Nominal Voltage	12V	
Rated Capacity(25°C)	180Ah	20hr Rate (1.80V/cell)
	173Ah	10hr Rate (1.80V/cell)
	153Ah	5hr Rate (1.75V/cell)
	142Ah	3hr Rate (1.70V/cell)
	108Ah	1hr Rate (1.60V/cell)
Container Material	ABS (Flame-retardant ABS UL94-V0 is optional)	
Operating Temperature Range	Discharge	-20 ~ +50°C
	Charge	0 ~ +40°C
	Storage	-15 ~ +40°C
Capacity Effected by Temperature	40°C / 104°F	106%
	25°C / 77°F	100%
	0°C / 32°F	86%
	-10°C / 14°F	65%
Charge	Float Voltage	2.23 -2.27V/cell@25°C, Tem.Coefficient : -3mV/cell/°C
	Equalize Voltage	2.35 -2.40V/cell@25°C, Tem.Coefficient : -3mV/cell/°C
	Cycle Voltage	2.40 -2.50V/cell@25°C, Tem.Coefficient : -5mV/cell/°C
Max. Charging Current	54A (0.3C)	
Max. Discharge Current (5S)	1750A	
Internal Resistance	3.2mΩ	
Self-Discharge	<3%, TN series stored at 25 °C require a supplementary charge every six months, the charging interval would shrink when the ambient temperature went higher	

Discharge Performance

Constant Current Discharge Table (25°C/77°F) Unit: A

F.V/Time	10min	15min	20min	30min	45min	1h	2h	3h	4h	5h	6h	8h	10h	20h
1.85V/cell	234.8	199.7	167.1	131.6	100.9	83.59	53.26	42.04	34.36	27.67	23.76	19.30	16.34	8.917
1.80V/cell	300.1	241.3	197.5	155.3	117.4	93.63	58.09	45.29	36.72	29.73	25.50	20.46	17.30	9.004
1.75V/cell	329.8	263.5	212.4	161.2	121.9	97.96	60.25	46.08	37.51	30.52	26.18	20.85	17.49	9.091
1.70V/cell	359.3	281.4	223.2	167.8	126.8	101.01	62.62	47.46	38.50	31.31	26.76	21.14	17.68	9.264
1.67V/cell	387.8	299.2	237.2	177.0	129.9	104.36	64.39	49.42	39.87	32.19	27.34	21.43	17.97	9.389
1.60V/cell	421.1	320.0	252.7	186.8	135.4	108.10	66.56	50.90	41.06	33.28	27.92	21.62	18.16	9.437

Constant Power Discharge Table (25°C/77°F) Unit: W

F.V/Time	10min	15min	20min	30min	45min	1h	2h	3h	4h	5h	6h	8h	10h	20h
1.85V/cell	433.8	372.6	314.8	250.8	194.1	161.17	103.38	82.01	67.15	54.35	46.73	38.11	32.29	17.700
1.80V/cell	547.7	444.2	366.7	291.4	224.0	179.58	112.04	87.72	71.38	58.09	49.93	40.24	34.21	17.796
1.75V/cell	592.2	479.3	390.7	300.0	230.3	186.97	115.78	89.00	72.66	59.37	51.10	40.82	34.50	17.989
1.70V/cell	630.9	504.6	407.5	310.6	238.5	192.28	120.12	91.37	74.53	60.75	52.07	41.40	34.79	18.277
1.67V/cell	674.6	532.3	429.7	324.9	242.3	197.30	122.77	94.81	76.79	62.22	53.04	41.98	35.46	18.470
1.60V/cell	715.7	559.9	452.8	340.7	251.2	203.21	126.22	97.27	78.96	64.09	54.10	42.27	35.75	18.566

☐ 动力电池

■ 储能电池

■ 备用电池

☐ 摩托车电池



阀控式免维护铅酸蓄电池-通用型

TN12-180E

(12V 180Ah)

产品特点

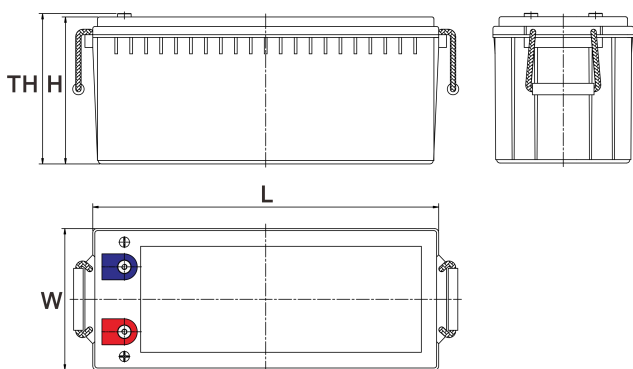
- ◆ 阀控式免维护设计，寿命期间无需加水或加酸
- ◆ 专利稀土合金板栅，减少气体产生，自放电率低，抗腐蚀能力出众
- ◆ 在25°C下，产品浮充设计寿命为7~9年，优良的深放电恢复能力
- ◆ 高质量AGM隔板：防止微短路，延长循环寿命
- ◆ ABS壳盖：电池外壳强度高（阻燃壳体UL94-V0可选）



尺寸

单个尺寸

长	532±2mm
宽	207±2mm
高	215±3mm
总高	220±3mm



产品应用

- ◆ 不间断电源(UPS)
- ◆ 通信和电力设备
- ◆ 紧急照明设备
- ◆ 火灾报警及安防系统
- ◆ 控制设备及其他机械自动化设备
- ◆ 应急电源系统
- ◆ 便携式音频设备
- ◆ 电动工具，割草机，真空吸尘器
- ◆ 照相设备
- ◆ 便携式测量工具
- ◆ 便携式通话设备
- ◆ 各式电动玩具及娱乐设施
- ◆ 照明设备

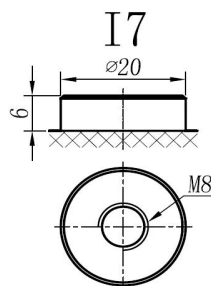
端子类型

单位:mm

端子类型 I7

重量

50.2kg 110.99lbs



ISO9001 ISO14001 OHSAS18001

内容如有改动，恕不另行通知

动力电池

储能电池



备用电池

摩托车电池

TN12-180E

规格书

额定电压	12V	
容量(25°C)	180Ah	20hr Rate (1.80V/cell)
	173Ah	10hr Rate (1.80V/cell)
	153Ah	5hr Rate (1.75V/cell)
	142Ah	3hr Rate (1.70V/cell)
	108Ah	1hr Rate (1.60V/cell)
壳体材料	ABS (阻燃ABS壳体可选)	
使用温度范围	放电	-20 ~ +50°C
	充电	0 ~ +40°C
	储存	-15 ~ +40°C
不同温度下 电池容量系数	40°C / 104°F	106%
	25°C / 77°F	100%
	0°C / 32°F	86%
	-10°C / 14°F	65%
充电	浮充电压	2.23 -2.27V/单格@25°C, 温度补偿系数: -3mV/单格/°C
	均充电压	2.35 -2.40V/单格@25°C, 温度补偿系数: -3mV/单格/°C
	循环使用电压	2.40 -2.50V/单格@25°C, 温度补偿系数: -5mV/单格/°C
最大充电电流	54A (0.3C)	
最大放电电流 (5S)	1750A	
电阻	3.2mΩ	
自放电	<3%, TN系列储存在25°C 时需每6个月进行一次补充充电, 环境温度更高时则充电间隔时间越短	

放电性能

恒电流放电表 (25°C/77°F) 单位: A														
F.V/Time	10min	15min	20min	30min	45min	1h	2h	3h	4h	5h	6h	8h	10h	20h
1.85V/cell	234.8	199.7	167.1	131.6	100.9	83.59	53.26	42.04	34.36	27.67	23.76	19.30	16.34	8.917
1.80V/cell	300.1	241.3	197.5	155.3	117.4	93.63	58.09	45.29	36.72	29.73	25.50	20.46	17.30	9.004
1.75V/cell	329.8	263.5	212.4	161.2	121.9	97.96	60.25	46.08	37.51	30.52	26.18	20.85	17.49	9.091
1.70V/cell	359.3	281.4	223.2	167.8	126.8	101.01	62.62	47.46	38.50	31.31	26.76	21.14	17.68	9.264
1.67V/cell	387.8	299.2	237.2	177.0	129.9	104.36	64.39	49.42	39.87	32.19	27.34	21.43	17.97	9.389
1.60V/cell	421.1	320.0	252.7	186.8	135.4	108.10	66.56	50.90	41.06	33.28	27.92	21.62	18.16	9.437

恒功率放电表 (25°C/77°F) 单位: W														
F.V/Time	10min	15min	20min	30min	45min	1h	2h	3h	4h	5h	6h	8h	10h	20h
1.85V/cell	433.8	372.6	314.8	250.8	194.1	161.17	103.38	82.01	67.15	54.35	46.73	38.11	32.29	17.700
1.80V/cell	547.7	444.2	366.7	291.4	224.0	179.58	112.04	87.72	71.38	58.09	49.93	40.24	34.21	17.796
1.75V/cell	592.2	479.3	390.7	300.0	230.3	186.97	115.78	89.00	72.66	59.37	51.10	40.82	34.50	17.989
1.70V/cell	630.9	504.6	407.5	310.6	238.5	192.28	120.12	91.37	74.53	60.75	52.07	41.40	34.79	18.277
1.67V/cell	674.6	532.3	429.7	324.9	242.3	197.30	122.77	94.81	76.79	62.22	53.04	41.98	35.46	18.470
1.60V/cell	715.7	559.9	452.8	340.7	251.2	203.21	126.22	97.27	78.96	64.09	54.10	42.27	35.75	18.566