

Motive Battery

Energy Storage Battery

Reserve Battery

Motorcycle Battery



Industry Battery-General Purpose AGM Battery-TN Series

TN12-200B

(12V 200Ah)

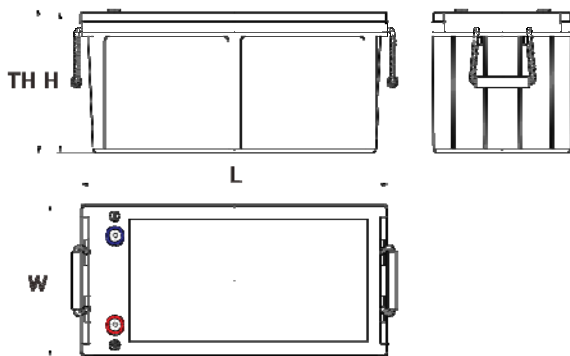
GENERAL FEATURES

- ◆ Oxygen recombination technology: maintenance-free, no need to add water or acid
- ◆ The patent grid alloy: less gassing, low self-discharge, excellent corrosion resistance
- ◆ Design life is 7~9 years at 25°C under standby application, deep discharge recoverability
- ◆ High quality AGM separator: extend cycle life and prevent micro short circuit
- ◆ ABS container: increase the strength of battery (Flame-retardant ABS UL94-V0 is optional)

Dimension

Unit:mm

Length	520±2mm / 20.47inch
Width	239±2mm / 9.41inch
Container Height	220±3mm / 8.66inch
Total Height	225±3mm / 8.86inch



Application

- ◆ Uninterrupted Power Supply (UPS)
- ◆ Communications and electric equipment
- ◆ Emergency lighting equipment
- ◆ Fire alarm and security system
- ◆ Control equipment, and other factory automation equipment
- ◆ Emergency power supply (EPS)
- ◆ Portable VTR/TV, radio and so on
- ◆ Power tools, lawn mowers, vacuum cleaners
- ◆ Cameras and photographic equipment
- ◆ Portable measuring equipment
- ◆ Portable telephone sets
- ◆ Various power toys and hobby equipment
- ◆ Lighting equipment

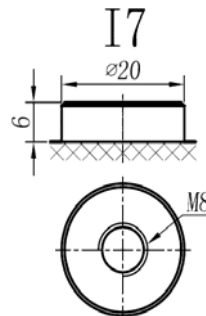
Terminal

Unit:mm

Terminal Type: I7

Weight

57.8kg 127.79lbs



This document is subject to change without prior notification

Motive Battery Energy Storage Battery Reserve Battery Motorcycle Battery

TN12-200B

Specificaion

Nominal Voltage	12V	
Rated Capacity(25°C)	208Ah	20hr Rate (1.80V/cell)
	200Ah	10hr Rate (1.80V/cell)
	175Ah	5hr Rate (1.75V/cell)
	163Ah	3hr Rate (1.70V/cell)
	124Ah	1hr Rate (1.60V/cell)
Container Material	ABS (Flame-retardant ABS UL94-V0 is optional)	
Operating Temperature Range	Discharge	-20 ~ +50°C
	Charge	0 ~ +40°C
	Storage	-15 ~ +40°C
Capacity Effected by Temperature	40°C / 104°F	106%
	25°C / 77°F	100%
	0°C / 32°F	86%
	-10°C / 14°F	65%
Charge	Float Voltage	2.23 -2.27V/cell@25°C, Tem.Coefficient : -3mV/cell/°C
	Equalize Voltage	2.35 -2.40V/cell@25°C, Tem.Coefficient : -3mV/cell/°C
	Cycle Voltage	2.40 -2.50V/cell@25°C, Tem.Coefficient : -5mV/cell/°C
Max. Charging Current	60A (0.3C)	
Max. Discharge Current (5S)	2000A	
Internal Resistance	2.7mΩ	
Self-Discharge	<3%, TN series stored at 25 °C require a supplementary charge every six months, the charging interval would shrink when the ambient temperature went higher	

Discharge Performance

Constant Current Discharge Table (25°C/77°F) Unit: A

F.V/Time	10min	15min	20min	30min	45min	1h	2h	3h	4h	5h	6h	8h	10h	20h
1.85V/cell	278.7	240.2	204.8	155.0	116.8	95.71	61.00	46.89	38.16	31.77	27.47	22.32	18.92	10.310
1.80V/cell	344.2	282.7	236.0	179.7	135.9	107.18	66.48	51.36	41.21	34.10	29.49	23.63	20.02	10.410
1.75V/cell	378.2	302.3	250.5	189.4	141.1	112.16	69.02	52.78	42.33	35.02	30.30	24.04	20.22	10.511
1.70V/cell	412.2	322.8	264.3	196.6	146.7	115.71	71.76	54.30	43.34	35.83	30.91	24.44	20.42	10.711
1.67V/cell	444.8	343.2	281.7	204.8	150.3	119.57	73.79	56.64	44.86	36.84	31.61	24.95	20.82	10.811
1.60V/cell	476.9	367.1	297.9	216.2	156.7	123.83	76.23	58.36	46.18	37.86	32.32	25.35	21.02	10.911

Constant Power Discharge Table (25°C/77°F) Unit: W

F.V/Time	10min	15min	20min	30min	45min	1h	2h	3h	4h	5h	6h	8h	10h	20h
1.85V/cell	514.8	448.2	386.1	295.3	221.5	182.08	116.72	90.19	73.47	61.36	53.55	43.64	37.44	20.420
1.80V/cell	628.3	520.4	438.4	337.2	255.7	202.80	126.53	98.20	78.98	65.57	57.26	46.15	39.54	20.621
1.75V/cell	679.4	549.7	460.7	352.6	262.8	211.21	130.73	100.60	80.78	67.27	58.66	46.85	39.94	20.721
1.70V/cell	723.7	578.8	482.5	363.9	272.3	217.22	135.74	103.20	82.68	68.67	59.76	47.45	40.24	21.121
1.67V/cell	773.9	610.7	510.4	376.1	276.6	222.92	138.64	107.11	85.19	70.27	60.86	48.45	41.04	21.421
1.60V/cell	810.6	642.3	533.9	394.2	286.7	229.63	142.64	109.91	87.39	72.07	61.96	49.05	41.44	21.522