

Motive Battery

Energy Storage Battery

Reserve Battery

Motorcycle Battery



Industry Battery-General Purpose AGM Battery-TN Series

TN12-30B

(12V 30Ah)

GENERAL FEATURES

- ♦ Oxygen recombination technology: maintenance-free, no need to add water or acid
- ♦ The patent grid alloy: less gassing, low self-discharge, excellent corrosion resistance
- ♦ Design life is 3~5 years at 25°C under standby application, deep discharge recoverability
- ♦ High quality AGM separator: extend cycle life and prevent micro short circuit
- ♦ ABS container: increase the strength of battery (Flame-retardant ABS UL94-V0 is optional)

Dimension

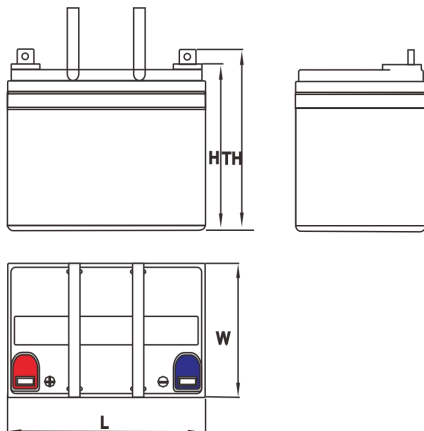
Unit:mm

Length 195±2mm / 7.68inch

Width 130±2mm / 5.12inch

Container Height 164±3mm / 6.46inch

Total Height 178±3mm / 7.01inch



Application

- ♦ Uninterrupted Power Supply (UPS)
- ♦ Communications and electric equipment
- ♦ Emergency lighting equipment
- ♦ Fire alarm and security system
- ♦ Robots, control equipment, and other factory automation equipment
- ♦ Emergency power supply (EPS)
- ♦ Portable VTR/TV, radio and so on
- ♦ Power tools, lawn mowers, vacuum cleaners
- ♦ Cameras and photographic equipment
- ♦ Portable measuring equipment
- ♦ Portable telephone sets
- ♦ Various power toys and hobby equipment
- ♦ Lighting equipment

Terminal

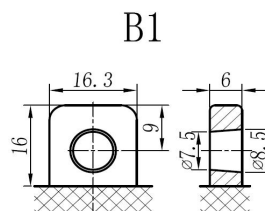
Unit:mm

Terminal Type: B1

Weight

9.7kg

21.38lbs



This document is subject to change without prior notification

Motive Battery

Energy Storage Battery

Reserve Battery

Motorcycle Battery



TN12-30B

Specificaion

Nominal Voltage	12V	
Rated Capacity(25°C)	30.03Ah	20hr Rate(1.80V/cell)
	27.93Ah	10hr Rate(1.80V/cell)
	25.88Ah	5hr Rate(1.75V/cell)
	23.93Ah	3hr Rate(1.70V/cell)
	19.08Ah	1hr Rate(1.60V/cell)
Container Material	ABS (Flame-retardant ABS UL94-V0 is optional)	
Operating Temperature Range	Discharge	-20 ~ +50°C
	Charge	0 ~ +40°C
	Storage	-15 ~ +40°C
Capacity Effected by Temperature	40°C / 104°F	106%
	25°C / 77°F	100%
	0°C / 32°F	86%
	-10°C / 14°F	65%
Charge	Float Voltage	2.23 -2.27V/cell@25°C, Tem.Coefficient : -3mV/cell/°C
	Equalize Voltage	2.35 -2.40V/cell@25°C, Tem.Coefficient : -3mV/cell/°C
	Cycle Voltage	2.40 -2.50V/cell@25°C, Tem.Coefficient : -5mV/cell/°C
Max. Charging Current	9A (0.3C)	
Max. Discharge Current (5S)	450A	
Internal Resistance	13mΩ	
Self-Discharge	<3%, TN series stored at 25 °C require a supplementary charge every six months, the charging interval would shrink when the ambient temperature went higher	

Discharge Performance

Constant Current Discharge Table (25°C/77°F) Unit: A

F.V/Time	5min	10min	15min	20min	30min	45min	1h	2h	3h	4h	5h	6h	8h	10h	20h
1.85V/cell	57.2	43.9	36.3	31.4	24.3	18.2	15.33	9.05	7.08	5.77	4.70	4.06	3.27	2.713	1.491
1.80V/cell	76.8	56.2	43.9	37.1	28.7	21.1	17.15	9.89	7.62	6.15	5.04	4.35	3.47	2.793	1.502
1.75V/cell	86.6	61.7	48.0	40.0	29.8	21.9	17.97	10.25	7.76	6.29	5.18	4.47	3.54	2.873	1.522
1.70V/cell	95.3	67.2	51.3	42.0	31.0	22.8	18.47	10.56	7.98	6.46	5.31	4.57	3.58	2.923	1.542
1.67V/cell	105.1	72.6	54.5	44.6	32.7	23.3	18.98	10.66	8.32	6.68	5.45	4.67	3.64	2.983	1.562
1.60V/cell	115.9	78.8	58.3	47.5	34.5	24.4	19.08	11.17	8.58	6.89	5.63	4.77	3.67	3.023	1.572

Constant Power Discharge Table (25°C/77°F) Unit: W

F.V/Time	5min	10min	15min	20min	30min	45min	1h	2h	3h	4h	5h	6h	8h	10h	20h
1.85V/cell	104.6	81.1	67.9	59.3	46.3	34.4	29.13	17.32	13.61	11.11	9.09	7.91	6.40	5.365	2.943
1.80V/cell	138.8	102.4	80.9	69.1	53.9	39.7	32.43	18.82	14.61	11.81	9.70	8.45	6.77	5.516	2.973
1.75V/cell	153.3	110.7	87.3	73.6	55.5	40.8	33.83	19.42	14.81	12.01	9.93	8.65	6.87	5.656	2.993
1.70V/cell	164.1	118.0	91.9	76.8	57.4	42.3	34.73	19.82	15.22	12.31	10.21	8.82	6.96	5.766	3.043
1.67V/cell	178.4	126.1	97.0	80.9	60.1	42.9	35.34	20.02	15.72	12.71	10.41	8.98	7.06	5.876	3.083
1.60V/cell	192.2	133.8	102.0	85.3	63.0	44.5	35.44	20.82	16.12	13.01	10.71	9.14	7.11	5.936	3.103

☐ 动力电池

■ 储能电池

■ 备用电池

☐ 摩托车电池



阀控式免维护铅酸蓄电池-通用型

TN12-30B

(12V 30Ah)

产品特点

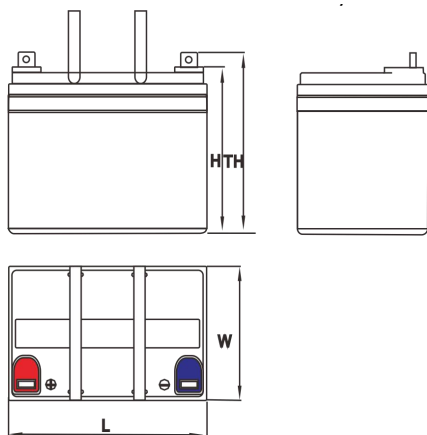
- ◆ 阀控式免维护设计，寿命期间无需加水或加酸
- ◆ 专利稀土合金板栅，减少气体产生，自放电率低，抗腐蚀能力出众
- ◆ 在25°C下，产品浮充设计寿命为3~5年，优良的深放电恢复能力
- ◆ 高质量AGM隔板：防止微短路，延长循环寿命
- ◆ ABS壳盖：电池外壳强度高（阻燃壳体UL94-V0可选）



尺寸

单个尺寸

长	195±2mm
宽	130±2mm
高	164±3mm
总高	178±3mm



产品应用

- ◆ 不间断电源(UPS)
- ◆ 通信和电力设备
- ◆ 紧急照明设备
- ◆ 火灾报警及安防系统
- ◆ 机器人、控制设备及其他机械自动化设备
- ◆ 应急电源系统
- ◆ 便携式音频设备
- ◆ 电动工具，割草机，真空吸尘器
- ◆ 照相设备
- ◆ 便携式测量工具
- ◆ 便携式通话设备
- ◆ 各式电动玩具及娱乐设施
- ◆ 照明设备

端子类型

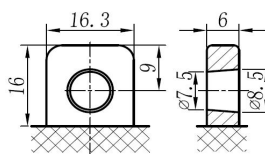
单位:mm

端子类型 B1

重量

9.7kg 21.38lbs

B1



ISO9001 ISO14001 OHSAS18001

内容如有改动，恕不另行通知

动力电池

储能电池

备用电池

摩托车电池



TN12-30B

规格书

额定电压	12V	
容量(25°C)	30.03Ah 20hr Rate(1.80V/cell)	
	27.93Ah 10hr Rate(1.80V/cell)	
	25.88Ah 5hr Rate(1.75V/cell)	
	23.93Ah 3hr Rate(1.70V/cell)	
壳体材料	ABS (阻燃ABS壳体可选)	
	使用温度范围	
	放电	-20 ~ +50°C
	充电	0 ~ +40°C
	储存	-15 ~ +40°C
不同温度下 电池容量系数	40°C / 104°F	106%
	25°C / 77°F	100%
	0°C / 32°F	86%
	-10°C / 14°F	65%
充电	浮充电压	2.23 - 2.27V/单格@25°C, 温度补偿系数: -3mV/单格/°C
	均充电压	2.35 - 2.40V/单格@25°C, 温度补偿系数: -3mV/单格/°C
	循环使用电压	2.40 - 2.50V/单格@25°C, 温度补偿系数: -5mV/单格/°C
最大充电电流	9A (0.3C)	
最大放电电流 (5S)	450A	
电阻	13mΩ	
自放电	<3%, TN系列储存在25°C时需每6个月进行一次补充充电, 环境温度更高时则充电间隔时间越短	

放电性能

恒电流放电表 (25°C/77°F) 单位: A															
F.V/Time	5min	10min	15min	20min	30min	45min	1h	2h	3h	4h	5h	6h	8h	10h	20h
1.85V/cell	57.2	43.9	36.3	31.4	24.3	18.2	15.33	9.05	7.08	5.77	4.70	4.06	3.27	2.713	1.491
1.80V/cell	76.8	56.2	43.9	37.1	28.7	21.1	17.15	9.89	7.62	6.15	5.04	4.35	3.47	2.793	1.502
1.75V/cell	86.6	61.7	48.0	40.0	29.8	21.9	17.97	10.25	7.76	6.29	5.18	4.47	3.54	2.873	1.522
1.70V/cell	95.3	67.2	51.3	42.0	31.0	22.8	18.47	10.56	7.98	6.46	5.31	4.57	3.58	2.923	1.542
1.67V/cell	105.1	72.6	54.5	44.6	32.7	23.3	18.98	10.66	8.32	6.68	5.45	4.67	3.64	2.983	1.562
1.60V/cell	115.9	78.8	58.3	47.5	34.5	24.4	19.08	11.17	8.58	6.89	5.63	4.77	3.67	3.023	1.572

恒功率放电表 (25°C/77°F) 单位: W															
F.V/Time	5min	10min	15min	20min	30min	45min	1h	2h	3h	4h	5h	6h	8h	10h	20h
1.85V/cell	104.6	81.1	67.9	59.3	46.3	34.4	29.13	17.32	13.61	11.11	9.09	7.91	6.40	5.365	2.943
1.80V/cell	138.8	102.4	80.9	69.1	53.9	39.7	32.43	18.82	14.61	11.81	9.70	8.45	6.77	5.516	2.973
1.75V/cell	153.3	110.7	87.3	73.6	55.5	40.8	33.83	19.42	14.81	12.01	9.93	8.65	6.87	5.656	2.993
1.70V/cell	164.1	118.0	91.9	76.8	57.4	42.3	34.73	19.82	15.22	12.31	10.21	8.82	6.96	5.766	3.043
1.67V/cell	178.4	126.1	97.0	80.9	60.1	42.9	35.34	20.02	15.72	12.71	10.41	8.98	7.06	5.876	3.083
1.60V/cell	192.2	133.8	102.0	85.3	63.0	44.5	35.44	20.82	16.12	13.01	10.71	9.14	7.11	5.936	3.103