

Motive Battery

Energy Storage Battery

Reserve Battery

Motorcycle Battery



Industry Battery-General Purpose AGM Battery-TN Series

TN12-35

(12V 35Ah)

GENERAL FEATURES

- ♦ Oxygen recombination technology: maintenance-free, no need to add water or acid
- ♦ The patent grid alloy: less gassing, low self-discharge, excellent corrosion resistance
- ♦ Design life is 3~5 years at 25°C under standby application, deep discharge recoverability
- ♦ High quality AGM separator: extend cycle life and prevent micro short circuit
- ♦ ABS container: increase the strength of battery (Flame-retardant ABS UL94-V0 is optional)

Dimension

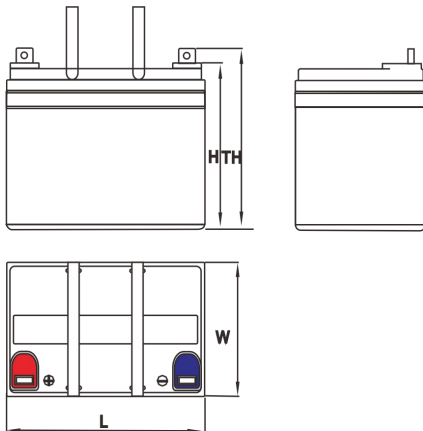
Unit:mm

Length 195±2mm / 7.68inch

Width 130±2mm / 5.12inch

Container Height 164±3mm / 6.46inch

Total Height 178±3mm / 7.01inch



Application

- ♦ Uninterrupted Power Supply (UPS)
- ♦ Communications and electric equipment
- ♦ Emergency lighting equipment
- ♦ Fire alarm and security system
- ♦ Robots, control equipment, and other factory automation equipment
- ♦ Emergency power supply (EPS)
- ♦ Portable VTR/TV, radio and so on
- ♦ Power tools, lawn mowers, vacuum cleaners
- ♦ Cameras and photographic equipment
- ♦ Portable measuring equipment
- ♦ Portable telephone sets
- ♦ Various power toys and hobby equipment
- ♦ Lighting equipment

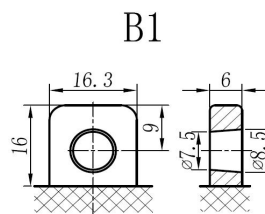
Terminal

Unit:mm

Terminal Type: B1

Weight

11.2kg 24.69lbs



ISO9001 ISO14001 OHSAS18001

This document is subject to change without prior notification

Motive Battery Energy Storage Battery Reserve Battery Motorcycle Battery

TN12-35

Specificaion

Nominal Voltage	12V	
Rated Capacity(25°C)	35.04Ah	20hr Rate(1.80V/cell)
	32.63Ah	10hr Rate(1.80V/cell)
	30.2Ah	5hr Rate(1.75V/cell)
	27.92Ah	3hr Rate(1.70V/cell)
	22.33Ah	1hr Rate(1.60V/cell)
Container Material	ABS (Flame-retardant ABS UL94-V0 is optional)	
Operating Temperature Range	Discharge	-20 ~ +50°C
	Charge	0 ~ +40°C
	Storage	-15 ~ +40°C
Capacity Effected by Temperature	40°C / 104°F	106%
	25°C / 77°F	100%
	0°C / 32°F	86%
	-10°C / 14°F	65%
Charge	Float Voltage	2.23 -2.27V/cell@25°C, Tem.Coefficient : -3mV/cell/°C
	Equalize Voltage	2.35 -2.40V/cell@25°C, Tem.Coefficient : -3mV/cell/°C
	Cycle Voltage	2.40 -2.50V/cell@25°C, Tem.Coefficient : -5mV/cell/°C
Max. Charging Current	10.5A (0.3C)	
Max. Discharge Current (5S)	525A	
Internal Resistance	11mΩ	
Self-Discharge	<3%, TN series stored at 25 °C require a supplementary charge every six months, the charging interval would shrink when the ambient temperature went higher	

Discharge Performance

Constant Current Discharge Table (25°C/77°F) Unit: A

F.V/Time	5min	10min	15min	20min	30min	45min	1h	2h	3h	4h	5h	6h	8h	10h	20h
1.85V/cell	66.8	51.3	42.4	36.7	28.3	21.2	17.86	10.56	8.26	6.72	5.48	4.74	3.82	3.163	1.732
1.80V/cell	89.6	65.5	51.3	43.3	33.4	24.7	20.00	11.57	8.89	7.18	5.89	5.08	4.05	3.263	1.752
1.75V/cell	101.0	72.0	56.1	46.6	34.7	25.6	20.91	11.98	9.06	7.34	6.04	5.21	4.12	3.343	1.772
1.70V/cell	111.2	78.4	59.8	49.0	36.1	26.6	21.62	12.28	9.31	7.53	6.19	5.32	4.17	3.413	1.802
1.67V/cell	122.6	84.6	63.6	52.1	38.1	27.3	22.13	12.48	9.71	7.80	6.36	5.44	4.24	3.483	1.822
1.60V/cell	135.2	91.9	68.0	55.5	40.3	28.4	22.33	12.99	10.01	8.04	6.58	5.56	4.28	3.524	1.832

Constant Power Discharge Table (25°C/77°F) Unit: W

F.V/Time	5min	10min	15min	20min	30min	45min	1h	2h	3h	4h	5h	6h	8h	10h	20h
1.85V/cell	122.0	94.6	79.2	69.2	54.1	40.1	34.03	20.22	15.92	12.91	10.61	9.22	7.47	6.256	3.433
1.80V/cell	162.0	119.5	94.4	80.6	62.9	46.3	37.84	21.92	17.02	13.71	11.31	9.85	7.90	6.436	3.463
1.75V/cell	178.8	129.2	101.8	85.9	64.7	47.6	39.44	22.62	17.22	14.01	11.61	10.11	8.02	6.607	3.493
1.70V/cell	191.4	137.6	107.2	89.5	67.0	49.3	40.54	23.22	17.72	14.41	11.81	10.31	8.12	6.727	3.554
1.67V/cell	208.1	147.1	113.1	94.4	70.1	50.2	41.14	23.42	18.42	14.81	12.11	10.51	8.23	6.857	3.604
1.60V/cell	224.2	156.2	119.0	99.5	73.5	52.0	41.34	24.22	18.82	15.22	12.51	10.71	8.29	6.917	3.614

☐ 动力电池

■ 储能电池

■ 备用电池

☐ 摩托车电池



阀控式免维护铅酸蓄电池-通用型

TN12-35

(12V 35Ah)

产品特点

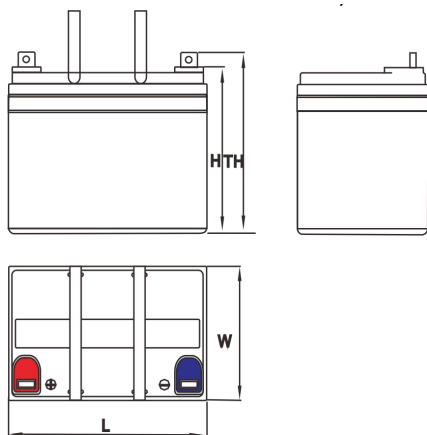
- ◆ 阀控式免维护设计，寿命期间无需加水或加酸
- ◆ 专利稀土合金板栅，减少气体产生，自放电率低，抗腐蚀能力出众
- ◆ 在25°C下，产品浮充设计寿命为3~5年，优良的深放电恢复能力
- ◆ 高质量AGM隔板：防止微短路，延长循环寿命
- ◆ ABS壳盖：电池外壳强度高（阻燃壳体UL94-V0可选）



尺寸

单个尺寸

长	195±2mm
宽	130±2mm
高	164±3mm
总高	178±3mm



产品应用

- ◆ 不间断电源(UPS)
- ◆ 通信和电力设备
- ◆ 紧急照明设备
- ◆ 火灾报警及安防系统
- ◆ 机器人、控制设备及其他机械自动化设备
- ◆ 应急电源系统
- ◆ 便携式音频设备
- ◆ 电动工具，割草机，真空吸尘器
- ◆ 照相设备
- ◆ 便携式测量工具
- ◆ 便携式通话设备
- ◆ 各式电动玩具及娱乐设施
- ◆ 照明设备

端子类型

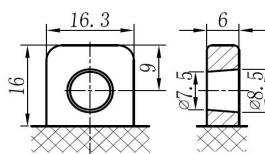
单位:mm

端子类型 B1

重量

11.2kg 24.69lbs

B1



ISO9001 ISO14001 OHSAS18001

内容如有改动，恕不另行通知

动力电池

储能电池

备用电池

摩托车电池



TN12-35

规格书

额定电压	12V
容量(25°C)	35.04Ah 20hr Rate(1.80V/cell)
	32.63Ah 10hr Rate(1.80V/cell)
	30.2Ah 5hr Rate(1.75V/cell)
	27.92Ah 3hr Rate(1.70V/cell)
	22.33Ah 1hr Rate(1.60V/cell)
壳体材料	ABS (阻燃ABS壳体可选)
使用温度范围	放电 -20 ~ +50°C
	充电 0 ~ +40°C
	储存 -15 ~ +40°C
不同温度下 电池容量系数	40°C / 104°F 106%
	25°C / 77°F 100%
	0°C / 32°F 86%
	-10°C / 14°F 65%
充电	浮充电压 2.23 -2.27V/单格@25°C, 温度补偿系数: -3mV/单格/°C
	均充电压 2.35 -2.40V/单格@25°C, 温度补偿系数: -3mV/单格/°C
	循环使用电压 2.40 -2.50V/单格@25°C, 温度补偿系数: -5mV/单格/°C
最大充电电流	10.5A (0.3C)
最大放电电流 (5S)	525A
电阻	11mΩ
自放电	<3%, TN系列储存在25°C时需每6个月进行一次补充充电, 环境温度更高时则充电间隔时间越短

放电性能

恒电流放电表 (25°C/77°F) 单位: A															
F.V/Time	5min	10min	15min	20min	30min	45min	1h	2h	3h	4h	5h	6h	8h	10h	20h
1.85V/cell	66.8	51.3	42.4	36.7	28.3	21.2	17.86	10.56	8.26	6.72	5.48	4.74	3.82	3.163	1.732
1.80V/cell	89.6	65.5	51.3	43.3	33.4	24.7	20.00	11.57	8.89	7.18	5.89	5.08	4.05	3.263	1.752
1.75V/cell	101.0	72.0	56.1	46.6	34.7	25.6	20.91	11.98	9.06	7.34	6.04	5.21	4.12	3.343	1.772
1.70V/cell	111.2	78.4	59.8	49.0	36.1	26.6	21.62	12.28	9.31	7.53	6.19	5.32	4.17	3.413	1.802
1.67V/cell	122.6	84.6	63.6	52.1	38.1	27.3	22.13	12.48	9.71	7.80	6.36	5.44	4.24	3.483	1.822
1.60V/cell	135.2	91.9	68.0	55.5	40.3	28.4	22.33	12.99	10.01	8.04	6.58	5.56	4.28	3.524	1.832

恒功率放电表 (25°C/77°F) 单位: W															
F.V/Time	5min	10min	15min	20min	30min	45min	1h	2h	3h	4h	5h	6h	8h	10h	20h
1.85V/cell	122.0	94.6	79.2	69.2	54.1	40.1	34.03	20.22	15.92	12.91	10.61	9.22	7.47	6.256	3.433
1.80V/cell	162.0	119.5	94.4	80.6	62.9	46.3	37.84	21.92	17.02	13.71	11.31	9.85	7.90	6.436	3.463
1.75V/cell	178.8	129.2	101.8	85.9	64.7	47.6	39.44	22.62	17.22	14.01	11.61	10.11	8.02	6.607	3.493
1.70V/cell	191.4	137.6	107.2	89.5	67.0	49.3	40.54	23.22	17.72	14.41	11.81	10.31	8.12	6.727	3.554
1.67V/cell	208.1	147.1	113.1	94.4	70.1	50.2	41.14	23.42	18.42	14.81	12.11	10.51	8.23	6.857	3.604
1.60V/cell	224.2	156.2	119.0	99.5	73.5	52.0	41.34	24.22	18.82	15.22	12.51	10.71	8.29	6.917	3.614