

Motive Battery

Energy Storage Battery

Reserve Battery

Motorcycle Battery



Industry Battery-General Purpose AGM Battery-TN Series

TN12-40

(12V 40Ah)

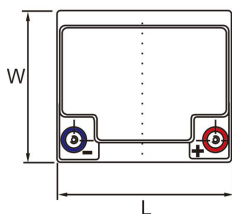
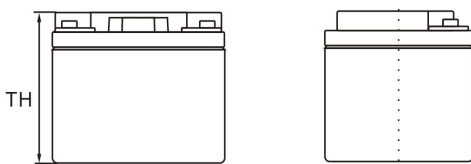
GENERAL FEATURES

- Oxygen recombination technology: maintenance-free, no need to add water or acid
- The patent grid alloy: less gassing, low self-discharge, excellent corrosion resistance
- Design life is 7~9 years at 25°C under standby application, deep discharge recoverability
- High quality AGM separator: extend cycle life and prevent micro short circuit
- ABS container: increase the strength of battery (Flame-retardant ABS UL94-V0 is optional)

Dimension

Unit:mm

Length	198.5±2mm / 7.81inch
Width	166±2mm / 6.54inch
Container Height	170±3mm / 6.69inch
Total Height	170±3mm / 6.69inch



Application

- Uninterrupted Power Supply (UPS)
- Communications and electric equipment
- Emergency lighting equipment
- Fire alarm and security system
- Robots, control equipment, and other factory automation equipment
- Emergency power supply (EPS)
- Portable VTR/TV, radio and so on
- Power tools, lawn mowers, vacuum cleaners
- Cameras and photographic equipment
- Portable measuring equipment
- Portable telephone sets
- Various power toys and hobby equipment
- Lighting equipment

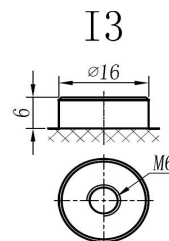
Terminal

Unit:mm

Terminal Type: I3

Weight

12.6kg 27.78lbs



This document is subject to change without prior notification

Motive Battery

Energy Storage Battery

Reserve Battery

Motorcycle Battery



TN12-40

Specificaion

Nominal Voltage	12V	
Rated Capacity(25°C)	42Ah	20hr Rate(1.80V/cell)
	40Ah	10hr Rate(1.80V/cell)
	35Ah	5hr Rate(1.75V/cell)
	33Ah	3hr Rate(1.70V/cell)
	25Ah	1hr Rate(1.60V/cell)
Container Material	ABS (Flame-retardant ABS UL94-V0 is optional)	
Operating Temperature Range	Discharge	-20 ~ +50°C
	Charge	0 ~ +40°C
	Storage	-15 ~ +40°C
Capacity Effected by Temperature	40°C / 104°F	106%
	25°C / 77°F	100%
	0°C / 32°F	86%
	-10°C / 14°F	65%
Charge	Float Voltage	2.23 -2.27V/cell@25°C, Tem.Coefficient : -3mV/cell/°C
	Equalize Voltage	2.35 -2.40V/cell@25°C, Tem.Coefficient : -3mV/cell/°C
	Cycle Voltage	2.40 -2.50V/cell@25°C, Tem.Coefficient : -5mV/cell/°C
Max. Charging Current	12A (0.3C)	
Max. Discharge Current (5S)	478A	
Internal Resistance	9.5mΩ	
Self-Discharge	<3%, TN series stored at 25 °C require a supplementary charge every six months, the charging interval would shrink when the ambient temperature went higher	

Discharge Performance

Constant Current Discharge Table (25°C/77°F) Unit: A

F.V/Time	5min	10min	15min	20min	30min	45min	1h	2h	3h	4h	5h	6h	8h	10h	20h
1.85V/cell	68.6	53.8	45.8	38.3	30.4	23.3	19.21	12.14	9.61	7.87	6.34	5.49	4.46	3.779	2.061
1.80V/cell	92.0	68.9	55.4	45.4	35.9	27.2	21.43	13.30	10.34	8.40	6.82	5.90	4.74	4.008	2.082
1.75V/cell	103.7	75.7	60.5	48.7	37.4	28.2	22.48	13.83	10.56	8.59	6.99	6.06	4.82	4.039	2.103
1.70V/cell	114.2	82.5	64.5	51.2	38.8	29.3	23.12	14.36	10.87	8.82	7.17	6.18	4.88	4.081	2.145
1.67V/cell	126.0	89.0	68.7	54.4	40.9	30.1	23.96	14.67	11.40	9.12	7.37	6.32	4.96	4.164	2.176
1.60V/cell	139.0	96.6	73.4	58.0	43.2	31.4	24.81	15.20	11.72	9.41	7.61	6.46	5.01	4.216	2.186

Constant Power Discharge Table (25°C/77°F) Unit: W

F.V/Time	5min	10min	15min	20min	30min	45min	1h	2h	3h	4h	5h	6h	8h	10h	20h
1.85V/cell	135.8	106.6	90.7	75.9	60.2	45.6	37.51	23.70	18.76	15.38	12.39	10.78	8.76	7.482	4.081
1.80V/cell	182.2	136.5	109.7	89.9	71.1	53.2	41.84	25.97	20.20	16.41	13.32	11.58	9.30	7.936	4.123
1.75V/cell	205.3	149.9	119.8	96.5	74.0	55.0	43.90	27.00	20.61	16.78	13.65	11.89	9.46	7.998	4.164
1.70V/cell	226.1	163.3	127.8	101.4	76.9	57.3	45.14	28.03	21.23	17.23	14.00	12.12	9.58	8.080	4.246
1.67V/cell	249.4	176.2	136.0	107.8	81.0	58.7	46.79	28.65	22.26	17.81	14.39	12.41	9.73	8.245	4.308
1.60V/cell	275.2	191.3	145.3	114.8	85.5	61.2	48.44	29.68	22.88	18.37	14.86	12.68	9.83	8.348	4.329

□ 动力电池

■ 储能电池

■ 备用电池

□ 摩托车电池



阀控式免维护铅酸蓄电池-通用型

TN12-40

(12V 40Ah)

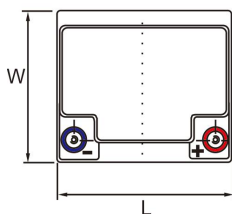
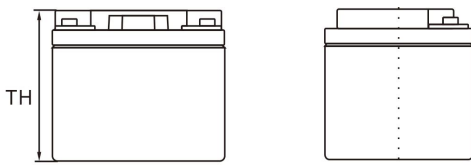
产品特点

- ◆ 阀控式免维护设计，寿命期间无需加水或加酸
- ◆ 专利稀土合金板栅，减少气体产生，自放电率低，抗腐蚀能力出众
- ◆ 在25°C下，产品浮充设计寿命为7~9年，优良的深放电恢复能力
- ◆ 高质量AGM隔板：防止微短路，延长循环寿命
- ◆ ABS壳盖：电池外壳强度高（阻燃壳体UL94-V0可选）

尺寸

单个尺寸

长	198.5±2mm
宽	166±2mm
高	170±3mm
总高	170±3mm



产品应用

- ◆ 不间断电源(UPS)
- ◆ 通信和电力设备
- ◆ 紧急照明设备
- ◆ 火灾报警及安防系统
- ◆ 机器人、控制设备及其他机械自动化设备
- ◆ 应急电源系统
- ◆ 便携式音频设备
- ◆ 电动工具，割草机，真空吸尘器
- ◆ 照相设备
- ◆ 便携式测量工具
- ◆ 便携式通话设备
- ◆ 各式电动玩具及娱乐设施
- ◆ 照明设备



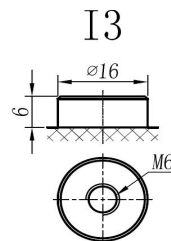
端子类型

单位:mm

端子类型 I3

重量

12.6kg 27.78lbs



内容如有改动，恕不另行通知

动力电池

储能电池

备用电池

摩托车电池



TN12-40

规格书

额定电压	12V	
容量(25°C)	42Ah	20hr Rate(1.80V/cell)
	40Ah	10hr Rate(1.80V/cell)
	35Ah	5hr Rate(1.75V/cell)
	33Ah	3hr Rate(1.70V/cell)
	25Ah	1hr Rate(1.60V/cell)
壳体材料	ABS (阻燃ABS壳体可选)	
使用温度范围	放电	-20 ~ +50°C
	充电	0 ~ +40°C
	储存	-15 ~ +40°C
不同温度下 电池容量系数	40°C / 104°F	106%
	25°C / 77°F	100%
	0°C / 32°F	86%
	-10°C / 14°F	65%
充电	浮充电压	2.23 -2.27V/单格@25°C, 温度补偿系数: -3mV/单格/°C
	均充电压	2.35 -2.40V/单格@25°C, 温度补偿系数: -3mV/单格/°C
	循环使用电压	2.40 -2.50V/单格@25°C, 温度补偿系数: -5mV/单格/°C
最大充电电流	12A (0.3C)	
最大放电电流 (5S)	478A	
电阻	9.5mΩ	
自放电	<3%, TN系列储存在25°C时需每6个月进行一次补充充电, 环境温度更高时则充电间隔时间越短	

放电性能

恒电流放电表 (25°C/77°F) 单位: A															
F.V/Time	5min	10min	15min	20min	30min	45min	1h	2h	3h	4h	5h	6h	8h	10h	20h
1.85V/cell	68.6	53.8	45.8	38.3	30.4	23.3	19.21	12.14	9.61	7.87	6.34	5.49	4.46	3.779	2.061
1.80V/cell	92.0	68.9	55.4	45.4	35.9	27.2	21.43	13.30	10.34	8.40	6.82	5.90	4.74	4.008	2.082
1.75V/cell	103.7	75.7	60.5	48.7	37.4	28.2	22.48	13.83	10.56	8.59	6.99	6.06	4.82	4.039	2.103
1.70V/cell	114.2	82.5	64.5	51.2	38.8	29.3	23.12	14.36	10.87	8.82	7.17	6.18	4.88	4.081	2.145
1.67V/cell	126.0	89.0	68.7	54.4	40.9	30.1	23.96	14.67	11.40	9.12	7.37	6.32	4.96	4.164	2.176
1.60V/cell	139.0	96.6	73.4	58.0	43.2	31.4	24.81	15.20	11.72	9.41	7.61	6.46	5.01	4.216	2.186

恒功率放电表 (25°C/77°F) 单位: W															
F.V/Time	5min	10min	15min	20min	30min	45min	1h	2h	3h	4h	5h	6h	8h	10h	20h
1.85V/cell	135.8	106.6	90.7	75.9	60.2	45.6	37.51	23.70	18.76	15.38	12.39	10.78	8.76	7.482	4.081
1.80V/cell	182.2	136.5	109.7	89.9	71.1	53.2	41.84	25.97	20.20	16.41	13.32	11.58	9.30	7.936	4.123
1.75V/cell	205.3	149.9	119.8	96.5	74.0	55.0	43.90	27.00	20.61	16.78	13.65	11.89	9.46	7.998	4.164
1.70V/cell	226.1	163.3	127.8	101.4	76.9	57.3	45.14	28.03	21.23	17.23	14.00	12.12	9.58	8.080	4.246
1.67V/cell	249.4	176.2	136.0	107.8	81.0	58.7	46.79	28.65	22.26	17.81	14.39	12.41	9.73	8.245	4.308
1.60V/cell	275.2	191.3	145.3	114.8	85.5	61.2	48.44	29.68	22.88	18.37	14.86	12.68	9.83	8.348	4.329