

Motive Battery

Energy Storage Battery

Reserve Battery

Motorcycle Battery



## Industry Battery-General Purpose AGM Battery-TN Series

# TN12-65E

(12V 65Ah)

### GENERAL FEATURES

- ♦ Oxygen recombination technology: maintenance-free, no need to add water or acid
- ♦ The patent grid alloy: less gassing, low self-discharge, excellent corrosion resistance
- ♦ Design life is 7~9 years at 25°C under standby application, deep discharge recoverability
- ♦ High quality AGM separator: extend cycle life and prevent micro short circuit
- ♦ ABS container: increase the strength of battery (Flame-retardant ABS UL94-V0 is optional)

### Dimension

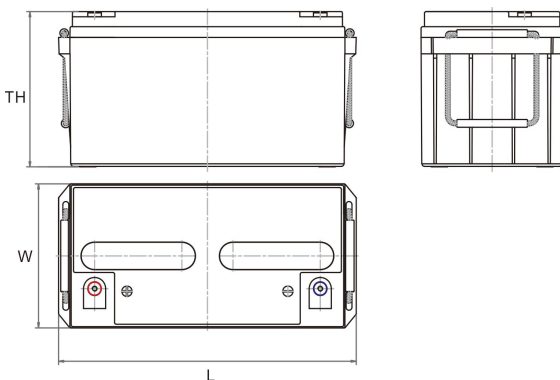
Unit:mm

Length 350±2mm / 13.78inch

Width 167±2mm / 6.57inch

Container Height 180±3mm / 7.09inch

Total Height 180±3mm / 7.09inch



### Application

- ♦ Uninterrupted Power Supply ( UPS )
- ♦ Communications and electric equipment
- ♦ Emergency lighting equipment
- ♦ Fire alarm and security system
- ♦ Robots, control equipment, and other factory automation equipment
- ♦ Emergency power supply ( EPS )
- ♦ Portable VTR/TV, radio and so on
- ♦ Power tools, lawn mowers, vacuum cleaners
- ♦ Cameras and photographic equipment
- ♦ Portable measuring equipment
- ♦ Portable telephone sets
- ♦ Various power toys and hobby equipment
- ♦ Lighting equipment

### Terminal

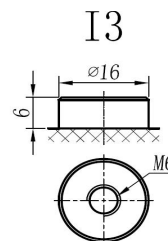
Unit:mm

Terminal Type: I3

### Weight

20.2kg

44.53lbs



This document is subject to change without prior notification

Motive Battery Energy Storage Battery Reserve Battery Motorcycle Battery

## TN12-65E

### Specificaion

<b>Nominal Voltage</b>	12V	
<b>Rated Capacity(25°C)</b>	65Ah	20hr Rate(1.80V/cell )
	62Ah	10hr Rate(1.80V/cell )
	54Ah	5hr Rate(1.75V/cell )
	48Ah	3hr Rate(1.70V/cell )
	38Ah	1hr Rate(1.60V/cell )
<b>Container Material</b>	ABS ( Flame-retardant ABS UL94-V0 is optional )	
<b>Operating Temperature Range</b>	<b>Discharge</b>	-20 ~ +50°C
	<b>Charge</b>	0 ~ +40°C
	<b>Storage</b>	-15 ~ +40°C
<b>Capacity Effected by Temperature</b>	<b>40°C / 104°F</b>	106%
	<b>25°C / 77°F</b>	100%
	<b>0°C / 32°F</b>	86%
	<b>-10°C / 14°F</b>	65%
<b>Charge</b>	<b>Float Voltage</b>	2.23 -2.27V/cell@25°C, Tem.Coefficient : -3mV/cell/°C
	<b>Equalize Voltage</b>	2.35 -2.40V/cell@25°C, Tem.Coefficient : -3mV/cell/°C
	<b>Cycle Voltage</b>	2.40 -2.50V/cell@25°C, Tem.Coefficient : -5mV/cell/°C
<b>Max. Charging Current</b>	18.75A ( 0.3C )	
<b>Max. Discharge Current (5S)</b>	780A	
<b>Internal Resistance</b>	7.3mΩ	
<b>Self-Discharge</b>	<3%, TN series stored at 25 °C require a supplementary charge every six months, the charging interval would shrink when the ambient temperature went higher	

### Discharge Performance

Constant Current Discharge Table (25°C/77°F) Unit: A

F.V/Time	5min	10min	15min	20min	30min	45min	1h	2h	3h	4h	5h	6h	8h	10h	20h
1.85V/cell	114.1	87.7	75.6	65.7	50.9	38.4	31.06	18.78	14.41	11.96	10.19	8.88	7.18	5.986	3.203
1.80V/cell	142.8	102.6	86.0	73.9	55.8	41.4	33.19	20.00	15.12	12.53	10.63	9.25	7.47	6.216	3.253
1.75V/cell	161.1	111.9	93.9	79.1	58.8	43.4	34.71	20.71	15.53	12.84	10.88	9.44	7.59	6.276	3.293
1.70V/cell	177.3	120.8	100.2	83.0	61.5	45.0	36.13	21.42	16.04	13.15	11.13	9.63	7.70	6.336	3.323
1.67V/cell	194.0	130.1	105.2	86.2	63.4	46.5	37.15	21.92	16.44	13.43	11.35	9.80	7.81	6.406	3.373
1.60V/cell	210.3	138.3	109.4	89.5	65.1	48.1	38.06	22.43	16.85	13.69	11.55	9.94	7.91	6.486	3.383

Constant Power Discharge Table (25°C/77°F) Unit: W

F.V/Time	5min	10min	15min	20min	30min	45min	1h	2h	3h	4h	5h	6h	8h	10h	20h
1.85V/cell	208.7	161.9	141.0	123.7	96.9	72.8	59.16	35.94	27.73	23.02	19.72	17.30	14.05	11.842	6.346
1.80V/cell	258.4	187.2	158.3	137.1	104.7	78.0	62.86	37.94	29.03	24.02	20.42	17.95	14.57	12.282	6.436
1.75V/cell	285.1	201.0	170.7	145.4	109.4	81.0	65.37	39.34	29.63	24.52	20.92	18.26	14.75	12.392	6.507
1.70V/cell	305.2	212.1	179.7	151.6	113.7	83.5	67.77	40.44	30.43	25.13	21.32	18.60	14.95	12.502	6.567
1.67V/cell	329.1	226.4	187.1	156.2	116.4	85.5	69.17	41.24	31.13	25.53	21.62	18.86	15.15	12.623	6.647
1.60V/cell	348.7	235.2	191.4	160.5	118.5	88.0	70.57	41.94	31.63	25.93	21.92	19.09	15.32	12.753	6.667

动力电池

储能电池

备用电池

摩托车电池



## 阀控式免维护铅酸蓄电池-通用型

# TN12-65E

(12V 65Ah)

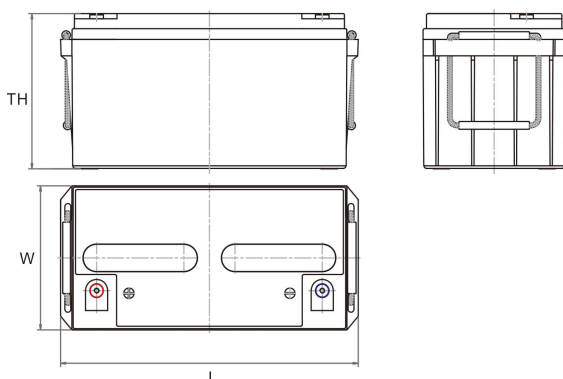
### 产品特点

- ◆ 阀控式免维护设计，寿命期间无需加水或加酸
- ◆ 专利稀土合金板栅，减少气体产生，自放电率低，抗腐蚀能力出众
- ◆ 在25°C下，产品浮充设计寿命为7~9年，优良的深放电恢复能力
- ◆ 高质量AGM隔板：防止微短路，延长循环寿命
- ◆ ABS壳盖：电池外壳强度高（阻燃壳体UL94-V0可选）

### 尺寸

单个尺寸

长	350±2mm
宽	167±2mm
高	180±3mm
总高	180±3mm



### 产品应用

- ◆ 不间断电源(UPS)
- ◆ 通信和电力设备
- ◆ 紧急照明设备
- ◆ 火灾报警及安防系统
- ◆ 机器人、控制设备及其他机械自动化设备
- ◆ 应急电源系统
- ◆ 便携式音频设备
- ◆ 电动工具，割草机，真空吸尘器
- ◆ 照相设备
- ◆ 便携式测量工具
- ◆ 便携式通话设备
- ◆ 各式电动玩具及娱乐设施
- ◆ 照明设备

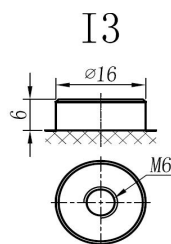
### 端子类型

单位:mm

端子类型 I3

### 重量

20.2kg 44.53lbs



内容如有改动，恕不另行通知

动力电池

储能电池

备用电池

摩托车电池



## TN12-65E

### 规格书

额定电压	12V	
容量(25°C)	65Ah	20hr Rate(1.80V/cell)
	62Ah	10hr Rate(1.80V/cell)
	54Ah	5hr Rate(1.75V/cell)
	48Ah	3hr Rate(1.70V/cell)
	38Ah	1hr Rate(1.60V/cell)
壳体材料	ABS (阻燃ABS壳体可选)	
使用温度范围	放电	-20 ~ +50°C
	充电	0 ~ +40°C
	储存	-15 ~ +40°C
不同温度下 电池容量系数	40°C / 104°F	106%
	25°C / 77°F	100%
	0°C / 32°F	86%
	-10°C / 14°F	65%
充电	浮充电压	2.23 - 2.27V/单格@25°C, 温度补偿系数: -3mV/单格/°C
	均充电压	2.35 - 2.40V/单格@25°C, 温度补偿系数: -3mV/单格/°C
	循环使用电压	2.40 - 2.50V/单格@25°C, 温度补偿系数: -5mV/单格/°C
最大充电电流	18.75A (0.3C)	
最大放电电流 (5S)	780A	
电阻	7.3mΩ	
自放电	<3%, TN系列储存在25°C时需每6个月进行一次补充充电, 环境温度更高时则充电间隔时间越短	

### 放电性能

恒电流放电表 (25°C/77°F) 单位: A															
F.V/Time	5min	10min	15min	20min	30min	45min	1h	2h	3h	4h	5h	6h	8h	10h	20h
1.85V/cell	114.1	87.7	75.6	65.7	50.9	38.4	31.06	18.78	14.41	11.96	10.19	8.88	7.18	5.986	3.203
1.80V/cell	142.8	102.6	86.0	73.9	55.8	41.4	33.19	20.00	15.12	12.53	10.63	9.25	7.47	6.216	3.253
1.75V/cell	161.1	111.9	93.9	79.1	58.8	43.4	34.71	20.71	15.53	12.84	10.88	9.44	7.59	6.276	3.293
1.70V/cell	177.3	120.8	100.2	83.0	61.5	45.0	36.13	21.42	16.04	13.15	11.13	9.63	7.70	6.336	3.323
1.67V/cell	194.0	130.1	105.2	86.2	63.4	46.5	37.15	21.92	16.44	13.43	11.35	9.80	7.81	6.406	3.373
1.60V/cell	210.3	138.3	109.4	89.5	65.1	48.1	38.06	22.43	16.85	13.69	11.55	9.94	7.91	6.486	3.383

恒功率放电表 (25°C/77°F) 单位: W															
F.V/Time	5min	10min	15min	20min	30min	45min	1h	2h	3h	4h	5h	6h	8h	10h	20h
1.85V/cell	208.7	161.9	141.0	123.7	96.9	72.8	59.16	35.94	27.73	23.02	19.72	17.30	14.05	11.842	6.346
1.80V/cell	258.4	187.2	158.3	137.1	104.7	78.0	62.86	37.94	29.03	24.02	20.42	17.95	14.57	12.282	6.436
1.75V/cell	285.1	201.0	170.7	145.4	109.4	81.0	65.37	39.34	29.63	24.52	20.92	18.26	14.75	12.392	6.507
1.70V/cell	305.2	212.1	179.7	151.6	113.7	83.5	67.77	40.44	30.43	25.13	21.32	18.60	14.95	12.502	6.567
1.67V/cell	329.1	226.4	187.1	156.2	116.4	85.5	69.17	41.24	31.13	25.53	21.62	18.86	15.15	12.623	6.647
1.60V/cell	348.7	235.2	191.4	160.5	118.5	88.0	70.57	41.94	31.63	25.93	21.92	19.09	15.32	12.753	6.667