

Motive Battery

Energy Storage Battery

Reserve Battery

Motorcycle Battery



Industry Battery-General Purpose AGM Battery-TN Series

TN12-70

(12V 70Ah)

GENERAL FEATURES

- ♦ Oxygen recombination technology: maintenance-free, no need to add water or acid
- ♦ The patent grid alloy: less gassing, low self-discharge, excellent corrosion resistance
- ♦ Design life is 7~9 years at 25°C under standby application, deep discharge recoverability
- ♦ High quality AGM separator: extend cycle life and prevent micro short circuit
- ♦ ABS container: increase the strength of battery (Flame-retardant ABS UL94-V0 is optional)

Dimension

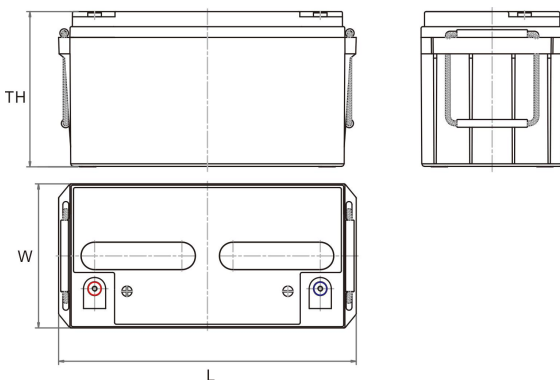
Unit:mm

Length 348±2mm / 13.7inch

Width 167±2mm / 6.57inch

Container Height 178±3mm / 7.01inch

Total Height 178±3mm / 7.01inch



Application

- ♦ Uninterrupted Power Supply (UPS)
- ♦ Communications and electric equipment
- ♦ Emergency lighting equipment
- ♦ Fire alarm and security system
- ♦ Robots, control equipment, and other factory automation equipment
- ♦ Emergency power supply (EPS)
- ♦ Portable VTR/TV, radio and so on
- ♦ Power tools, lawn mowers, vacuum cleaners
- ♦ Cameras and photographic equipment
- ♦ Portable measuring equipment
- ♦ Portable telephone sets
- ♦ Various power toys and hobby equipment
- ♦ Lighting equipment

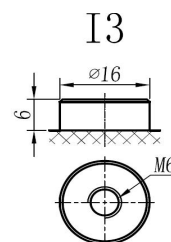
Terminal

Unit:mm

Terminal Type: I3

Weight

21.6kg 47.62lbs



This document is subject to change without prior notification

Motive Battery

Energy Storage Battery

Reserve Battery

Motorcycle Battery



TN12-70

Specificaion

Nominal Voltage	12V	
Rated Capacity(25°C)	73Ah	20hr Rate(1.80V/cell)
	70Ah	10hr Rate(1.80V/cell)
	61Ah	5hr Rate(1.75V/cell)
	57Ah	3hr Rate(1.70V/cell)
	43Ah	1hr Rate(1.60V/cell)
Container Material	ABS (Flame-retardant ABS UL94-V0 is optional)	
Operating Temperature Range	Discharge	-20 ~ +50°C
	Charge	0 ~ +40°C
	Storage	-15 ~ +40°C
Capacity Effected by Temperature	40°C / 104°F	106%
	25°C / 77°F	100%
	0°C / 32°F	86%
	-10°C / 14°F	65%
Charge	Float Voltage	2.23 -2.27V/cell@25°C, Tem.Coefficient : -3mV/cell/°C
	Equalize Voltage	2.35 -2.40V/cell@25°C, Tem.Coefficient : -3mV/cell/°C
	Cycle Voltage	2.40 -2.50V/cell@25°C, Tem.Coefficient : -5mV/cell/°C
Max. Charging Current	21A (0.3C)	
Max. Discharge Current (5S)	840A	
Internal Resistance	6.6mΩ	
Self-Discharge	<3%, TN series stored at 25 °C require a supplementary charge every six months, the charging interval would shrink when the ambient temperature went higher	

Discharge Performance

Constant Current Discharge Table (25°C/77°F) Unit: A

F.V/Time	5min	10min	15min	20min	30min	45min	1h	2h	3h	4h	5h	6h	8h	10h	20h
1.85V/cell	119.9	94.3	80.2	67.1	53.3	40.9	33.50	21.32	16.85	13.80	11.06	9.63	7.82	6.617	3.614
1.80V/cell	161.0	120.5	96.9	79.3	62.9	47.6	37.56	23.24	18.17	14.72	11.88	10.30	8.28	7.007	3.644
1.75V/cell	181.5	132.3	105.8	85.3	65.3	49.3	39.28	24.16	18.47	15.02	12.18	10.61	8.42	7.077	3.684
1.70V/cell	199.9	144.2	113.0	89.6	68.0	51.4	40.50	25.07	18.98	15.43	12.59	10.81	8.54	7.147	3.754
1.67V/cell	220.4	155.8	120.1	95.2	71.7	52.6	41.82	25.78	19.79	15.94	12.89	11.11	8.69	7.297	3.794
1.60V/cell	243.0	169.1	128.4	101.4	75.7	54.8	43.34	26.69	20.40	16.44	13.30	11.31	8.77	7.367	3.824

Constant Power Discharge Table (25°C/77°F) Unit: W

F.V/Time	5min	10min	15min	20min	30min	45min	1h	2h	3h	4h	5h	6h	8h	10h	20h
1.85V/cell	219.3	174.2	149.6	126.4	101.6	77.6	63.66	40.84	32.43	26.53	21.42	18.72	15.32	13.013	7.147
1.80V/cell	291.2	219.9	178.4	147.2	118.0	89.5	70.97	44.24	34.73	28.23	22.92	20.02	16.12	13.814	7.207
1.75V/cell	321.3	237.7	192.4	156.9	121.5	92.0	73.97	45.75	35.24	28.73	23.52	20.52	16.42	13.914	7.267
1.70V/cell	344.0	253.3	202.6	163.7	125.8	95.3	75.98	47.45	36.14	29.43	24.02	20.92	16.62	14.114	7.397
1.67V/cell	374.0	270.9	213.7	172.6	131.6	96.8	77.98	48.55	37.44	30.33	24.62	21.32	16.82	14.314	7.487
1.60V/cell	403.0	287.4	224.8	181.8	137.9	100.3	80.38	49.95	38.44	31.23	25.33	21.72	17.02	14.515	7.518

动力电池

储能电池

备用电池

摩托车电池



阀控式免维护铅酸蓄电池-通用型

TN12-70

(12V 70Ah)

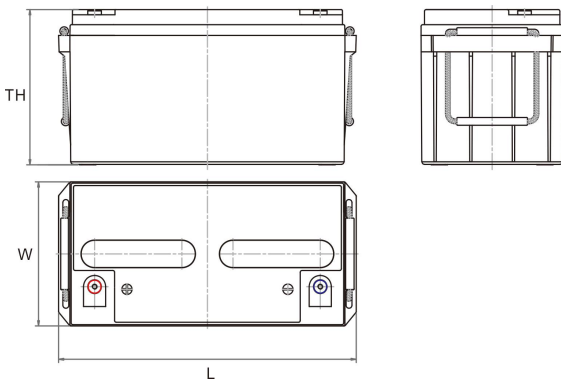
产品特点

- ◆ 阀控式免维护设计，寿命期间无需加水或加酸
- ◆ 专利稀土合金板栅，减少气体产生，自放电率低，抗腐蚀能力出众
- ◆ 在25°C下，产品浮充设计寿命为7~9年，优良的深放电恢复能力
- ◆ 高质量AGM隔板：防止微短路，延长循环寿命
- ◆ ABS壳盖：电池外壳强度高（阻燃壳体UL94-V0可选）

尺寸

单个尺寸

长	348±2mm
宽	167±2mm
高	178±3mm
总高	178±3mm



产品应用

- ◆ 不间断电源(UPS)
- ◆ 通信和电力设备
- ◆ 紧急照明设备
- ◆ 火灾报警及安防系统
- ◆ 机器人、控制设备及其他机械自动化设备
- ◆ 应急电源系统
- ◆ 便携式音频设备
- ◆ 电动工具，割草机，真空吸尘器
- ◆ 照相设备
- ◆ 便携式测量工具
- ◆ 便携式通话设备
- ◆ 各式电动玩具及娱乐设施
- ◆ 照明设备

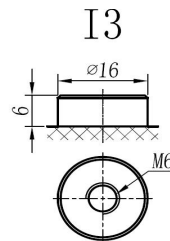
端子类型

单位:mm

端子类型 I3

重量

21.6kg 47.62lbs



ISO9001 ISO14001 OHSAS18001

内容如有改动，恕不另行通知

动力电池

储能电池

备用电池

摩托车电池



TN12-70

规格书

额定电压	12V	
容量(25°C)	73Ah	20hr Rate(1.80V/cell)
	70Ah	10hr Rate(1.80V/cell)
	61Ah	5hr Rate(1.75V/cell)
	57Ah	3hr Rate(1.70V/cell)
	43Ah	1hr Rate(1.60V/cell)
壳体材料	ABS (阻燃ABS壳体可选)	
使用温度范围	放电	-20 ~ +50°C
	充电	0 ~ +40°C
	储存	-15 ~ +40°C
不同温度下 电池容量系数	40°C / 104°F	106%
	25°C / 77°F	100%
	0°C / 32°F	86%
	-10°C / 14°F	65%
充电	浮充电压	2.23 -2.27V/单格@25°C, 温度补偿系数: -3mV/单格/°C
	均充电压	2.35 -2.40V/单格@25°C, 温度补偿系数: -3mV/单格/°C
	循环使用电压	2.40 -2.50V/单格@25°C, 温度补偿系数: -5mV/单格/°C
最大充电电流	21A (0.3C)	
最大放电电流 (5S)	840A	
电阻	6.6mΩ	
自放电	<3%, TN系列储存在25°C 时需每6个月进行一次补充充电, 环境温度更高时则充电间隔时间越短	

放电性能

恒电流放电表 (25°C/77°F) 单位: A															
F.V/Time	5min	10min	15min	20min	30min	45min	1h	2h	3h	4h	5h	6h	8h	10h	20h
1.85V/cell	119.9	94.3	80.2	67.1	53.3	40.9	33.50	21.32	16.85	13.80	11.06	9.63	7.82	6.617	3.614
1.80V/cell	161.0	120.5	96.9	79.3	62.9	47.6	37.56	23.24	18.17	14.72	11.88	10.30	8.28	7.007	3.644
1.75V/cell	181.5	132.3	105.8	85.3	65.3	49.3	39.28	24.16	18.47	15.02	12.18	10.61	8.42	7.077	3.684
1.70V/cell	199.9	144.2	113.0	89.6	68.0	51.4	40.50	25.07	18.98	15.43	12.59	10.81	8.54	7.147	3.754
1.67V/cell	220.4	155.8	120.1	95.2	71.7	52.6	41.82	25.78	19.79	15.94	12.89	11.11	8.69	7.297	3.794
1.60V/cell	243.0	169.1	128.4	101.4	75.7	54.8	43.34	26.69	20.40	16.44	13.30	11.31	8.77	7.367	3.824

恒功率放电表 (25°C/77°F) 单位: W															
F.V/Time	5min	10min	15min	20min	30min	45min	1h	2h	3h	4h	5h	6h	8h	10h	20h
1.85V/cell	219.3	174.2	149.6	126.4	101.6	77.6	63.66	40.84	32.43	26.53	21.42	18.72	15.32	13.013	7.147
1.80V/cell	291.2	219.9	178.4	147.2	118.0	89.5	70.97	44.24	34.73	28.23	22.92	20.02	16.12	13.814	7.207
1.75V/cell	321.3	237.7	192.4	156.9	121.5	92.0	73.97	45.75	35.24	28.73	23.52	20.52	16.42	13.914	7.267
1.70V/cell	344.0	253.3	202.6	163.7	125.8	95.3	75.98	47.45	36.14	29.43	24.02	20.92	16.62	14.114	7.397
1.67V/cell	374.0	270.9	213.7	172.6	131.6	96.8	77.98	48.55	37.44	30.33	24.62	21.32	16.82	14.314	7.487
1.60V/cell	403.0	287.4	224.8	181.8	137.9	100.3	80.38	49.95	38.44	31.23	25.33	21.72	17.02	14.515	7.518