

Motive Battery

Energy Storage Battery

Reserve Battery

Motorcycle Battery



Industry Battery-General Purpose AGM Battery-TN Series

TN12-95Z

(12V 95Ah)

GENERAL FEATURES

- Oxygen recombination technology: maintenance-free, no need to add water or acid
- The patent grid alloy: less gassing, low self-discharge, excellent corrosion resistance
- Design life is 7~9 years at 25°C under standby application, deep discharge recoverability
- High quality AGM separator: extend cycle life and prevent micro short circuit
- ABS container: increase the strength of battery (Flame-retardant ABS UL94-V0 is optional)

Dimension

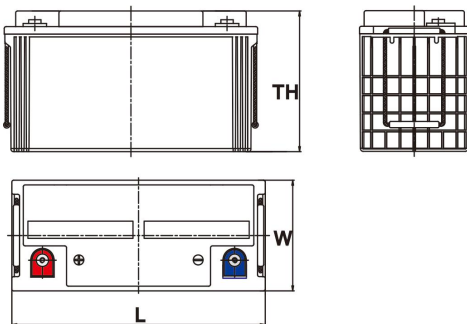
Unit:mm

Length 408±2mm / 16.06inch

Width 177±2mm / 6.97inch

Container Height 224±3mm / 8.82inch

Total Height 224±3mm / 8.82inch



Application

- Uninterrupted Power Supply (UPS)
- Communications and electric equipment
- Emergency lighting equipment
- Fire alarm and security system
- Robots, control equipment, and other factory automation equipment
- Emergency power supply (EPS)
- Portable VTR/TV, radio and so on
- Power tools, lawn mowers, vacuum cleaners
- Cameras and photographic equipment
- Portable measuring equipment
- Portable telephone sets
- Various power toys and hobby equipment
- Lighting equipment

Terminal

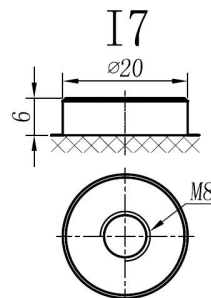
Unit:mm

Terminal Type: I7

Weight

30.5kg

67.24lbs



This document is subject to change without prior notification

Motive Battery

Energy Storage Battery

Reserve Battery

Motorcycle Battery



TN12-95Z

Specificaion

Nominal Voltage	12V	
Rated Capacity(25°C)	100Ah	20hr Rate(1.80V/cell)
	95Ah	10hr Rate(1.80V/cell)
	83Ah	5hr Rate(1.75V/cell)
	77Ah	3hr Rate(1.70V/cell)
	59Ah	1hr Rate(1.60V/cell)
Container Material	ABS (Flame-retardant ABS UL94-V0 is optional)	
Operating Temperature Range	Discharge	-20 ~ +50°C
	Charge	0 ~ +40°C
	Storage	-15 ~ +40°C
Capacity Effected by Temperature	40°C / 104°F	106%
	25°C / 77°F	100%
	0°C / 32°F	86%
	-10°C / 14°F	65%
Charge	Float Voltage	2.23 -2.27V/cell@25°C, Tem.Coefficient : -3mV/cell/°C
	Equalize Voltage	2.35 -2.40V/cell@25°C, Tem.Coefficient : -3mV/cell/°C
	Cycle Voltage	2.40 -2.50V/cell@25°C, Tem.Coefficient : -5mV/cell/°C
Max. Charging Current	28.5A (0.3C)	
Max. Discharge Current (5S)	1140A	
Internal Resistance	4.95mΩ	
Self-Discharge	<3%, TN series stored at 25 °C require a supplementary charge every six months, the charging interval would shrink when the ambient temperature went higher	

Discharge Performance

Constant Current Discharge Table (25°C/77°F) Unit: A

F.V/Time	5min	10min	15min	20min	30min	45min	1h	2h	3h	4h	5h	6h	8h	10h	20h
1.85V/cell	162.7	127.9	108.8	91.0	72.3	55.5	45.43	28.94	22.88	18.69	15.06	13.05	10.60	8.978	4.957
1.80V/cell	218.4	163.4	131.4	107.5	85.3	64.5	50.90	31.58	24.62	19.96	16.18	14.00	11.24	9.511	5.005
1.75V/cell	246.2	179.6	143.5	115.7	88.6	67.0	53.25	32.76	25.08	20.40	16.58	14.38	11.43	9.606	5.053
1.70V/cell	271.1	195.7	153.2	121.6	92.2	69.6	54.92	34.06	25.78	20.94	17.02	14.68	11.59	9.701	5.149
1.67V/cell	299.0	211.2	162.9	129.2	97.2	71.4	56.77	35.01	26.87	21.66	17.49	15.01	11.78	9.900	5.217
1.60V/cell	329.7	229.3	174.3	137.6	102.7	74.4	58.79	36.19	27.70	22.34	18.07	15.33	11.89	10.005	5.246

Constant Power Discharge Table (25°C/77°F) Unit: W

F.V/Time	5min	10min	15min	20min	30min	45min	1h	2h	3h	4h	5h	6h	8h	10h	20h
1.85V/cell	297.4	236.2	202.9	171.5	137.8	105.2	86.42	55.43	43.98	36.03	29.12	25.43	20.74	17.756	9.697
1.80V/cell	395.0	298.3	241.9	199.7	160.1	121.4	96.30	60.08	47.07	38.28	31.14	27.17	21.93	18.780	9.776
1.75V/cell	435.9	322.5	261.0	212.8	164.9	124.8	100.29	62.09	47.75	38.99	31.85	27.83	22.25	18.945	9.858
1.70V/cell	466.7	343.6	274.8	222.0	170.6	129.3	103.12	64.42	48.99	39.95	32.59	28.36	22.55	19.120	10.040
1.67V/cell	507.3	367.4	289.9	234.0	178.5	131.3	105.82	65.83	50.84	41.17	33.38	28.90	22.84	19.482	10.159
1.60V/cell	546.6	389.8	304.9	246.6	187.2	136.1	109.00	67.72	52.17	42.32	34.36	29.44	23.02	19.655	10.199

☐ 动力电池

■ 储能电池

■ 备用电池

☐ 摩托车电池



阀控式免维护铅酸蓄电池-通用型

TN12-95Z

(12V 95Ah)

产品特点

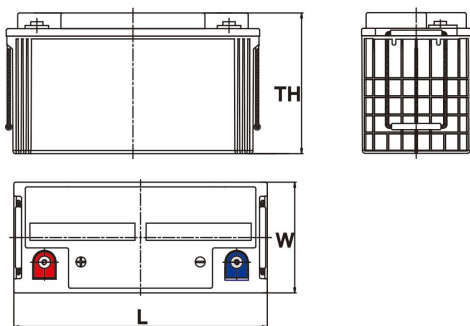
- ◆ 阀控式免维护设计，寿命期间无需加水或加酸
- ◆ 专利稀土合金板栅，减少气体产生，自放电率低，抗腐蚀能力出众
- ◆ 在25°C下，产品浮充设计寿命为7~9年，优良的深放电恢复能力
- ◆ 高质量AGM隔板：防止微短路，延长循环寿命
- ◆ ABS壳盖：电池外壳强度高（阻燃壳体UL94-V0可选）



尺寸

单个尺寸

长	408±2mm
宽	177±2mm
高	224±3mm
总高	224±3mm



产品应用

- ◆ 不间断电源(UPS)
- ◆ 通信和电力设备
- ◆ 紧急照明设备
- ◆ 火灾报警及安防系统
- ◆ 机器人、控制设备及其他机械自动化设备
- ◆ 应急电源系统
- ◆ 便携式音频设备
- ◆ 电动工具，割草机，真空吸尘器
- ◆ 照相设备
- ◆ 便携式测量工具
- ◆ 便携式通话设备
- ◆ 各式电动玩具及娱乐设施
- ◆ 照明设备

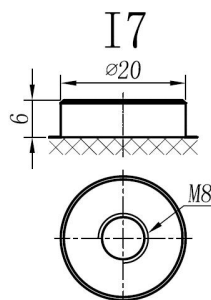
端子类型

单位:mm

端子类型 I7

重量

30.5kg 67.24lbs



内容如有改动，恕不另行通知



ISO9001 ISO14001 OHSAS18001

天能电池集团有限公司

长兴天能进出口有限公司

www.tiannenggroup.com

版本：

V1.0

发行日期：

2016/7/1

©2016 天能集团 版权所有，保留一切权利；商标所有权属于天能集团及其附属机构

浙江省长兴画溪工业区包桥路18号天能集团 邮编：313199

动力电池

储能电池

备用电池

摩托车电池



TN12-95Z

规格书

额定电压	12V	
容量(25°C)	100Ah	20hr Rate(1.80V/cell)
	95Ah	10hr Rate(1.80V/cell)
	83Ah	5hr Rate(1.75V/cell)
	77Ah	3hr Rate(1.70V/cell)
	59Ah	1hr Rate(1.60V/cell)
壳体材料	ABS (阻燃ABS壳体可选)	
使用温度范围	放电	-20 ~ +50°C
	充电	0 ~ +40°C
	储存	-15 ~ +40°C
不同温度下 电池容量系数	40°C / 104°F	106%
	25°C / 77°F	100%
	0°C / 32°F	86%
	-10°C / 14°F	65%
充电	浮充电压	2.23 -2.27V/单格@25°C, 温度补偿系数: -3mV/单格/°C
	均充电压	2.35 -2.40V/单格@25°C, 温度补偿系数: -3mV/单格/°C
	循环使用电压	2.40 -2.50V/单格@25°C, 温度补偿系数: -5mV/单格/°C
最大充电电流	28.5A (0.3C)	
最大放电电流 (5S)	1140A	
电阻	4.95mΩ	
自放电	<3%, TN系列储存在25°C时需每6个月进行一次补充充电, 环境温度更小时则充电间隔时间越短	

放电性能

恒电流放电表 (25°C/77°F) 单位: A															
F.V/Time	5min	10min	15min	20min	30min	45min	1h	2h	3h	4h	5h	6h	8h	10h	20h
1.85V/cell	162.7	127.9	108.8	91.0	72.3	55.5	45.43	28.94	22.88	18.69	15.06	13.05	10.60	8.978	4.957
1.80V/cell	218.4	163.4	131.4	107.5	85.3	64.5	50.90	31.58	24.62	19.96	16.18	14.00	11.24	9.511	5.005
1.75V/cell	246.2	179.6	143.5	115.7	88.6	67.0	53.25	32.76	25.08	20.40	16.58	14.38	11.43	9.606	5.053
1.70V/cell	271.1	195.7	153.2	121.6	92.2	69.6	54.92	34.06	25.78	20.94	17.02	14.68	11.59	9.701	5.149
1.67V/cell	299.0	211.2	162.9	129.2	97.2	71.4	56.77	35.01	26.87	21.66	17.49	15.01	11.78	9.900	5.217
1.60V/cell	329.7	229.3	174.3	137.6	102.7	74.4	58.79	36.19	27.70	22.34	18.07	15.33	11.89	10.005	5.246

恒功率放电表 (25°C/77°F) 单位: W															
F.V/Time	5min	10min	15min	20min	30min	45min	1h	2h	3h	4h	5h	6h	8h	10h	20h
1.85V/cell	297.4	236.2	202.9	171.5	137.8	105.2	86.42	55.43	43.98	36.03	29.12	25.43	20.74	17.756	9.697
1.80V/cell	395.0	298.3	241.9	199.7	160.1	121.4	96.30	60.08	47.07	38.28	31.14	27.17	21.93	18.780	9.776
1.75V/cell	435.9	322.5	261.0	212.8	164.9	124.8	100.29	62.09	47.75	38.99	31.85	27.83	22.25	18.945	9.858
1.70V/cell	466.7	343.6	274.8	222.0	170.6	129.3	103.12	64.42	48.99	39.95	32.59	28.36	22.55	19.120	10.040
1.67V/cell	507.3	367.4	289.9	234.0	178.5	131.3	105.82	65.83	50.84	41.17	33.38	28.90	22.84	19.482	10.159
1.60V/cell	546.6	389.8	304.9	246.6	187.2	136.1	109.00	67.72	52.17	42.32	34.36	29.44	23.02	19.655	10.199