

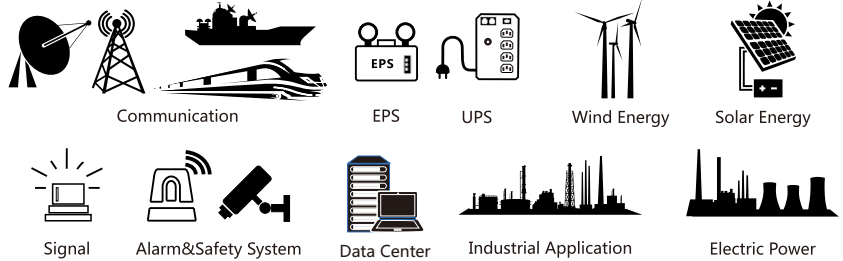
TN2-300 [2V 300Ah]



Product Features

General Purpose (AGM)		10~12 years of design life@25°C	
100% Model Coverage Both Cycle & Float Application	↑98% Capacity Retention High Purity Electrolyte	↑20% Charge Acceptance Special Negative Additive	↓50% Grid Corrosion Rare-earth patent alloy

Product Applications



Physical Specifications

Model	Dimensions (mm/inch)				Weight (kg/lbs)	Terminal	Container
	Length	Width	Height	Total Height			
TN2-300	171/6.73	150/5.91	328/12.9	350/13.8	18.0/39.7	I7	ABS UL94-HB (Optional: FR ABS UL94-V0)

Product Specifications

Nominal Voltage	Rated Capacity@25°C/77°F	Internal Resistance	Max. Discharge Current	Operating Temp. Range
2V	320Ah 20hr Rate (1.80V/cell) 300Ah 10hr Rate (1.80V/cell) 263Ah 5hr Rate (1.75V/cell) 239Ah 3hr Rate (1.70V/cell)	0.6mΩ@25°C/77°F	1860A (5s)	Discharge:-15~50°C (5~122°F) Charge:0~40°C (32~104°F) Storage:-15~40°C (5~104°F) Optimum:25±2°C (77±4°F)

Constant Current Discharge (A)@25°C (77°F)

F.V/Time	5min	10min	15min	20min	30min	45min	1h	2h	3h	4h	5h	6h	8h	10h	20h
1.85V/cell	410	347	317	293	245	202	169	101	73.6	59.3	50.0	43.6	35.3	29.2	15.7
1.80V/cell	504	394	354	316	261	210	177	105	76.6	61.1	51.4	44.9	36.1	30.0	16.0
1.75V/cell	605	439	384	336	274	220	184	108	78.4	62.3	52.6	45.9	36.6	30.5	16.2
1.70V/cell	662	481	412	355	287	228	188	110	79.6	63.5	53.4	46.6	37.1	30.8	16.5
1.67V/cell	745	524	433	374	299	235	194	112	80.8	64.7	54.3	47.2	37.6	31.3	16.8
1.60V/cell	846	572	466	396	313	243	199	114	82.3	65.6	55.2	47.8	38.1	31.6	17.1

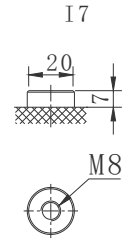
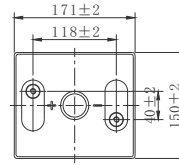
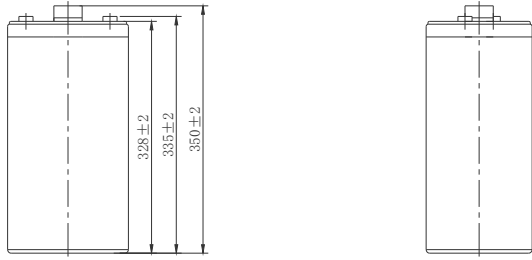
Constant Power Discharge (W/cell)@25°C (77°F)

F.V/Time	5min	10min	15min	20min	30min	45min	1h	2h	3h	4h	5h	6h	8h	10h	20h
1.85V/cell	764	658	608	567	483	400	336	203	149	120	102	89.1	72.4	60.0	32.3
1.80V/cell	936	744	677	611	512	416	352	211	154	124	104	91.4	73.8	61.4	32.8
1.75V/cell	1122	826	731	647	535	434	364	215	157	126	107	93.3	74.8	62.3	33.2
1.70V/cell	1227	902	782	680	559	449	372	218	159	128	108	94.4	75.4	62.7	33.7
1.67V/cell	1376	979	820	715	581	462	381	222	161	130	109	95.3	76.2	63.5	34.2
1.60V/cell	1555	1065	878	754	606	475	391	225	164	131	111	96.2	76.9	63.8	34.8

TN2-300 [2V 300Ah]

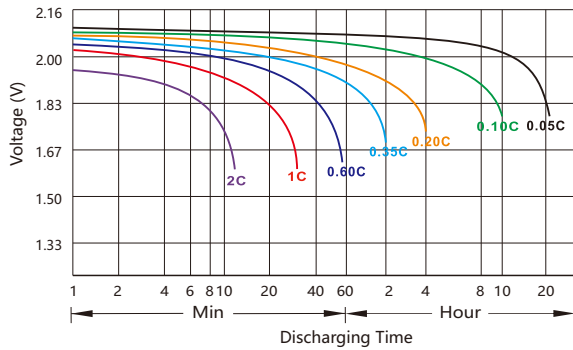


Battery Dimensions(mm)

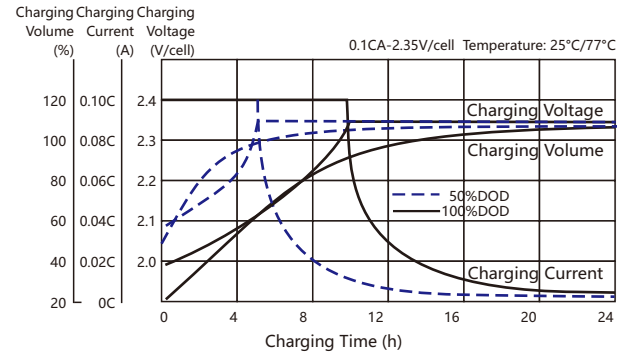


Electrical Characteristics

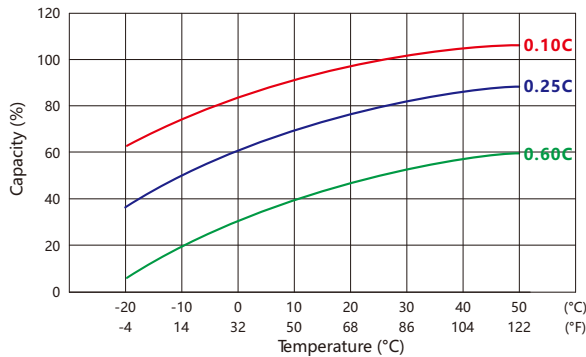
Discharging Characteristics(25°C)



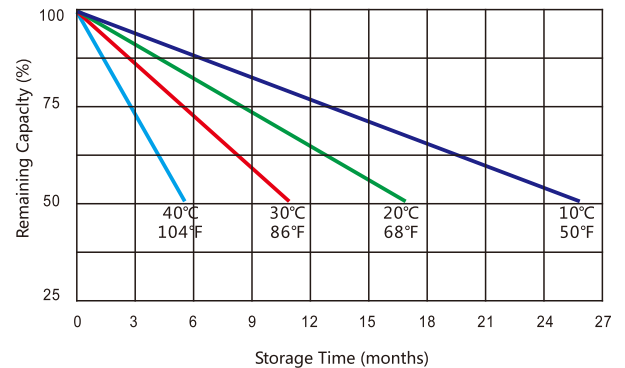
Charging Characteristics(25°C)



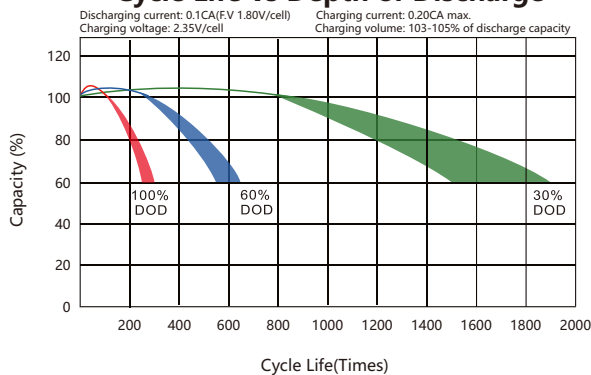
Capacity vs Temperature



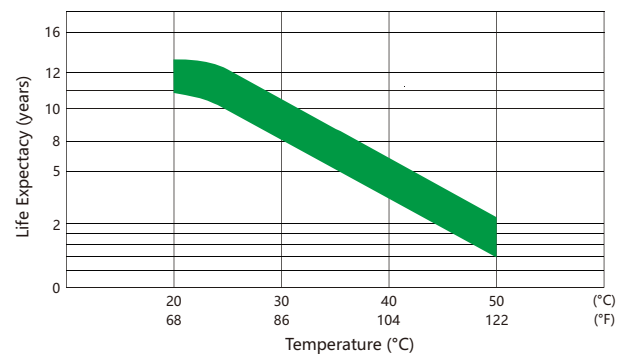
Self-discharge vs Time



Cycle Life vs Depth of Discharge



Floating Life vs Temperature



Usage and Maintenance

Charge Current	Equalization Charge	Float Charge
Limited current: $\leq 0.2 C_{10}A$	Constant Voltage: 2.35~2.4V@25°C(77°F) Temp.Coefficient:-4mV/°C	Constant Voltage: 2.23~2.27V@25°C(77°F) Temp.Coefficient:-3mV/°C