

Motive Battery

Energy Storage Battery

Reserve Battery

Motorcycle Battery



## Industry Battery-General Purpose AGM Battery-TN Series

# TN2-500

(2V 500Ah)

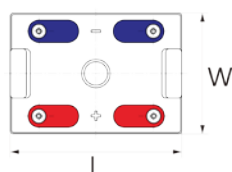
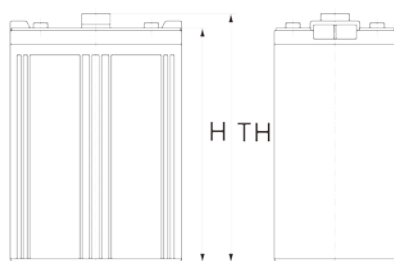
### GENERAL FEATURES

- ◆ Oxygen recombination technology: maintenance-free, no need to add water or acid
- ◆ The patent grid alloy: less gassing, low self-discharge, excellent corrosion resistance
- ◆ Design life is 11~13 years at 25°C under standby application, deep discharge recoverability
- ◆ High quality AGM separator: extend cycle life and prevent micro short circuit
- ◆ ABS container: increase the strength of battery (Flame-retardant ABS UL94-V0 is optional)

### Dimension

Unit:mm

Length	240±2mm / 9.45inch
Width	172±2mm / 6.77inch
Container Height	330±3mm / 12.99inch
Total Height	350±3mm / 13.78inch



### Application

- ◆ Uninterrupted Power Supply ( UPS )
- ◆ Communications and electric equipment
- ◆ Emergency lighting equipment
- ◆ Fire alarm and security system
- ◆ Control equipment, and other factory automation equipment
- ◆ Emergency power supply ( EPS )
- ◆ Portable VTR/TV, radio and so on
- ◆ Power tools, lawn mowers, vacuum cleaners
- ◆ Cameras and photographic equipment
- ◆ Portable measuring equipment
- ◆ Portable telephone sets
- ◆ Various power toys and hobby equipment
- ◆ Lighting equipment

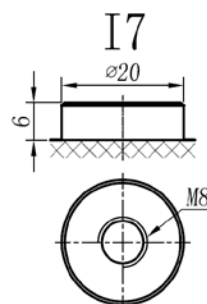
### Terminal

Unit:mm

Terminal Type: I7

### Weight

31.5kg 69.44lbs



ISO9001 ISO14001 OHSAS18001

This document is subject to change without prior notification

Motive Battery

 Energy Storage Battery

 Reserve Battery

 Motorcycle Battery

## TN2-500

### Specificaion

<b>Nominal Voltage</b>	2V	
<b>Rated Capacity(25°C)</b>	533Ah	20hr Rate (1.80V/cell)
	500Ah	10hr Rate (1.80V/cell)
	442Ah	5hr Rate (1.75V/cell)
	394Ah	3hr Rate (1.70V/cell)
	308Ah	1hr Rate (1.60V/cell)
<b>Container Material</b>	ABS ( Flame-retardant ABS UL94-V0 is optional )	
<b>Operating Temperature Range</b>	<b>Discharge</b>	-20 ~ +50°C
	<b>Charge</b>	0 ~ +40°C
	<b>Storage</b>	-15 ~ +40°C
<b>Capacity Effected by Temperature</b>	40°C / 104°F	106%
	25°C / 77°F	100%
	0°C / 32°F	86%
	-10°C / 14°F	65%
<b>Charge</b>	<b>Float Voltage</b>	2.23 -2.27V/cell@25°C, Tem.Coefficient : -3mV/cell/°C
	<b>Equalize Voltage</b>	2.35 -2.40V/cell@25°C, Tem.Coefficient : -3mV/cell/°C
	<b>Cycle Voltage</b>	2.40 -2.50V/cell@25°C, Tem.Coefficient : -5mV/cell°C
<b>Max. Charging Current</b>	150A ( 0.3C)	
<b>Max. Discharge Current (5S)</b>	4000A	
<b>Internal Resistance</b>	0.6mΩ	
<b>Self-Discharge</b>	<3%, TN series stored at 25 °C require a supplementary charge every six months, the charging interval would shrink when the ambient temperature went higher	

### Discharge Performance

Constant Current Discharge Table (25°C/77°F) Unit: A											
F.V/Time	30min	45min	1h	2h	3h	4h	5h	6h	8h	10h	20h
1.85V/cell	387.2	308.6	253.24	152.15	117.54	96.53	82.22	71.51	57.57	47.85	25.553
1.80V/cell	415.5	324.6	268.98	160.47	123.32	100.89	85.67	74.64	59.79	50.00	26.642
1.75V/cell	440.0	341.3	280.65	167.17	127.89	104.34	88.31	76.46	60.90	50.55	26.765
1.70V/cell	461.7	354.2	290.49	172.04	131.24	106.58	89.83	77.77	61.91	51.05	27.068
1.67V/cell	484.3	369.7	300.95	177.22	134.18	108.91	91.76	79.08	62.72	51.75	27.371
1.60V/cell	501.0	379.6	308.05	181.48	137.03	110.43	93.08	80.19	63.53	52.35	27.674

Constant Power Discharge Table (25°C/77°F) Unit: W											
F.V/Time	30min	45min	1h	2h	3h	4h	5h	6h	8h	10h	20h
1.85V/cell	740.0	593.3	489.84	295.87	229.80	189.40	161.99	141.20	114.23	95.10	50.904
1.80V/cell	787.7	620.1	517.35	310.69	239.84	197.11	167.98	146.96	118.27	99.30	52.879
1.75V/cell	827.8	648.2	537.44	322.26	248.07	203.20	172.65	149.99	120.29	100.30	53.126
1.70V/cell	861.2	667.9	553.38	330.38	253.75	206.76	175.09	152.31	122.01	101.20	53.631
1.67V/cell	896.7	693.0	570.02	338.81	258.11	210.51	178.23	154.53	123.42	102.30	54.237
1.60V/cell	918.3	705.1	579.46	344.69	262.28	212.44	180.06	156.15	124.74	103.30	54.843

☐ 动力电池

■ 储能电池

■ 备用电池

☐ 摩托车电池



### 阀控式免维护铅酸蓄电池-通用型

# TN2-500

(2V 500Ah)

## 产品特点

- ◆ 阀控式免维护设计，寿命期间无需加水或加酸
- ◆ 专利稀土合金板栅，减少气体产生，自放电率低，抗腐蚀能力出众
- ◆ 在25°C下，产品浮充设计寿命为11~13年，优良的深放电恢复能力
- ◆ 高质量AGM隔板：防止微短路，延长循环寿命
- ◆ ABS壳盖：电池外壳强度高（阻燃壳体UL94-V0可选）



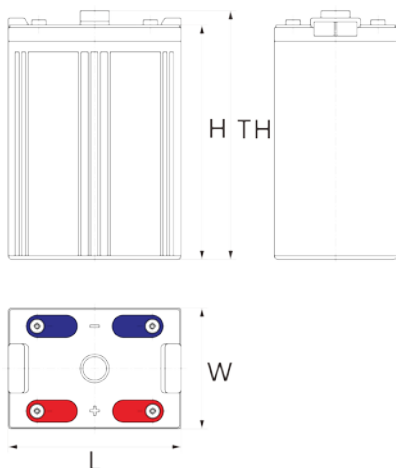
## 产品应用

- ◆ 不间断电源(UPS)
- ◆ 通信和电力设备
- ◆ 紧急照明设备
- ◆ 火灾报警及安防系统
- ◆ 控制设备及其他机械自动化设备
- ◆ 应急电源系统
- ◆ 便携式音频设备
- ◆ 电动工具，割草机，真空吸尘器
- ◆ 照相设备
- ◆ 便携式测量工具
- ◆ 便携式通话设备
- ◆ 各式电动玩具及娱乐设施
- ◆ 照明设备

## 尺寸

单个尺寸

长	240±2mm
宽	172±2mm
高	330±3mm
总高	350±3mm



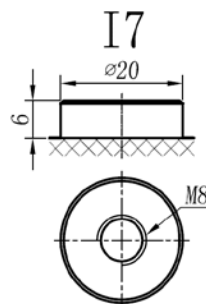
## 端子类型

单位:mm

端子类型 I7

## 重量

31.5kg 69.44lbs



内容如有改动，恕不另行通知

□ 动力电池

■ 储能电池

■ 备用电池

□ 摩托车电池



## TN2-500

### 规格书

额定电压	2V	
额定容量	533Ah	20hr Rate (1.80V/cell)
	500Ah	10hr Rate (1.80V/cell)
	442Ah	5hr Rate (1.75V/cell)
	394Ah	3hr Rate (1.70V/cell)
	308Ah	1hr Rate (1.60V/cell)
壳体材料	ABS (阻燃ABS壳体可选)	
使用温度范围	放电	-20 ~ +50°C
	充电	0 ~ +40°C
	储存	-15 ~ +40°C
不同温度下电池容量系数	40°C / 104°F	106%
	25°C / 77°F	100%
	0°C / 32°F	86%
	-10°C / 14°F	65%
充电	浮充电压	2.23 -2.27V/单格@25°C, 温度补偿系数: -3mV/单格/°C
	均充电压	2.35 -2.40V/单格@25°C, 温度补偿系数: -3mV/单格/°C
	循环使用电压	2.40 -2.50V/单格@25°C, 温度补偿系数: -5mV/单格/°C
最大充电电流	150A (0.3C)	
最大放电电流 (5S)	4000A	
电阻	0.6mΩ	
自放电	<3%, TN系列储存在25°C 时需每6个月进行一次补充充电, 环境温度更高时则充电间隔时间越短	

### 放电性能

恒电流放电表 (25°C/77°F) 单位: A											
F.V/Time	30min	45min	1h	2h	3h	4h	5h	6h	8h	10h	20h
1.85V/cell	387.2	308.6	253.24	152.15	117.54	96.53	82.22	71.51	57.57	47.85	25.553
1.80V/cell	415.5	324.6	268.98	160.47	123.32	100.89	85.67	74.64	59.79	50.00	26.642
1.75V/cell	440.0	341.3	280.65	167.17	127.89	104.34	88.31	76.46	60.90	50.55	26.765
1.70V/cell	461.7	354.2	290.49	172.04	131.24	106.58	89.83	77.77	61.91	51.05	27.068
1.67V/cell	484.3	369.7	300.95	177.22	134.18	108.91	91.76	79.08	62.72	51.75	27.371
1.60V/cell	501.0	379.6	308.05	181.48	137.03	110.43	93.08	80.19	63.53	52.35	27.674

恒功率放电表 (25°C/77°F) 单位: W											
F.V/Time	30min	45min	1h	2h	3h	4h	5h	6h	8h	10h	20h
1.85V/cell	740.0	593.3	489.84	295.87	229.80	189.40	161.99	141.20	114.23	95.10	50.904
1.80V/cell	787.7	620.1	517.35	310.69	239.84	197.11	167.98	146.96	118.27	99.30	52.879
1.75V/cell	827.8	648.2	537.44	322.26	248.07	203.20	172.65	149.99	120.29	100.30	53.126
1.70V/cell	861.2	667.9	553.38	330.38	253.75	206.76	175.09	152.31	122.01	101.20	53.631
1.67V/cell	896.7	693.0	570.02	338.81	258.11	210.51	178.23	154.53	123.42	102.30	54.237
1.60V/cell	918.3	705.1	579.46	344.69	262.28	212.44	180.06	156.15	124.74	103.30	54.843