

Motive Battery

Energy Storage Battery

Reserve Battery

Motorcycle Battery



Industry Battery-General Purpose AGM Battery-TN Series

TN6-180

(6V 180Ah)

GENERAL FEATURES

- Oxygen recombination technology: maintenance-free, no need to add water or acid
- The patent grid alloy: less gassing, low self-discharge, excellent corrosion resistance
- Design life is 7~9 years at 25°C under standby application, deep discharge recoverability
- High quality AGM separator: extend cycle life and prevent micro short circuit
- ABS container: increase the strength of battery (Flame-retardant ABS UL94-V0 is optional)

Dimension

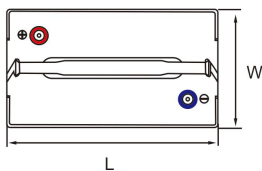
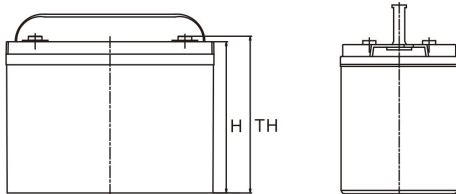
Unit:mm

Length 306±2mm / 12.05inch

Width 168±2mm / 6.61inch

Container Height 222±3mm / 8.74inch

Total Height 228±3mm / 8.98inch



Application

- Uninterrupted Power Supply (UPS)
- Communications and electric equipment
- Emergency lighting equipment
- Fire alarm and security system
- Robots, control equipment, and other factory automation equipment
- Emergency power supply (EPS)
- Portable VTR/TV, radio and so on
- Power tools, lawn mowers, vacuum cleaners
- Cameras and photographic equipment
- Portable measuring equipment
- Portable telephone sets
- Various power toys and hobby equipment
- Lighting equipment

Terminal

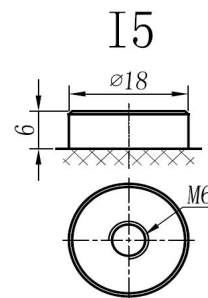
Unit:mm

Terminal Type: I5

Weight

27kg

59.52lbs



This document is subject to change without prior notification

Motive Battery

Energy Storage Battery

Reserve Battery

Motorcycle Battery



TN6-180

Specificaion

Nominal Voltage	6V	
Rated Capacity(25°C)	190Ah	20hr Rate(1.80V/cell)
	180Ah	10hr Rate(1.80V/cell)
	159Ah	5hr Rate(1.75V/cell)
	149Ah	3hr Rate(1.70V/cell)
	113Ah	1hr Rate(1.60V/cell)
Container Material	ABS (Flame-retardant ABS UL94-V0 is optional)	
Operating Temperature Range	Discharge	-20 ~ +50°C
	Charge	0 ~ +40°C
	Storage	-15 ~ +40°C
Capacity Effected by Temperature	40°C / 104°F	106%
	25°C / 77°F	100%
	0°C / 32°F	86%
	-10°C / 14°F	65%
Charge	Float Voltage	2.23 -2.27V/cell@25°C, Tem.Coefficient : -3mV/cell/°C
	Equalize Voltage	2.35 -2.40V/cell@25°C, Tem.Coefficient : -3mV/cell/°C
	Cycle Voltage	2.40 -2.50V/cell@25°C, Tem.Coefficient : -5mV/cell/°C
Max. Charging Current	54A (0.3C)	
Max. Discharge Current (5S)	1750A	
Internal Resistance	2.2mΩ	
Self-Discharge	<3%, TN series stored at 25 °C require a supplementary charge every six months, the charging interval would shrink when the ambient temperature went higher	

Discharge Performance

Constant Current Discharge Table (25°C/77°F) Unit: A

F.V/Time	5min	10min	15min	20min	30min	45min	1h	2h	3h	4h	5h	6h	8h	10h	20h
1.85V/cell	312.9	246.0	209.2	175.1	139.1	106.8	87.40	55.63	44.01	35.97	29.05	25.09	20.42	17.057	9.424
1.80V/cell	420.1	314.4	252.8	206.9	164.1	124.1	97.90	60.82	47.35	38.44	31.15	26.94	21.65	18.018	9.509
1.75V/cell	473.6	345.5	276.1	222.6	170.4	128.8	102.48	63.04	48.21	39.31	31.89	27.68	22.02	18.138	9.607
1.70V/cell	521.7	376.6	294.8	233.9	177.4	134.0	105.69	65.52	49.57	40.30	32.76	28.29	22.26	18.379	9.790
1.67V/cell	575.2	406.3	313.6	248.5	187.1	137.3	109.28	67.37	51.67	41.66	33.62	28.91	22.63	18.739	9.911
1.60V/cell	\	441.2	335.3	264.7	197.5	143.1	113.11	69.60	53.28	43.02	34.74	29.52	22.88	18.979	9.972

Constant Power Discharge Table (25°C/77°F) Unit: W

F.V/Time	5min	10min	15min	20min	30min	45min	1h	2h	3h	4h	5h	6h	8h	10h	20h
1.85V/cell	619.6	487.1	414.2	346.6	275.4	208.6	170.66	108.62	85.93	70.24	56.73	49.24	40.07	33.773	18.659
1.80V/cell	831.8	622.5	500.6	409.6	324.9	242.4	191.18	118.76	92.45	75.07	60.83	52.86	42.48	35.676	18.828
1.75V/cell	937.8	684.1	546.7	440.8	337.5	251.5	200.11	123.11	94.14	76.76	62.28	54.31	43.21	35.914	19.021
1.70V/cell	1032.9	745.6	583.7	463.2	351.2	261.7	206.38	127.93	96.80	78.69	63.97	55.52	43.69	36.390	19.383
1.67V/cell	1138.9	804.5	620.8	491.9	370.5	268.2	213.38	131.56	100.90	81.35	65.66	56.73	44.41	37.103	19.625
1.60V/cell	\	873.6	663.8	524.0	391.0	279.5	220.87	135.90	104.04	84.00	67.83	57.93	44.90	37.579	19.745

☐ 动力电池

■ 储能电池

■ 备用电池

☐ 摩托车电池



阀控式免维护铅酸蓄电池-通用型

TN6-180

(6V 180Ah)

产品特点

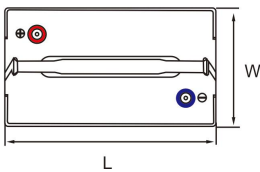
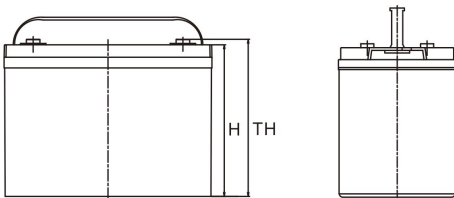
- ◆ 阀控式免维护设计，寿命期间无需加水或加酸
- ◆ 专利稀土合金板栅，减少气体产生，自放电率低，抗腐蚀能力出众
- ◆ 在25°C下，产品浮充设计寿命为7~9年，优良的深放电恢复能力
- ◆ 高质量AGM隔板：防止微短路，延长循环寿命
- ◆ ABS壳盖：电池外壳强度高（阻燃壳体UL94-V0可选）



尺寸

单个尺寸

长	306±2mm
宽	168±2mm
高	222±3mm
总高	228±3mm



ISO9001 ISO14001 OHSAS18001

产品应用

- ◆ 不间断电源(UPS)
- ◆ 通信和电力设备
- ◆ 紧急照明设备
- ◆ 火灾报警及安防系统
- ◆ 机器人、控制设备及其他机械自动化设备
- ◆ 应急电源系统
- ◆ 便携式音频设备
- ◆ 电动工具，割草机，真空吸尘器
- ◆ 照相设备
- ◆ 便携式测量工具
- ◆ 便携式通话设备
- ◆ 各式电动玩具及娱乐设施
- ◆ 照明设备

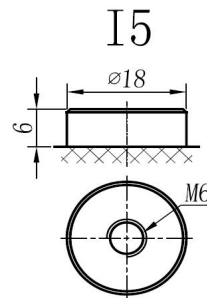
端子类型

单位:mm

端子类型 I5

重量

27kg 59.52lbs



内容如有改动，恕不另行通知

动力电池

储能电池

备用电池

摩托车电池



TN6-180

规格书

额定电压	6V	
容量(25°C)	190Ah	20hr Rate(1.80V/cell)
	180Ah	10hr Rate(1.80V/cell)
	159Ah	5hr Rate(1.75V/cell)
	149Ah	3hr Rate(1.70V/cell)
	113Ah	1hr Rate(1.60V/cell)
壳体材料	ABS (阻燃ABS壳体可选)	
使用温度范围	放电	-20 ~ +50°C
	充电	0 ~ +40°C
	储存	-15 ~ +40°C
不同温度下 电池容量系数	40°C / 104°F	106%
	25°C / 77°F	100%
	0°C / 32°F	86%
	-10°C / 14°F	65%
充电	浮充电压	2.23 - 2.27V/单格@25°C, 温度补偿系数: -3mV/单格/°C
	均充电压	2.35 - 2.40V/单格@25°C, 温度补偿系数: -3mV/单格/°C
	循环使用电压	2.40 - 2.50V/单格@25°C, 温度补偿系数: -5mV/单格/°C
最大充电电流	54A (0.3C)	
最大放电电流 (5S)	1750A	
电阻	2.2mΩ	
自放电	<3%, TN系列储存在25°C时需每6个月进行一次补充充电, 环境温度更高时则充电间隔时间越短	

放电性能

恒电流放电表 (25°C/77°F) 单位: A															
F.V/Time	5min	10min	15min	20min	30min	45min	1h	2h	3h	4h	5h	6h	8h	10h	20h
1.85V/cell	312.9	246.0	209.2	175.1	139.1	106.8	87.40	55.63	44.01	35.97	29.05	25.09	20.42	17.057	9.424
1.80V/cell	420.1	314.4	252.8	206.9	164.1	124.1	97.90	60.82	47.35	38.44	31.15	26.94	21.65	18.018	9.509
1.75V/cell	473.6	345.5	276.1	222.6	170.4	128.8	102.48	63.04	48.21	39.31	31.89	27.68	22.02	18.138	9.607
1.70V/cell	521.7	376.6	294.8	233.9	177.4	134.0	105.69	65.52	49.57	40.30	32.76	28.29	22.26	18.379	9.790
1.67V/cell	575.2	406.3	313.6	248.5	187.1	137.3	109.28	67.37	51.67	41.66	33.62	28.91	22.63	18.739	9.911
1.60V/cell	\	441.2	335.3	264.7	197.5	143.1	113.11	69.60	53.28	43.02	34.74	29.52	22.88	18.979	9.972

恒功率放电表 (25°C/77°F) 单位: W															
F.V/Time	5min	10min	15min	20min	30min	45min	1h	2h	3h	4h	5h	6h	8h	10h	20h
1.85V/cell	619.6	487.1	414.2	346.6	275.4	208.6	170.66	108.62	85.93	70.24	56.73	49.24	40.07	33.773	18.659
1.80V/cell	831.8	622.5	500.6	409.6	324.9	242.4	191.18	118.76	92.45	75.07	60.83	52.86	42.48	35.676	18.828
1.75V/cell	937.8	684.1	546.7	440.8	337.5	251.5	200.11	123.11	94.14	76.76	62.28	54.31	43.21	35.914	19.021
1.70V/cell	1032.9	745.6	583.7	463.2	351.2	261.7	206.38	127.93	96.80	78.69	63.97	55.52	43.69	36.390	19.383
1.67V/cell	1138.9	804.5	620.8	491.9	370.5	268.2	213.38	131.56	100.90	81.35	65.66	56.73	44.41	37.103	19.625
1.60V/cell	\	873.6	663.8	524.0	391.0	279.5	220.87	135.90	104.04	84.00	67.83	57.93	44.90	37.579	19.745