

Motive Battery

Energy Storage Battery

Reserve Battery

Motorcycle Battery



Industry Battery-General Purpose AGM Battery-TN Series

TN6-200

(6V 200Ah)

GENERAL FEATURES

- ♦ Oxygen recombination technology: maintenance-free, no need to add water or acid
- ♦ The patent grid alloy: less gassing, low self-discharge, excellent corrosion resistance
- ♦ Design life is 7~9 years at 25°C under standby application, deep discharge recoverability
- ♦ High quality AGM separator: extend cycle life and prevent micro short circuit
- ♦ ABS container: increase the strength of battery (Flame-retardant ABS UL94-V0 is optional)

Dimension

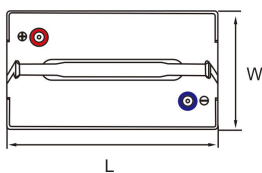
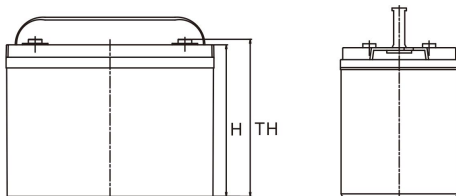
Unit:mm

Length 306±2mm / 12.05inch

Width 168±2mm / 6.61inch

Container Height 222±3mm / 8.74inch

Total Height 228±3mm / 8.98inch



ISO9001 ISO14001 OHSAS18001



Application

- ♦ Uninterrupted Power Supply (UPS)
- ♦ Communications and electric equipment
- ♦ Emergency lighting equipment
- ♦ Fire alarm and security system
- ♦ Robots, control equipment, and other factory automation equipment
- ♦ Emergency power supply (EPS)
- ♦ Portable VTR/TV, radio and so on
- ♦ Power tools, lawn mowers, vacuum cleaners
- ♦ Cameras and photographic equipment
- ♦ Portable measuring equipment
- ♦ Portable telephone sets
- ♦ Various power toys and hobby equipment
- ♦ Lighting equipment

Terminal

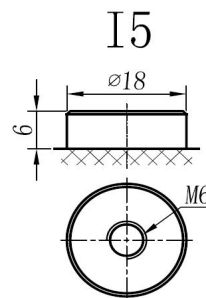
Unit:mm

Terminal Type: I5

Weight

28kg

61.73lbs



This document is subject to change without prior notification

Motive Battery

Energy Storage Battery

Reserve Battery

Motorcycle Battery



TN6-200

Specificaion

Nominal Voltage	6V	
Rated Capacity(25°C)	206Ah	20hr Rate(1.80V/cell)
	200Ah	10hr Rate(1.80V/cell)
	175Ah	5hr Rate(1.75V/cell)
	163Ah	3hr Rate(1.70V/cell)
	124Ah	1hr Rate(1.60V/cell)
Container Material	ABS (Flame-retardant ABS UL94-V0 is optional)	
Operating Temperature Range	Discharge	-20 ~ +50°C
	Charge	0 ~ +40°C
	Storage	-15 ~ +40°C
Capacity Effected by Temperature	40°C / 104°F	106%
	25°C / 77°F	100%
	0°C / 32°F	86%
	-10°C / 14°F	65%
Charge	Float Voltage	2.23 -2.27V/cell@25°C, Tem.Coefficient : -3mV/cell/°C
	Equalize Voltage	2.35 -2.40V/cell@25°C, Tem.Coefficient : -3mV/cell/°C
	Cycle Voltage	2.40 -2.50V/cell@25°C, Tem.Coefficient : -5mV/cell/°C
Max. Charging Current	60A (0.3C)	
Max. Discharge Current (5S)	2000A	
Internal Resistance	1.4mΩ	
Self-Discharge	<3%, TN series stored at 25 °C require a supplementary charge every six months, the charging interval would shrink when the ambient temperature went higher	

Discharge Performance

Constant Current Discharge Table (25°C/77°F) Unit: A

F.V/Time	5min	10min	15min	20min	30min	45min	1h	2h	3h	4h	5h	6h	8h	10h	20h
1.85V/cell	342.6	269.4	229.1	191.6	152.3	116.8	95.71	61.00	48.21	39.38	31.77	27.47	22.32	18.919	10.210
1.80V/cell	460.0	344.2	276.8	226.5	179.7	135.9	107.18	66.48	51.87	42.02	34.10	29.49	23.63	20.020	10.310
1.75V/cell	\	378.2	302.3	243.6	186.6	141.1	112.16	69.02	52.78	42.93	34.92	30.30	24.04	20.220	10.410
1.70V/cell	\	412.2	322.8	256.1	194.2	146.7	115.71	71.76	54.30	44.15	35.83	30.91	24.44	20.420	10.511
1.67V/cell	\	444.8	343.2	272.1	204.8	150.3	119.57	73.79	56.64	45.68	36.84	31.61	24.85	20.821	10.611
1.60V/cell	\	\	367.1	289.8	216.2	156.7	123.83	76.23	58.36	47.10	38.06	32.32	25.05	21.021	10.711

Constant Power Discharge Table (25°C/77°F) Unit: W

F.V/Time	5min	10min	15min	20min	30min	45min	1h	2h	3h	4h	5h	6h	8h	10h	20h
1.85V/cell	626.5	497.6	427.5	361.2	290.3	221.5	182.08	116.72	92.69	75.88	61.36	53.55	43.64	37.437	20.420
1.80V/cell	832.0	628.3	509.5	420.7	337.2	255.7	202.80	126.53	99.10	80.58	65.57	57.26	46.15	39.540	20.621
1.75V/cell	/	679.6	549.7	448.2	347.2	262.8	211.21	130.73	100.60	82.18	67.07	58.66	46.85	39.940	20.721
1.70V/cell	/	723.7	578.8	467.6	359.5	271.3	217.22	135.74	103.20	84.18	68.67	59.76	47.45	40.240	21.121
1.67V/cell	/	773.9	610.7	493.0	376.1	276.6	222.92	138.64	107.11	86.69	70.27	60.86	48.15	41.041	21.421
1.60V/cell	/	/	642.3	519.4	394.2	286.7	229.63	142.64	109.91	89.19	72.37	62.06	48.45	41.441	21.622

☐ 动力电池

■ 储能电池

■ 备用电池

☐ 摩托车电池



阀控式免维护铅酸蓄电池-通用型

TN6-200

(6V 200Ah)

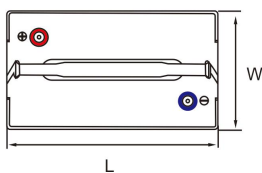
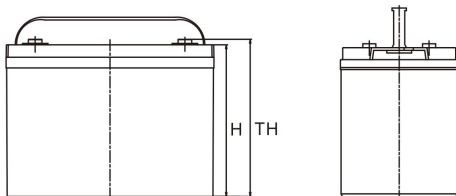
产品特点

- ◆ 阀控式免维护设计，寿命期间无需加水或加酸
- ◆ 专利稀土合金板栅，减少气体产生，自放电率低，抗腐蚀能力出众
- ◆ 在25°C下，产品浮充设计寿命为7~9年，优良的深放电恢复能力
- ◆ 高质量AGM隔板：防止微短路，延长循环寿命
- ◆ ABS壳盖：电池外壳强度高（阻燃壳体UL94-V0可选）

尺寸

单个尺寸

长	306±2mm
宽	168±2mm
高	222±3mm
总高	228±3mm



ISO9001 ISO14001 OHSAS18001



产品应用

- ◆ 不间断电源(UPS)
- ◆ 通信和电力设备
- ◆ 紧急照明设备
- ◆ 火灾报警及安防系统
- ◆ 机器人、控制设备及其他机械自动化设备
- ◆ 应急电源系统
- ◆ 便携式音频设备
- ◆ 电动工具，割草机，真空吸尘器
- ◆ 照相设备
- ◆ 便携式测量工具
- ◆ 便携式通话设备
- ◆ 各式电动玩具及娱乐设施
- ◆ 照明设备

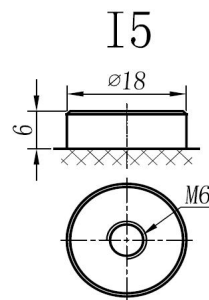
端子类型

单位:mm

端子类型 I5

重量

28kg 61.73lbs



内容如有改动，恕不另行通知

动力电池

储能电池

备用电池

摩托车电池



TN6-200

规格书

额定电压	6V	
容量(25°C)	206Ah	20hr Rate(1.80V/cell)
	200Ah	10hr Rate(1.80V/cell)
	175Ah	5hr Rate(1.75V/cell)
	163Ah	3hr Rate(1.70V/cell)
	124Ah	1hr Rate(1.60V/cell)
壳体材料	ABS (阻燃ABS壳体可选)	
使用温度范围	放电	-20 ~ +50°C
	充电	0 ~ +40°C
	储存	-15 ~ +40°C
不同温度下 电池容量系数	40°C / 104°F	106%
	25°C / 77°F	100%
	0°C / 32°F	86%
	-10°C / 14°F	65%
充电	浮充电压	2.23 - 2.27V/单格@25°C, 温度补偿系数: -3mV/单格/°C
	均充电压	2.35 - 2.40V/单格@25°C, 温度补偿系数: -3mV/单格/°C
	循环使用电压	2.40 - 2.50V/单格@25°C, 温度补偿系数: -5mV/单格/°C
最大充电电流	60A (0.3C)	
最大放电电流 (5S)	2000A	
电阻	1.4mΩ	
自放电	<3%, TN系列储存在25°C时需每6个月进行一次补充充电, 环境温度更高时则充电间隔时间越短	

放电性能

恒电流放电表 (25°C/77°F) 单位: A															
F.V/Time	5min	10min	15min	20min	30min	45min	1h	2h	3h	4h	5h	6h	8h	10h	20h
1.85V/cell	342.6	269.4	229.1	191.6	152.3	116.8	95.71	61.00	48.21	39.38	31.77	27.47	22.32	18.919	10.210
1.80V/cell	460.0	344.2	276.8	226.5	179.7	135.9	107.18	66.48	51.87	42.02	34.10	29.49	23.63	20.020	10.310
1.75V/cell	\	378.2	302.3	243.6	186.6	141.1	112.16	69.02	52.78	42.93	34.92	30.30	24.04	20.220	10.410
1.70V/cell	\	412.2	322.8	256.1	194.2	146.7	115.71	71.76	54.30	44.15	35.83	30.91	24.44	20.420	10.511
1.67V/cell	\	444.8	343.2	272.1	204.8	150.3	119.57	73.79	56.64	45.68	36.84	31.61	24.85	20.821	10.611
1.60V/cell	\	\	367.1	289.8	216.2	156.7	123.83	76.23	58.36	47.10	38.06	32.32	25.05	21.021	10.711

恒功率放电表 (25°C/77°F) 单位: W															
F.V/Time	5min	10min	15min	20min	30min	45min	1h	2h	3h	4h	5h	6h	8h	10h	20h
1.85V/cell	626.5	497.6	427.5	361.2	290.3	221.5	182.08	116.72	92.69	75.88	61.36	53.55	43.64	37.437	20.420
1.80V/cell	832.0	628.3	509.5	420.7	337.2	255.7	202.80	126.53	99.10	80.58	65.57	57.26	46.15	39.540	20.621
1.75V/cell	/	679.6	549.7	448.2	347.2	262.8	211.21	130.73	100.60	82.18	67.07	58.66	46.85	39.940	20.721
1.70V/cell	/	723.7	578.8	467.6	359.5	271.3	217.22	135.74	103.20	84.18	68.67	59.76	47.45	40.240	21.121
1.67V/cell	/	773.9	610.7	493.0	376.1	276.6	222.92	138.64	107.11	86.69	70.27	60.86	48.15	41.041	21.421
1.60V/cell	/	/	642.3	519.4	394.2	286.7	229.63	142.64	109.91	89.19	72.37	62.06	48.45	41.441	21.622