

■ Motive Battery

□ Energy Storage Battery

□ Reserve Battery

□ Motorcycle Battery



Motive Battery-Deep Cycle Type-TNE Series

TNE12-15

(12V 15Ah)

GENERAL FEATURES

- ◆ Oxygen recombination technology: Maintenance Free VRLA Battery, no need to add water or acid
- ◆ The patent grid alloy: less gassing, low self-discharge, excellent corrosion resistance performance
- ◆ Special paste formula: additives are added to improve deep discharge, long cycle life
- ◆ High quality AGM separator: extend cycle life and prevent micro short circuit
- ◆ The patent Nano silica gel electrolytes, extend cycle life and improve the deep discharge performance
- ◆ ABS container: increase the strength of battery (Flame-retardant ABSUL94-V0 is optional)



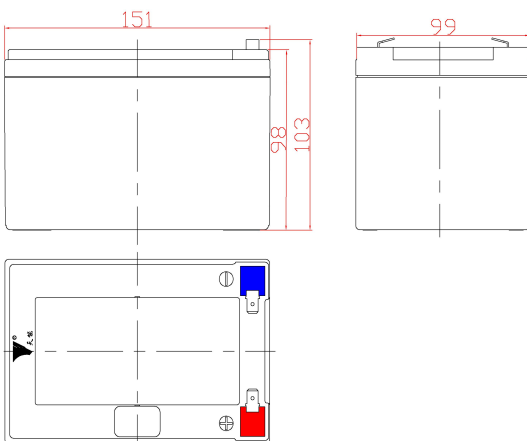
Application

- ◆ Electric tools or toys
- ◆ Electric Bicycle/Tricycle
- ◆ Golf trolleys and golf cart
- ◆ Patrol car
- ◆ Electric Sight-seeing Tour Bus
- ◆ Sweeper
- ◆ Wheelchairs
- ◆ Lawn mowers
- ◆ Illumination light

Dimension

Unit:mm

| | |
|------------------|--------------------|
| Length | 151±2mm / 5.94inch |
| Width | 99±2mm / 3.9inch |
| Container Height | 98±2mm / 3.86inch |
| Total Height | 103±2mm / 4.06inch |



Terminal

Unit:mm

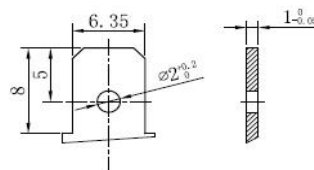
Terminal Type: T2-1

Weight

4.3kg

9.48lbs

T2-1



This document is subject to change without prior notification

- Motive Battery
- Energy Storage Battery
- Reserve Battery
- Motorcycle Battery



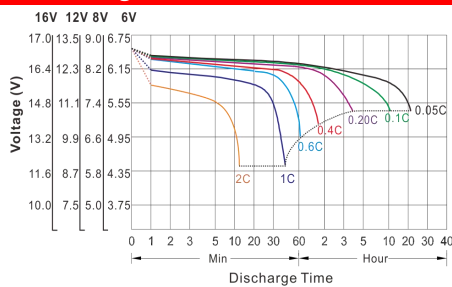
TNE12-15

Specificaion

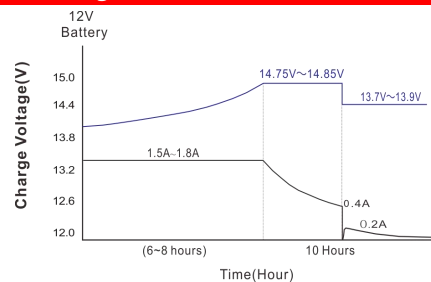
| | | |
|---|---|-------------|
| Nominal Voltage | 12V | |
| Nominal Capacity | 15Ah | |
| Rated Capacity | C20(1.80V/cell) | 15Ah |
| Capacity | C10(1.80V/cell) | 14Ah |
| (25°C) | C5(1.75V/cell) | 13Ah |
| Container Material | ABS (Flame-retardant ABSUL94-V0 is optional) | |
| Operating Temperature Range | Discharge | -20 ~ +50°C |
| | Charge | 0 ~ +40°C |
| | Storage | -15 ~ +40°C |
| Capacity Effected by Temperature | 40°C / 104°F | 106% |
| | 25°C / 77°F | 100% |
| | 0°C / 32°F | 86% |
| | -10°C / 14°F | 65% |
| Charge Method | Please refer to the "Charge Characteristics (25°C)" below | |
| Monthly Self Discharge | <3%, TNE series stored at 25°C require a supplementary charge every six months, the charging interval would shrink when the ambient temperature went higher | |

Performance Curve

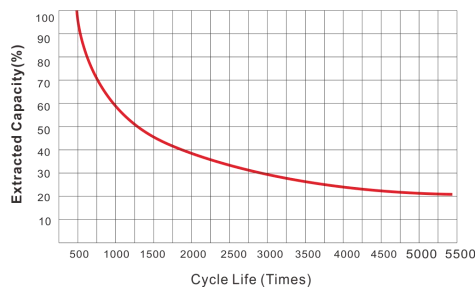
Discharge Characteristics (25°C)



Charge Characteristics (25°C)



Cycle Lives With Depth Of Discharge



Self-Discharge Characteristics

