

Motive Battery

Energy Storage Battery

Reserve Battery

Motorcycle Battery



Energy Storage Battery-AGM-GEL Technology-TNG Series

TNG12-75

(12V 75Ah)

GENERAL FEATURES

- ◆ Oxygen recombination technology: maintenance-free, no need to add water or acid
- ◆ The patent grid alloy: less gassing, low self-discharge, excellent corrosion resistance
- ◆ Special paste formula: additives for deep discharge, long cycle life
- ◆ High quality AGM separator: extend cycle life and prevent micro short circuit
- ◆ The patent Nano silica electrolytes, extend cycle life and improve the deep discharge performance
- ◆ ABS container: increase the strength of battery (Flame-retardant ABS UL94-V0 is optional)



Application

- ◆ Renewable energy system
- ◆ Hybrid solar power system
- ◆ Uninterrupted Power Supply (UPS)
- ◆ Communications and electric equipment
- ◆ Emergency lighting equipment
- ◆ Fire alarm and security systems
- ◆ Robots, control equipment, and other factory automation equipment
- ◆ Emergency power supply (EPS)
- ◆ Various power toy and hobby equipment
- ◆ Lighting equipment

Dimension

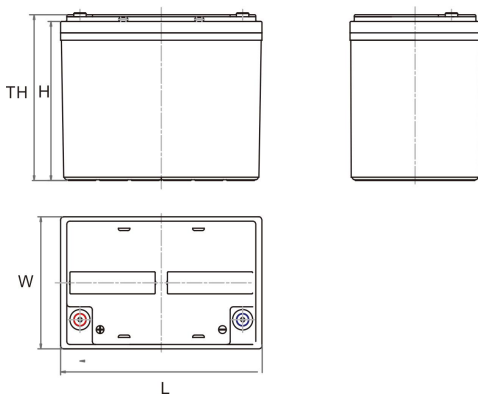
Unit:mm

Length 260±2mm / 10.24inch

Width 168±2mm / 6.61inch

Container Height 208±3mm / 8.19inch

Total Height 214±3mm / 8.43inch



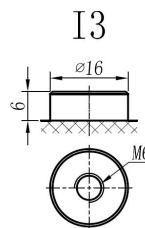
Terminal

Unit:mm

Terminal Type: I3

Weight

24kg 52.91lbs



This document is subject to change without prior notification

Motive Battery

 Energy Storage Battery

 Reserve Battery

 Motorcycle Battery


TNG12-75

Specificaion

Nominal Voltage	12V	
Rated Capacity(25°C)	80Ah	20hr Rate(1.80V/cell)
	75Ah	10hr Rate(1.80V/cell)
	64Ah	5hr Rate(1.75V/cell)
	60Ah	3hr Rate(1.70V/cell)
	46Ah	1hr Rate(1.60V/cell)
Container Material	ABS (Flame-retardant ABS UL94-V0 is optional)	
Operating Temperature Range	Discharge	-20 ~ +50°C
	Charge	0 ~ +40°C
	Storage	-15 ~ +40°C
Capacity Effected by Temperature	40°C / 104°F	106%
	25°C / 77°F	100%
	0°C / 32°F	86%
	-10°C / 14°F	65%
Charge Voltage	Float Voltage	2.25 -2.30V/cell@25°C, Tem. Coefficient: -3mV/cell/°C
	Equalize Voltage	2.35 -2.40V/cell@25°C, Tem. Coefficient: -3mV/cell/°C
	Cycle Voltage	2.40 -2.50V/cell@25°C, Tem. Coefficient: -5mV/cell/°C
Max Charging Current	22.5A (0.3C)	
Max. Discharge Current (5S)	900A	
Internal Resistance	6.6mΩ	
Self Discharge	<3%, TN series stored at 25 °C require a supplementary charge every six months, the charging interval would shrink when the ambient temperature went higher	

Discharge Performance

Constant Current Discharge Table (25°C/77°F) Unit: A															
F.V/Time	5min	10min	15min	20min	30min	45min	1h	2h	3h	4h	5h	6h	8h	10h	20h
1.85V/cell	126.0	99.0	84.2	70.4	56.0	43.0	35.39	22.49	17.80	14.50	11.70	10.20	8.29	7.09	3.941
1.80V/cell	169.0	126.4	101.7	83.3	66.0	49.9	39.59	24.59	19.20	15.50	12.60	10.90	8.79	7.51	3.982
1.75V/cell	190.6	139.0	111.1	89.6	68.6	51.8	41.39	25.49	19.50	15.90	12.90	11.20	8.94	7.59	4.023
1.70V/cell	209.8	151.5	118.6	94.1	71.3	53.9	42.69	26.49	20.10	16.30	13.20	11.50	9.07	7.66	4.094
1.65V/cell	231.4	163.5	126.2	100.0	75.2	55.3	44.19	27.19	20.90	16.80	13.60	11.70	9.21	7.82	4.156
1.60V/cell	255.3	177.5	134.9	106.5	79.5	57.6	45.79	28.19	21.60	17.40	14.10	12.00	9.30	7.90	4.176

Constant Power Discharge Table (25°C/77°F) Unit: W															
F.V/Time	5min	10min	15min	20min	30min	45min	1h	2h	3h	4h	5h	6h	8h	10h	20h
1.85V/cell	230.2	182.9	157.1	132.7	106.6	81.4	67.24	43.09	34.21	28.00	22.68	19.92	16.25	14.01	7.650
1.80V/cell	305.8	230.9	187.3	154.6	123.9	94.0	74.93	46.74	36.58	29.78	24.26	21.21	17.14	14.81	7.710
1.75V/cell	337.4	249.7	202.0	164.7	127.6	96.5	77.99	48.31	37.17	30.37	24.75	21.80	17.44	14.91	7.780
1.70V/cell	361.2	265.9	212.7	171.8	132.0	100.1	80.26	50.09	38.16	31.06	25.34	22.20	17.64	15.12	7.920
1.65V/cell	392.7	284.4	224.4	181.2	138.2	101.6	82.33	51.27	39.54	32.04	25.93	22.59	17.84	15.42	8.020
1.60V/cell	423.1	301.7	236.0	190.9	144.9	105.4	84.79	52.65	40.62	32.93	26.72	22.99	18.04	15.52	8.050

☐ 动力电池

■ 储能电池

☐ 备用电池

☐ 摩托车电池



储能电池-AGM-凝胶技术-TNG系列

TNG12-75

(12V 75Ah)

产品特点

- ◆ 阀控式免维护设计，寿命期间无需加水或加酸
- ◆ 专利稀土合金板栅，减少气体产生，自放电率低，抗腐蚀能力出众
- ◆ 特制组成配方，添加特殊试剂，增进深放电性能，延长循环寿命
- ◆ 高质量AGM隔板：防止微短路，延长循环寿命
- ◆ 纳米硅胶专利电解质，延长循环寿命，增进深放电性能
- ◆ ABS壳盖：电池外壳强度高（阻燃壳体UL94-V0可选）



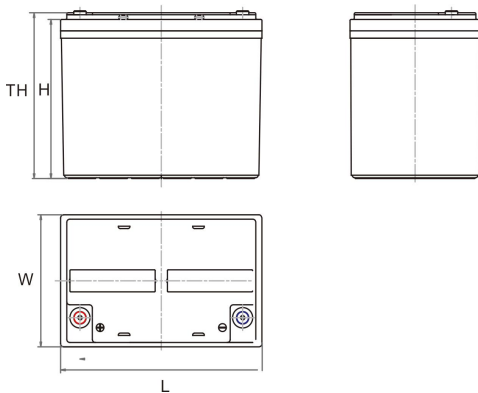
产品应用

- ◆ 可再生能源系统
- ◆ 太阳能混合动力系统
- ◆ 不间断电源 (UPS)
- ◆ 通信及电力设备
- ◆ 应急照明系统
- ◆ 安防及火灾报警系统
- ◆ 机械自动化控制设备
- ◆ 应急电源 (EPS)
- ◆ 各式电动玩具及娱乐设施
- ◆ 照明设备

尺寸

单个尺寸

长	260±2mm / 10.24inch
宽	168±2mm / 6.61inch
高	208±3mm / 8.19inch
总高	214±3mm / 8.43inch



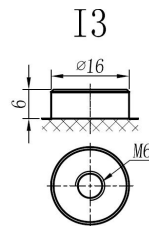
端子类型

单位:mm

端子类型 I3

重量

24kg 52.91lbs



内容如有改动，恕不另行通知

动力电池

储能电池

备用电池

摩托车电池



TNG12-75

规格书

额定电压	12V	
容量(25°C)	80Ah	20hr Rate(1.80V/cell)
	75Ah	10hr Rate(1.80V/cell)
	64Ah	5hr Rate(1.75V/cell)
	60Ah	3hr Rate(1.70V/cell)
	46Ah	1hr Rate(1.60V/cell)
壳体材料	ABS (阻燃ABS壳体可选)	
使用温度范围	放电	-20 ~ +50°C
	充电	0 ~ +40°C
	储存	-15 ~ +40°C
不同温度下电 池容量系数	40°C / 104°F	106%
	25°C / 77°F	100%
	0°C / 32°F	86%
	-10°C / 14°F	65%
充电电压	浮充	2.25 -2.30V/单格@25°C, 温度补偿系数: -3mV/单格/°C
	均充	2.35 -2.40V/单格@25°C, 温度补偿系数: -3mV/单格/°C
	循环使用	2.40 -2.50V/单格@25°C, 温度补偿系数: -5mV/单格/°C
最大充电电流	22.5A (0.3C)	
最大放电电流(5S)	900A	
电阻	6.6mΩ	
自放电	<3%, TN系列储存在25°C时需每6个月进行一次补充充电, 环境温度更高时则充电间隔时间越短	

放电性能

恒电流放电表 (25°C/77°F) 单位: A															
F.V/Time	5min	10min	15min	20min	30min	45min	1h	2h	3h	4h	5h	6h	8h	10h	20h
1.85V/cell	126.0	99.0	84.2	70.4	56.0	43.0	35.39	22.49	17.80	14.50	11.70	10.20	8.29	7.09	3.941
1.80V/cell	169.0	126.4	101.7	83.3	66.0	49.9	39.59	24.59	19.20	15.50	12.60	10.90	8.79	7.51	3.982
1.75V/cell	190.6	139.0	111.1	89.6	68.6	51.8	41.39	25.49	19.50	15.90	12.90	11.20	8.94	7.59	4.023
1.70V/cell	209.8	151.5	118.6	94.1	71.3	53.9	42.69	26.49	20.10	16.30	13.20	11.50	9.07	7.66	4.094
1.65V/cell	231.4	163.5	126.2	100.0	75.2	55.3	44.19	27.19	20.90	16.80	13.60	11.70	9.21	7.82	4.156
1.60V/cell	255.3	177.5	134.9	106.5	79.5	57.6	45.79	28.19	21.60	17.40	14.10	12.00	9.30	7.90	4.176

恒功率放电表 (25°C/77°F) 单位: W															
F.V/Time	5min	10min	15min	20min	30min	45min	1h	2h	3h	4h	5h	6h	8h	10h	20h
1.85V/cell	230.2	182.9	157.1	132.7	106.6	81.4	67.24	43.09	34.21	28.00	22.68	19.92	16.25	14.01	7.650
1.80V/cell	305.8	230.9	187.3	154.6	123.9	94.0	74.93	46.74	36.58	29.78	24.26	21.21	17.14	14.81	7.710
1.75V/cell	337.4	249.7	202.0	164.7	127.6	96.5	77.99	48.31	37.17	30.37	24.75	21.80	17.44	14.91	7.780
1.70V/cell	361.2	265.9	212.7	171.8	132.0	100.1	80.26	50.09	38.16	31.06	25.34	22.20	17.64	15.12	7.920
1.65V/cell	392.7	284.4	224.4	181.2	138.2	101.6	82.33	51.27	39.54	32.04	25.93	22.59	17.84	15.42	8.020
1.60V/cell	423.1	301.7	236.0	190.9	144.9	105.4	84.79	52.65	40.62	32.93	26.72	22.99	18.04	15.52	8.050