

Motive Battery

Energy Storage Battery

Reserve Battery

Motorcycle Battery



## Energy Storage Battery-AGM-GEL Technology-TNG Series

# TNG2-1000

## (2V 1000Ah)

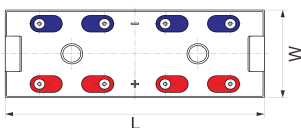
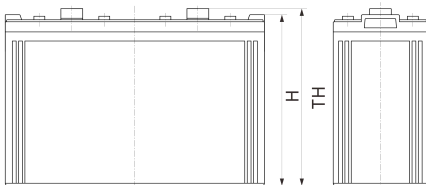
### GENERAL FEATURES

- ◆ Oxygen recombination technology: maintenance-free, no need to add water or acid
- ◆ The patent grid alloy: less gassing, low self-discharge, excellent corrosion resistance
- ◆ Special paste formula: additives for deep discharge, long cycle life
- ◆ High quality AGM separator: extend cycle life and prevent micro short circuit
- ◆ The patent Nano silica electrolytes, extend cycle life and improve the deep discharge performance
- ◆ ABS container: increase the strength of battery (Flame-retardant ABS UL94-V0 is optional)

### Dimension

Unit:mm

Length	470±2mm / 18.5inch
Width	170±2mm / 6.69inch
Container Height	330±3mm / 12.99inch
Total Height	341.5±3mm / 13.44inch



### Application

- ◆ Renewable energy system
- ◆ Hybrid solar power system
- ◆ Uninterrupted Power Supply ( UPS )
- ◆ Communications and electric equipment
- ◆ Emergency lighting equipment
- ◆ Fire alarm and security systems
- ◆ Control and other automation equipment
- ◆ Emergency power supply ( EPS )
- ◆ Various power toy and hobby equipment
- ◆ Lighting equipment



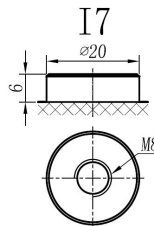
### Terminal

Unit:mm

Terminal Type: I7

### Weight

65kg 143.3lbs



This document is subject to change without prior notification

Motive Battery Energy Storage Battery Reserve Battery Motorcycles Battery

## TNG2-1000

### Specification

<b>Nominal Voltage</b>	2V	
	1072Ah	20hr Rate(1.80V/cell)
	1000Ah	10hr Rate(1.80V/cell)
<b>Rated Capacity(25°C)</b>	870Ah	5hr Rate(1.75V/cell)
	776Ah	3hr Rate(1.70V/cell)
	607Ah	1hr Rate(1.60V/cell)
<b>Container Material</b>	ABS ( Flame-retardant ABS UL94-V0 is optional )	
<b>Operating Temperature Range</b>	<b>Discharge</b>	-20 ~ +50°C
	<b>Charge</b>	0 ~ +40°C
	<b>Storage</b>	-15 ~ +40°C
<b>Capacity Effected by Temperature</b>	<b>40°C / 104°F</b>	106%
	<b>25°C / 77°F</b>	100%
	<b>0°C / 32°F</b>	86%
	<b>-10°C / 14°F</b>	65%
<b>Charge Voltage</b>	<b>Float Voltage</b>	2.25 -2.30V/cell@25°C, Tem. Coefficient: -3mV/cell/°C
	<b>Equalize Voltage</b>	2.35 -2.40V/cell@25°C, Tem. Coefficient: -3mV/cell/°C
	<b>Cycle Voltage</b>	2.40 -2.50V/cell@25°C, Tem. Coefficient: -5mV/cell/°C
<b>Max Charging Current</b>	300A (0.3C)	
<b>Max. Discharge Current (5S)</b>	9600A	
<b>Internal Resistance</b>	0.4mΩ	
<b>Self Discharge</b>	<3%, TN series stored at 25 °C require a supplementary charge every six months, the charging interval would shrink when the ambient temperature went higher	

### Discharge Performance

Constant Current Discharge Table (25°C/77°F) Unit: A											
F.V/Time	30min	45min	1h	2h	3h	4h	5h	6h	8h	10h	20h
1.85V/cell	752.2	604.8	498.9	299.6	231.65	190.26	161.96	141.49	113.99	95.60	51.766
1.80V/cell	807.2	636.3	529.9	316.1	242.95	198.76	168.76	147.79	118.39	100.00	53.604
1.75V/cell	854.7	669.0	552.9	329.2	251.94	205.45	173.96	151.28	120.59	101.10	54.114
1.70V/cell	896.8	694.2	572.3	338.9	258.64	209.95	176.96	153.98	122.49	102.10	54.727
1.65V/cell	940.8	724.4	592.9	349.1	264.24	214.45	180.76	156.68	124.29	103.40	55.339
1.60V/cell	973.1	744.0	606.9	357.4	269.94	217.45	183.36	158.78	125.89	104.60	56.054

Constant Power Discharge Table (25°C/77°F) Unit: W											
F.V/Time	30min	45min	1h	2h	3h	4h	5h	6h	8h	10h	20h
1.85V/cell	1437.5	1146.8	951.7	574.8	446.36	367.87	314.63	277.08	224.16	190.09	100.900
1.80V/cell	1530.0	1198.6	1005.2	603.5	466.08	383.06	326.46	288.28	232.09	198.80	104.400
1.75V/cell	1607.9	1252.8	1044.2	626.1	482.05	394.69	335.33	294.22	235.95	200.50	105.300
1.70V/cell	1673.0	1291.0	1075.0	641.8	492.89	401.69	340.16	298.98	239.42	202.40	106.300
1.65V/cell	1741.8	1339.6	1107.5	658.2	501.47	408.89	346.18	303.24	242.20	204.60	107.500
1.60V/cell	1783.7	1363.0	1125.8	669.8	509.56	412.83	349.83	306.41	244.87	206.71	108.600

动力电池

储能电池

备用电池

摩托车电池



### 储能电池-AGM-凝胶技术-TNG系列

# TNG2-1000

## (2V 1000Ah)

### 产品特点

- ◆ 阀控式免维护设计，寿命期间无需加水或加酸
- ◆ 专利稀土合金板栅，减少气体产生，自放电率低，抗腐蚀能力出众
- ◆ 特制组成配方，添加特殊试剂，增进深放电性能，延长循环寿命
- ◆ 高质量AGM隔板：防止微短路，延长循环寿命
- ◆ 纳米硅胶专利电解质，延长循环寿命，增进深放电性能
- ◆ ABS壳盖：电池外壳强度高（阻燃壳体UL94-V0可选）



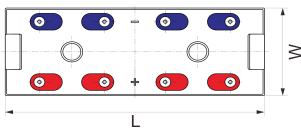
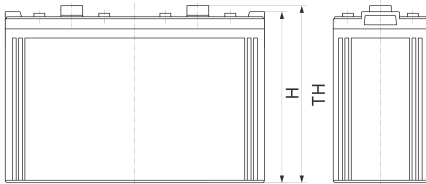
### 产品应用

- ◆ 可再生能源系统
- ◆ 太阳能混合动力系统
- ◆ 不间断电源 (UPS)
- ◆ 通信及电力设备
- ◆ 应急照明系统
- ◆ 安防及火灾报警系统
- ◆ 机械自动化控制设备
- ◆ 应急电源 (EPS)
- ◆ 各式电动玩具及娱乐设施
- ◆ 照明设备

### 尺寸

单个尺寸

长	470±2mm / 18.5inch
宽	170±2mm / 6.69inch
高	330±3mm / 12.99inch
总高	341.5±3mm / 13.44inch



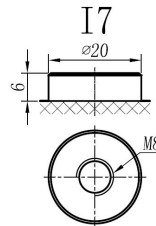
### 端子类型

单位:mm

端子类型 I7

### 重量

65kg 143.3lbs



内容如有改动，恕不另行通知

动力电池

储能电池



备用电池

摩托车电池

## TNG2-1000

### 规格书

额定电压	2V	
容量 (25°C)	1072Ah	20hr Rate(1.80V/cell)
	1000Ah	10hr Rate(1.80V/cell)
	870Ah	5hr Rate(1.75V/cell)
	776Ah	3hr Rate(1.70V/cell)
	607Ah	1hr Rate(1.60V/cell)
壳体材料	ABS (阻燃ABS壳体可选)	
使用温度范围	放电	-20 ~ +50°C
	充电	0 ~ +40°C
	储存	-15 ~ +40°C
不同温度下电池容量系数	40°C / 104°F	106%
	25°C / 77°F	100%
	0°C / 32°F	86%
	-10°C / 14°F	65%
充电电压	浮充	2.25 -2.30V/单格@25°C, 温度补偿系数: -3mV/单格/°C
	均充	2.35 -2.40V/单格@25°C, 温度补偿系数: -3mV/单格/°C
	循环使用	2.40 -2.50V/单格@25°C, 温度补偿系数: -5mV/单格/°C
最大充电电流	300A (0.3C)	
最大放电电流 (5S)	9600A	
电阻	0.4mΩ	
自放电	<3%, TN系列储存在25°C时需每6个月进行一次补充充电, 环境温度更高时则充电间隔时间越短	

### 放电性能

恒电流放电表 (25°C/77°F) 单位: A											
F.V/Time	30min	45min	1h	2h	3h	4h	5h	6h	8h	10h	20h
1.85V/cell	752.2	604.8	498.9	299.6	231.65	190.26	161.96	141.49	113.99	95.60	51.766
1.80V/cell	807.2	636.3	529.9	316.1	242.95	198.76	168.76	147.79	118.39	100.00	53.604
1.75V/cell	854.7	669.0	552.9	329.2	251.94	205.45	173.96	151.28	120.59	101.10	54.114
1.70V/cell	896.8	694.2	572.3	338.9	258.64	209.95	176.96	153.98	122.49	102.10	54.727
1.65V/cell	940.8	724.4	592.9	349.1	264.24	214.45	180.76	156.68	124.29	103.40	55.339
1.60V/cell	973.1	744.0	606.9	357.4	269.94	217.45	183.36	158.78	125.89	104.60	56.054

恒功率放电表 (25°C/77°F) 单位: W											
F.V/Time	30min	45min	1h	2h	3h	4h	5h	6h	8h	10h	20h
1.85V/cell	1437.5	1146.8	951.7	574.8	446.36	367.87	314.63	277.08	224.16	190.09	100.900
1.80V/cell	1530.0	1198.6	1005.2	603.5	466.08	383.06	326.46	288.28	232.09	198.80	104.400
1.75V/cell	1607.9	1252.8	1044.2	626.1	482.05	394.69	335.33	294.22	235.95	200.50	105.300
1.70V/cell	1673.0	1291.0	1075.0	641.8	492.89	401.69	340.16	298.98	239.42	202.40	106.300
1.65V/cell	1741.8	1339.6	1107.5	658.2	501.47	408.89	346.18	303.24	242.20	204.60	107.500
1.60V/cell	1783.7	1363.0	1125.8	669.8	509.56	412.83	349.83	306.41	244.87	206.71	108.600