

Motive Battery

Energy Storage Battery

Reserve Battery

Motorcycle Battery



Maintenance Free VRLA AGM Battery - Long Life Type

TNL12-120A

(12V 120Ah)

GENERAL FEATURES

- ♦ Oxygen recombination technology: maintenance-free, no need to add water or acid
- ♦ The patent grid alloy: less gassing, low self-discharge, excellent corrosion resistance
- ♦ Long life, low self-discharge rate and high reliability, deep discharge recoverability
- ♦ High quality AGM separator: extend cycle life and prevent micro short circuit
- ♦ ABS container: increase the strength of battery (Flame-retardant ABS UL94-V0 is optional)

Dimension

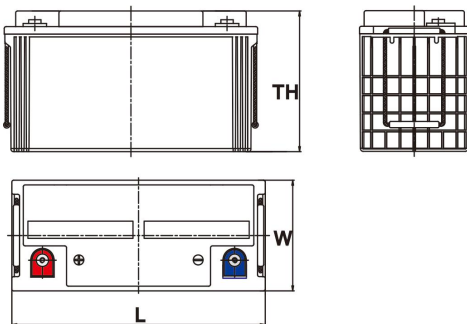
Unit:mm

Length 408±2mm / 16.06inch

Width 177±2mm / 6.97inch

Container Height 224±3mm / 8.82inch

Total Height 224±3mm / 8.82inch



Application

- ♦ Uninterrupted Power Supply (UPS)
- ♦ Communications and electric equipment
- ♦ Emergency lighting equipment
- ♦ Fire alarm and security system
- ♦ Robots, control equipment, and other factory automation equipment
- ♦ Emergency power supply (EPS)
- ♦ Portable VTR/TV, radio and so on
- ♦ Power tools, lawn mowers, vacuum cleaners
- ♦ Cameras and photographic equipment
- ♦ Portable measuring equipment
- ♦ Portable telephone sets
- ♦ Various power toys and hobby equipment
- ♦ Lighting equipment

Terminal

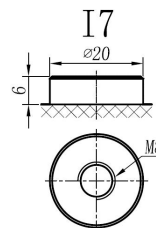
Unit:mm

Terminal Type: I7

Weight

36.6kg

80.92lbs



This document is subject to change without prior notification

Motive Battery

Energy Storage Battery

Reserve Battery

Motorcycle Battery



TNL12-120A

Specificaion

Nominal Voltage	12V	
Rated Capacity(25°C)	124Ah	20hr Rate(1.80V/cell)
	120Ah	10hr Rate(1.80V/cell)
	106Ah	5hr Rate(1.75V/cell)
	100Ah	3hr Rate(1.70V/cell)
	76Ah	1hr Rate(1.60V/cell)
Container Material	ABS (Flame-retardant ABS UL94-V0 is optional)	
Operating Temperature Range	Discharge	-20 ~ +50°C
	Charge	0 ~ +40°C
	Storage	-15 ~ +40°C
Capacity Effected by Temperature	40°C / 104°F	106%
	25°C / 77°F	100%
	0°C / 32°F	86%
	-10°C / 14°F	65%
Charge	Float Voltage	2.23 -2.27V/cell@25°C, Tem.Coefficient : -3mV/cell/°C
	Equalize Voltage	2.35 -2.40V/cell@25°C, Tem.Coefficient : -3mV/cell/°C
	Cycle Voltage	2.40 -2.50V/cell@25°C, Tem.Coefficient : -5mV/cell°C
Max. Charging Current	36A (0.3C)	
Max. Discharge Current (5'	1300A	
Internal Resistance	4mΩ	
Self-Discharge	<3%, TN series stored at 25 °C require a supplementary charge every six months, the charging interval would shrink when the ambient temperature went higher	

Discharge Performance

Constant Current Discharge Table (25°C/77°F) Unit: A

F.V/Time	10min	15min	20min	30min	45min	1h	2h	3h	4h	5h	6h	8h	10h	20h
1.85V/cell	140.5	118.2	104.9	87.0	68.0	58.22	37.70	28.34	23.22	19.53	17.03	13.66	11.640	6.017
1.80V/cell	160.8	132.7	115.9	94.5	73.4	61.45	40.52	30.45	24.68	20.71	18.04	14.38	12.012	6.216
1.75V/cell	182.6	149.6	128.1	102.6	80.1	66.99	42.14	31.67	25.53	21.19	18.61	14.86	12.335	6.330
1.70V/cell	206.3	166.0	141.4	112.1	86.2	70.89	44.40	33.33	26.67	22.41	19.50	15.48	12.808	6.418
1.67V/cell	221.5	177.7	150.5	118.3	91.3	73.32	46.03	34.67	27.73	23.12	20.18	16.01	13.168	6.503
1.60V/cell	243.7	194.6	163.4	126.2	94.8	75.52	47.20	35.57	28.34	23.68	20.60	16.29	13.444	6.561

Constant Power Discharge Table (25°C/77°F) Unit: W

F.V/Time	10min	15min	20min	30min	45min	1h	2h	3h	4h	5h	6h	8h	10h	20h
1.85V/cell	262.4	222.9	199.8	167.5	130.3	111.90	72.94	55.05	45.23	38.15	33.52	27.01	23.268	12.427
1.80V/cell	296.8	247.0	217.7	179.2	139.5	117.49	77.89	58.80	47.82	40.25	35.37	28.33	23.975	12.840
1.75V/cell	331.7	275.0	238.3	193.1	150.7	127.49	80.70	60.92	49.30	41.06	36.37	29.22	24.590	13.149
1.70V/cell	366.3	300.9	261.0	209.7	161.8	134.49	84.84	64.00	51.41	43.35	38.06	30.42	25.517	13.476
1.67V/cell	389.7	319.7	275.6	219.5	169.7	138.12	87.45	66.29	53.24	44.57	39.26	31.37	26.190	13.878
1.60V/cell	419.1	344.4	296.2	232.6	175.4	141.50	89.25	67.69	54.25	45.50	39.96	31.85	26.695	14.082

□ 动力电池

■ 储能电池

■ 备用电池

□ 摩托车电池



阀控式免维护AGM电池-长寿命系列

TNL12-120A

(12V 120Ah)

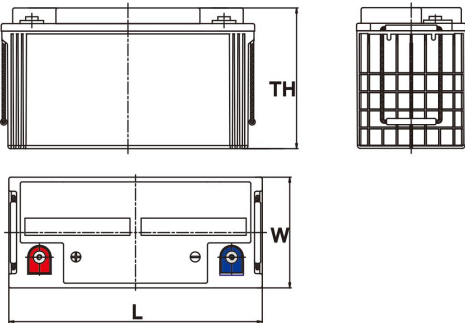
产品特点

- ◆ 阀控式免维护设计，寿命期间无需加水或加酸
- ◆ 专利稀土合金板栅，减少气体产生，自放电率低，抗腐蚀能力出众
- ◆ 电池寿命长，自放电率低具有高可靠性，深放电恢复能力出色
- ◆ 高质量AGM隔板：防止微短路，延长循环寿命
- ◆ ABS壳盖：电池外壳强度高（阻燃壳体UL94-V0可选）

尺寸

单个尺寸

长	408±2mm
宽	177±2mm
高	224±3mm
总高	224±3mm



产品应用

- ◆ 不间断电源(UPS)
- ◆ 通信和电力设备
- ◆ 紧急照明设备
- ◆ 火灾报警及安防系统
- ◆ 机器人、控制设备及其他机械自动化设备
- ◆ 应急电源系统
- ◆ 便携式音频设备
- ◆ 电动工具，割草机，真空吸尘器
- ◆ 照相设备
- ◆ 便携式测量工具
- ◆ 便携式通话设备
- ◆ 各式电动玩具及娱乐设施
- ◆ 照明设备



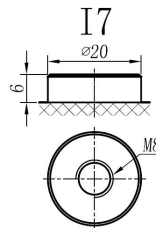
端子类型

单位:mm

端子类型 I7

重量

36.6kg 80.92lbs



ISO9001 ISO14001 OHSAS18001

内容如有改动，恕不另行通知

动力电池

储能电池

备用电池

摩托车电池



TNL12-120A

规格书

额定电压	12V	
容量(25°C)	124Ah	20hr Rate(1.80V/cell)
	120Ah	10hr Rate(1.80V/cell)
	106Ah	5hr Rate(1.75V/cell)
	100Ah	3hr Rate(1.70V/cell)
	76Ah	1hr Rate(1.60V/cell)
壳体材料	ABS (阻燃ABS壳体可选)	
使用温度范围	放电	-20 ~ +50°C
	充电	0 ~ +40°C
	储存	-15 ~ +40°C
不同温度下 电池容量系数	40°C / 104°F	106%
	25°C / 77°F	100%
	0°C / 32°F	86%
	-10°C / 14°F	65%
充电	浮充电压	2.23 -2.27V/单格@25°C, 温度补偿系数: -3mV/单格/°C
	均充电压	2.35 -2.40V/单格@25°C, 温度补偿系数: -3mV/单格/°C
	循环使用电压	2.40 -2.50V/单格@25°C, 温度补偿系数: -5mV/单格/°C
最大充电电流	36A (0.3C)	
最大放电电流 (5S)	1300A	
电阻	4mΩ	
自放电	<3%, TN系列储存在25°C 时需每6个月进行一次补充充电, 环境温度更高时则充电间隔时间越短	

放电性能

恒电流放电表 (25°C/77°F) 单位: A														
F.V/Time	10min	15min	20min	30min	45min	1h	2h	3h	4h	5h	6h	8h	10h	20h
1.85V/cell	140.5	118.2	104.9	87.0	68.0	58.22	37.70	28.34	23.22	19.53	17.03	13.66	11.640	6.017
1.80V/cell	160.8	132.7	115.9	94.5	73.4	61.45	40.52	30.45	24.68	20.71	18.04	14.38	12.012	6.216
1.75V/cell	182.6	149.6	128.1	102.6	80.1	66.99	42.14	31.67	25.53	21.19	18.61	14.86	12.335	6.330
1.70V/cell	206.3	166.0	141.4	112.1	86.2	70.89	44.40	33.33	26.67	22.41	19.50	15.48	12.808	6.418
1.67V/cell	221.5	177.7	150.5	118.3	91.3	73.32	46.03	34.67	27.73	23.12	20.18	16.01	13.168	6.503
1.60V/cell	243.7	194.6	163.4	126.2	94.8	75.52	47.20	35.57	28.34	23.68	20.60	16.29	13.444	6.561

恒功率放电表 (25°C/77°F) 单位: W														
F.V/Time	10min	15min	20min	30min	45min	1h	2h	3h	4h	5h	6h	8h	10h	20h
1.85V/cell	262.4	222.9	199.8	167.5	130.3	111.90	72.94	55.05	45.23	38.15	33.52	27.01	23.268	12.427
1.80V/cell	296.8	247.0	217.7	179.2	139.5	117.49	77.89	58.80	47.82	40.25	35.37	28.33	23.975	12.840
1.75V/cell	331.7	275.0	238.3	193.1	150.7	127.49	80.70	60.92	49.30	41.06	36.37	29.22	24.590	13.149
1.70V/cell	366.3	300.9	261.0	209.7	161.8	134.49	84.84	64.00	51.41	43.35	38.06	30.42	25.517	13.476
1.67V/cell	389.7	319.7	275.6	219.5	169.7	138.12	87.45	66.29	53.24	44.57	39.26	31.37	26.190	13.878
1.60V/cell	419.1	344.4	296.2	232.6	175.4	141.50	89.25	67.69	54.25	45.50	39.96	31.85	26.695	14.082