

Motive Battery

Energy Storage Battery

Reserve Battery

Motorcycle Battery



## Maintenance Free VRLA AGM Battery - Long Life Type

# TNL12-150

(12V 150Ah)

### GENERAL FEATURES

- ♦ Oxygen recombination technology: maintenance-free, no need to add water or acid
- ♦ The patent grid alloy: less gassing, low self-discharge, excellent corrosion resistance
- ♦ Long life, low self-discharge rate and high reliability, deep discharge recoverability
- ♦ High quality AGM separator: extend cycle life and prevent micro short circuit
- ♦ ABS container: increase the strength of battery (Flame-retardant ABS UL94-V0 is optional)

### Dimension

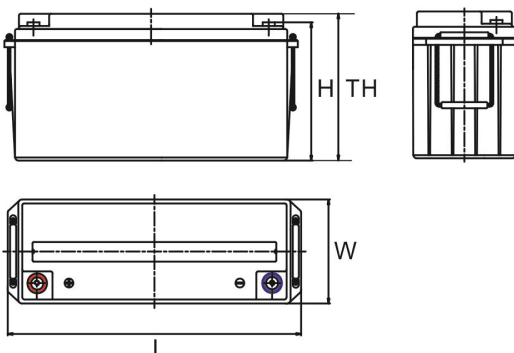
Unit:mm

Length 480±2mm / 18.9inch

Width 170±2mm / 6.69inch

Container Height 240±3mm / 9.45inch

Total Height 240±3mm / 9.45inch



### Application

- ♦ Uninterrupted Power Supply ( UPS )
- ♦ Communications and electric equipment
- ♦ Emergency lighting equipment
- ♦ Fire alarm and security system
- ♦ Robots, control equipment, and other factory automation equipment
- ♦ Emergency power supply ( EPS )
- ♦ Portable VTR/TV, radio and so on
- ♦ Power tools, lawn mowers, vacuum cleaners
- ♦ Cameras and photographic equipment
- ♦ Portable measuring equipment
- ♦ Portable telephone sets
- ♦ Various power toys and hobby equipment
- ♦ Lighting equipment

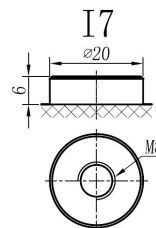
### Terminal

Unit:mm

Terminal Type: I7

### Weight

48.2kg 106.57lbs



ISO9001 ISO14001 OHSAS18001

This document is subject to change without prior notification

Motive Battery

Energy Storage Battery

Reserve Battery

Motorcycle Battery



## TNL12-150

### Specificaion

<b>Nominal Voltage</b>	12V	
<b>Rated Capacity(25°C)</b>	158Ah	20hr Rate(1.80V/cell )
	150Ah	10hr Rate(1.80V/cell )
	132Ah	5hr Rate(1.75V/cell )
	125Ah	3hr Rate(1.70V/cell )
	94Ah	1hr Rate(1.60V/cell )
<b>Container Material</b>	ABS ( Flame-retardant ABS UL94-V0 is optional )	
<b>Operating Temperature Range</b>	<b>Discharge</b>	-20 ~ +50°C
	<b>Charge</b>	0 ~ +40°C
	<b>Storage</b>	-15 ~ +40°C
<b>Capacity Effected by Temperature</b>	<b>40°C / 104°F</b>	106%
	<b>25°C / 77°F</b>	100%
	<b>0°C / 32°F</b>	86%
	<b>-10°C / 14°F</b>	65%
<b>Charge</b>	<b>Float Voltage</b>	2.23 -2.27V/cell@25°C, Tem.Coefficient : -3mV/cell/°C
	<b>Equalize Voltage</b>	2.35 -2.40V/cell@25°C, Tem.Coefficient : -3mV/cell/°C
	<b>Cycle Voltage</b>	2.40 -2.50V/cell@25°C, Tem.Coefficient : -5mV/cell°C
<b>Max. Charging Current</b>	45A ( 0.3C )	
<b>Max. Discharge Current (5!)</b>	1500A	
<b>Internal Resistance</b>	3.5mΩ	
<b>Self-Discharge</b>	<3%, TN series stored at 25 °C require a supplementary charge every six months, the charging interval would shrink when the ambient temperature went higher	

### Discharge Performance

Constant Current Discharge Table (25°C/77°F) Unit: A

F.V/Time	10min	15min	20min	30min	45min	1h	2h	3h	4h	5h	6h	8h	10h	20h
1.85V/cell	175.7	147.7	131.1	108.7	85.1	72.78	47.10	35.42	29.03	24.46	21.31	17.07	14.515	7.668
1.80V/cell	201.0	165.9	144.9	118.1	91.8	76.84	50.65	38.06	30.86	25.88	22.52	17.98	15.015	7.878
1.75V/cell	228.3	187.0	160.2	128.3	100.1	83.74	52.68	39.59	31.87	26.49	23.23	18.58	15.415	8.238
1.70V/cell	257.9	207.5	176.8	140.0	107.8	88.61	55.52	41.72	33.39	28.01	24.34	19.39	16.016	8.448
1.67V/cell	276.9	222.1	188.1	147.8	114.1	91.65	57.55	43.34	34.61	28.93	25.25	20.00	16.416	8.709
1.60V/cell	304.6	243.2	204.3	157.8	118.6	94.40	58.97	44.46	35.42	29.64	25.76	20.40	16.817	8.849

Constant Power Discharge Table (25°C/77°F) Unit: W

F.V/Time	10min	15min	20min	30min	45min	1h	2h	3h	4h	5h	6h	8h	10h	20h
1.85V/cell	328.0	278.7	249.7	209.4	163.0	139.84	91.19	68.77	56.56	47.65	41.94	33.73	29.129	15.516
1.80V/cell	371.0	308.7	272.1	223.9	174.4	146.85	97.40	73.47	59.76	50.35	44.24	35.44	29.930	16.016
1.75V/cell	414.6	343.7	297.8	241.3	188.4	159.36	100.90	76.18	61.66	51.35	45.45	36.54	30.731	16.416
1.70V/cell	457.9	376.1	326.3	262.1	202.2	168.07	106.01	79.98	64.26	54.15	47.55	38.04	31.932	16.817
1.67V/cell	487.2	399.6	344.5	274.4	212.1	172.67	109.31	82.88	66.57	55.76	49.05	39.24	32.733	17.317
1.60V/cell	523.9	430.5	370.3	290.7	219.2	176.88	111.51	84.58	67.87	56.86	49.95	39.84	33.333	17.618

☐ 动力电池

■ 储能电池

■ 备用电池

☐ 摩托车电池



## 阀控式免维护AGM电池-长寿命系列

# TNL12-150

(12V 150Ah)

### 产品特点

- ◆ 阀控式免维护设计，寿命期间无需加水或加酸
- ◆ 专利稀土合金板栅，减少气体产生，自放电率低，抗腐蚀能力出众
- ◆ 电池寿命长，自放电率低具有高可靠性，深放电恢复能力出色
- ◆ 高质量AGM隔板：防止微短路，延长循环寿命
- ◆ ABS壳盖：电池外壳强度高（阻燃壳体UL94-V0可选）



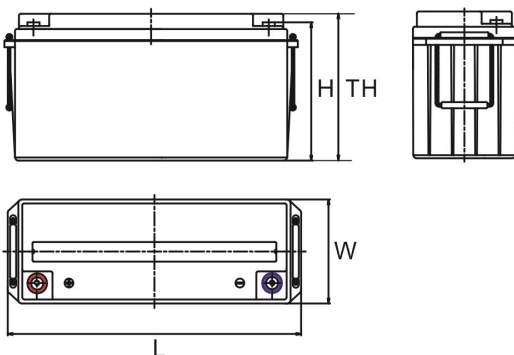
### 产品应用

- ◆ 不间断电源(UPS)
- ◆ 通信和电力设备
- ◆ 紧急照明设备
- ◆ 火灾报警及安防系统
- ◆ 机器人、控制设备及其他机械自动化设备
- ◆ 应急电源系统
- ◆ 便携式音频设备
- ◆ 电动工具，割草机，真空吸尘器
- ◆ 照相设备
- ◆ 便携式测量工具
- ◆ 便携式通话设备
- ◆ 各式电动玩具及娱乐设施
- ◆ 照明设备

### 尺寸

单个尺寸

长	480±2mm
宽	170±2mm
高	240±3mm
总高	240±3mm



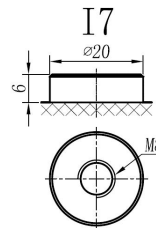
### 端子类型

单位:mm

端子类型 I7

### 重量

48.2kg 106.57lbs



ISO9001 ISO14001 OHSAS18001

内容如有改动，恕不另行通知

动力电池

储能电池

备用电池

摩托车电池



## TNL12-150

### 规格书

额定电压	12V	
容量(25°C)	158Ah	20hr Rate(1.80V/cell)
	150Ah	10hr Rate(1.80V/cell)
	132Ah	5hr Rate(1.75V/cell)
	125Ah	3hr Rate(1.70V/cell)
	94Ah	1hr Rate(1.60V/cell)
壳体材料	ABS (阻燃ABS壳体可选)	
使用温度范围	放电	-20 ~ +50°C
	充电	0 ~ +40°C
	储存	-15 ~ +40°C
不同温度下 电池容量系数	40°C / 104°F	106%
	25°C / 77°F	100%
	0°C / 32°F	86%
	-10°C / 14°F	65%
充电	浮充电压	2.23 -2.27V/单格@25°C, 温度补偿系数: -3mV/单格/°C
	均充电压	2.35 -2.40V/单格@25°C, 温度补偿系数: -3mV/单格/°C
	循环使用电压	2.40 -2.50V/单格@25°C, 温度补偿系数: -5mV/单格/°C
最大充电电流	45A (0.3C)	
最大放电电流 (5S)	1500A	
电阻	3.5mΩ	
自放电	<3%, TN系列储存在25°C 时需每6个月进行一次补充充电, 环境温度更高时则充电间隔时间越短	

### 放电性能

恒电流放电表 (25°C/77°F) 单位: A														
F.V/Time	10min	15min	20min	30min	45min	1h	2h	3h	4h	5h	6h	8h	10h	20h
1.85V/cell	175.7	147.7	131.1	108.7	85.1	72.78	47.10	35.42	29.03	24.46	21.31	17.07	14.515	7.668
1.80V/cell	201.0	165.9	144.9	118.1	91.8	76.84	50.65	38.06	30.86	25.88	22.52	17.98	15.015	7.878
1.75V/cell	228.3	187.0	160.2	128.3	100.1	83.74	52.68	39.59	31.87	26.49	23.23	18.58	15.415	8.238
1.70V/cell	257.9	207.5	176.8	140.0	107.8	88.61	55.52	41.72	33.39	28.01	24.34	19.39	16.016	8.448
1.67V/cell	276.9	222.1	188.1	147.8	114.1	91.65	57.55	43.34	34.61	28.93	25.25	20.00	16.416	8.709
1.60V/cell	304.6	243.2	204.3	157.8	118.6	94.40	58.97	44.46	35.42	29.64	25.76	20.40	16.817	8.849

恒功率放电表 (25°C/77°F) 单位: W														
F.V/Time	10min	15min	20min	30min	45min	1h	2h	3h	4h	5h	6h	8h	10h	20h
1.85V/cell	328.0	278.7	249.7	209.4	163.0	139.84	91.19	68.77	56.56	47.65	41.94	33.73	29.129	15.516
1.80V/cell	371.0	308.7	272.1	223.9	174.4	146.85	97.40	73.47	59.76	50.35	44.24	35.44	29.930	16.016
1.75V/cell	414.6	343.7	297.8	241.3	188.4	159.36	100.90	76.18	61.66	51.35	45.45	36.54	30.731	16.416
1.70V/cell	457.9	376.1	326.3	262.1	202.2	168.07	106.01	79.98	64.26	54.15	47.55	38.04	31.932	16.817
1.67V/cell	487.2	399.6	344.5	274.4	212.1	172.67	109.31	82.88	66.57	55.76	49.05	39.24	32.733	17.317
1.60V/cell	523.9	430.5	370.3	290.7	219.2	176.88	111.51	84.58	67.87	56.86	49.95	39.84	33.333	17.618