

Motive Battery

Energy Storage Battery

Reserve Battery

Motorcycle Battery



Maintenance Free VRLA AGM Battery - Long Life Type

TNL2-1000

(2V 1000Ah)

GENERAL FEATURES

- ◆ Cycle or standby (or float) application
- ◆ Design life is 12~16 years at 25°C under standby application, deep discharge recoverability
- ◆ It has safety, low resistance so recharge is easy and energy output is more remarkable
- ◆ Deep discharge recoverability
- ◆ Strictly manufacture process control and high consistency
- ◆ ISO9001, ISO14001 certified
- ◆ UL, IEC60896-21&22, TLC, CE and European council Directive 2006/66/EC and its amendment (2008/12/EC) certification

Dimension

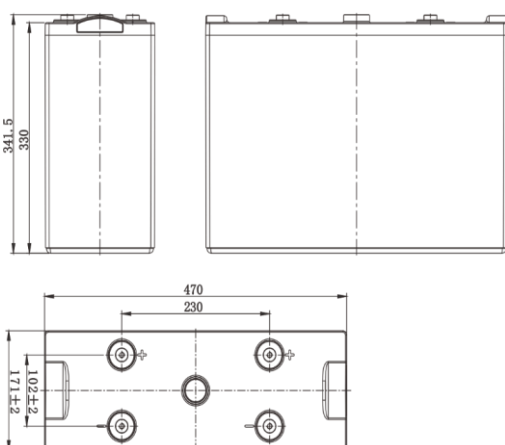
Unit:mm

Length 470±2mm / 18.5inch

Width 170±2mm / 6.69inch

Container Height 330±3mm / 12.99inch

Total Height 341.5±3mm / 13.44inch



Application

- ◆ Uninterrupted Power Supply (UPS)
- ◆ Communications and electric equipment
- ◆ Emergency lighting equipment
- ◆ Fire alarm and security system
- ◆ Robots, control equipment, and other factory automation equipment
- ◆ Emergency power supply (EPS)
- ◆ Portable VTR/TV, radio and so on
- ◆ Power tools, lawn mowers, vacuum cleaners
- ◆ Cameras and photographic equipment
- ◆ Portable measuring equipment
- ◆ Portable telephone sets
- ◆ Various power toys and hobby equipment
- ◆ Lighting equipment

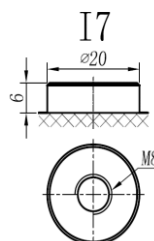
Terminal

Unit:mm

Terminal Type: I7

Weight

58.5kg 128.97lbs



ISO9001 ISO14001 OHSAS18001

This document is subject to change without prior notification

Motive Battery Energy Storage Battery

Reserve Battery Motorcycle Battery



TNL2-1000

Specificaion

Nominal Voltage	2V	
Rated Capacity(25°C)	1069Ah	20hr Rate(1.80V/cell)
	1001Ah	10hr Rate(1.80V/cell)
	901Ah	5hr Rate(1.75V/cell)
	808Ah	3hr Rate(1.70V/cell)
	610Ah	1hr Rate(1.60V/cell)
Container Material	ABS (Flame-retardant ABS UL94-V0 is optional)	
Operating Temperature Range	Discharge	-20 ~ +50°C
	Charge	0 ~ +40°C
	Storage	-15 ~ +40°C
Capacity Effected by Temperature	40°C / 104°F	106%
	25°C / 77°F	100%
	0°C / 32°F	86%
	-10°C / 14°F	65%
Charge	Float Voltage	2.23 -2.27V/cell@25°C, Tem.Coefficient : -3mV/cell/°C
	Equalize Voltage	2.35 -2.40V/cell@25°C, Tem.Coefficient : -3mV/cell/°C
	Cycle Voltage	2.40 -2.50V/cell@25°C, Tem.Coefficient : -5mV/cell°C
Max. Charging Current	300A (0.3C)	
Max. Discharge Current (5S)	8000A	
Internal Resistance	0.45mΩ	
Self-Discharge	<3%, TN series stored at 25 °C require a supplementary charge every six months, the charging interval would shrink when the ambient temperature went higher	

Discharge Performance

Constant Current Discharge Table (25°C/77°F) Unit: A

F.V/Time	30min	45min	1h	2h	3h	4h	5h	6h	8h	10h	20h
1.85V/cell	751.2	610.6	509.12	315.67	240.86	197.01	167.68	145.74	116.66	96.396	51.552
1.80V/cell	805.9	642.4	532.37	329.88	252.74	205.74	174.78	152.31	121.71	100.100	53.453
1.75V/cell	853.5	675.5	555.51	343.07	261.16	212.74	180.16	155.94	124.13	101.401	53.654
1.70V/cell	895.5	701.0	575.00	356.77	269.28	217.41	183.21	158.67	126.25	102.603	54.254
1.67V/cell	939.3	731.5	595.60	368.45	275.37	222.08	187.17	161.40	128.17	103.804	54.855
1.60V/cell	/	751.1	609.71	375.55	280.14	225.23	189.91	163.62	130.09	105.305	55.255

Constant Power Discharge Table (25°C/77°F) Unit: W

F.V/Time	30min	45min	1h	2h	3h	4h	5h	6h	8h	10h	20h
1.85V/cell	1435.4	1157.9	971.17	605.50	464.26	380.98	325.83	285.49	229.43	191.692	102.703
1.80V/cell	1527.8	1210.1	1009.91	629.73	484.78	396.70	338.04	397.20	238.64	198.799	106.206
1.75V/cell	1605.6	1265.0	1049.15	652.35	499.70	408.71	347.25	303.20	242.74	201.101	106.506
1.70V/cell	1670.5	1303.5	1080.08	675.57	513.31	415.92	352.25	308.01	246.75	203.403	107.708
1.67V/cell	1739.2	1352.7	1112.61	694.69	522.62	423.42	358.46	312.41	249.85	205.405	108.609
1.60V/cell	/	1376.0	1130.93	703.70	528.83	427.53	362.16	315.72	252.95	208.008	109.209