

Motive Battery

Energy Storage Battery

Reserve Battery

Motorcycle Battery



## Maintenance Free VRLA AGM Battery - Long Life Type

# TNL6-100

(6V 100Ah)

### GENERAL FEATURES

- ◆ Oxygen recombination technology: maintenance-free, no need to add water or acid
- ◆ The patent grid alloy: less gassing, low self-discharge, excellent corrosion resistance
- ◆ Long life, low self-discharge rate and high reliability, deep discharge recoverability
- ◆ High quality AGM separator: extend cycle life and prevent micro short circuit
- ◆ ABS container: increase the strength of battery (Flame-retardant ABS UL94-V0 is optional)

### Dimension

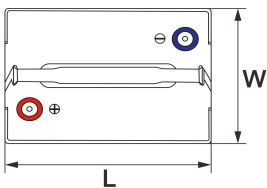
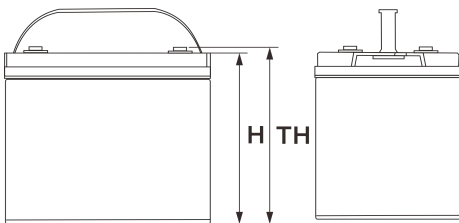
Unit:mm

Length 195±2mm / 7.68inch

Width 170±2mm / 6.69inch

Container Height 206.5±3mm / 8.13inch

Total Height 212.5±3mm / 8.37inch



### Application

- ◆ Uninterrupted Power Supply ( UPS )
- ◆ Communications and electric equipment
- ◆ Emergency lighting equipment
- ◆ Fire alarm and security system
- ◆ Robots, control equipment, and other factory automation equipment
- ◆ Emergency power supply ( EPS )
- ◆ Portable VTR/TV, radio and so on
- ◆ Power tools, lawn mowers, vacuum cleaners
- ◆ Cameras and photographic equipment
- ◆ Portable measuring equipment
- ◆ Portable telephone sets
- ◆ Various power toys and hobby equipment
- ◆ Lighting equipment

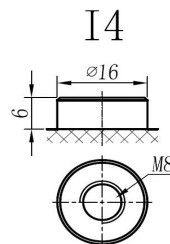
### Terminal

Unit:mm

Terminal Type: I4

### Weight

16.5kg 36.48lbs



This document is subject to change without prior notification

Motive Battery

Energy Storage Battery

Reserve Battery

Motorcycle Battery



## TNL6-100

### Specificaion

<b>Nominal Voltage</b>	6V	
<b>Rated Capacity(25°C)</b>	107Ah	20hr Rate(1.80V/cell )
	100Ah	10hr Rate(1.80V/cell )
	88Ah	5hr Rate(1.75V/cell )
	83Ah	3hr Rate(1.70V/cell )
	63Ah	1hr Rate(1.60V/cell )
<b>Container Material</b>	ABS ( Flame-retardant ABS UL94-V0 is optional )	
<b>Operating Temperature Range</b>	<b>Discharge</b>	-20 ~ +50°C
	<b>Charge</b>	0 ~ +40°C
	<b>Storage</b>	-15 ~ +40°C
<b>Capacity Effected by Temperature</b>	<b>40°C / 104°F</b>	106%
	<b>25°C / 77°F</b>	100%
	<b>0°C / 32°F</b>	86%
	<b>-10°C / 14°F</b>	65%
<b>Charge</b>	<b>Float Voltage</b>	2.23 -2.27V/cell@25°C, Tem.Coefficient : -3mV/cell/°C
	<b>Equalize Voltage</b>	2.35 -2.40V/cell@25°C, Tem.Coefficient : -3mV/cell/°C
	<b>Cycle Voltage</b>	2.40 -2.50V/cell@25°C, Tem.Coefficient : -5mV/cell°C
<b>Max. Charging Current</b>	30A ( 0.3C )	
<b>Max. Discharge Current (5S)</b>	1200A	
<b>Internal Resistance</b>	5mΩ	
<b>Self-Discharge</b>	<3%, TN series stored at 25 °C require a supplementary charge every six months, the charging interval would shrink when the ambient temperature went higher	

### Discharge Performance

Constant Current Discharge Table (25°C/77°F) Unit: A

F.V/Time	10min	15min	20min	30min	45min	1h	2h	3h	4h	5h	6h	8h	10h	20h
1.85V/cell	117.1	98.5	87.4	72.5	56.7	48.52	31.41	23.62	19.35	16.28	14.19	11.39	9.700	5.175
1.80V/cell	134.0	110.6	96.6	78.7	61.2	51.21	33.77	25.38	20.57	17.26	15.04	11.98	10.010	5.355
1.75V/cell	152.2	124.7	106.8	85.5	66.7	55.83	35.12	26.39	21.28	17.66	15.51	12.38	10.279	5.491
1.70V/cell	171.9	138.3	117.9	93.4	71.9	59.07	37.00	27.78	22.23	18.68	16.25	12.90	10.674	5.631
1.67V/cell	184.6	148.1	125.4	98.6	76.1	61.10	38.36	28.89	23.11	19.26	16.82	13.34	10.973	5.806
1.60V/cell	203.1	162.2	136.2	105.2	79.0	62.93	39.33	29.64	23.62	19.73	17.17	13.57	11.203	5.900

Constant Power Discharge Table (25°C/77°F) Unit: W

F.V/Time	10min	15min	20min	30min	45min	1h	2h	3h	4h	5h	6h	8h	10h	20h
1.85V/cell	218.7	185.8	166.5	139.6	108.6	93.25	60.78	45.87	37.69	31.80	27.93	22.51	19.390	10.356
1.80V/cell	247.3	205.8	181.4	149.3	116.3	97.91	64.91	49.00	39.85	33.55	29.48	23.61	19.979	10.700
1.75V/cell	276.4	229.2	198.5	160.9	125.6	106.25	67.25	50.77	41.09	34.22	30.31	24.35	20.492	10.958
1.70V/cell	305.2	250.7	217.5	174.7	134.8	112.07	70.70	53.34	42.84	36.13	31.71	25.35	21.264	11.230
1.67V/cell	324.8	266.4	229.7	182.9	141.4	115.10	72.88	55.24	44.37	37.14	32.72	26.14	21.825	11.565
1.60V/cell	349.3	287.0	246.8	193.8	146.1	117.92	74.37	56.41	45.21	37.91	33.30	26.54	22.246	11.735

动力电池

储能电池

备用电池

摩托车电池



## 阀控式免维护AGM电池-长寿命系列

# TNL6-100

(6V 100Ah)

### 产品特点

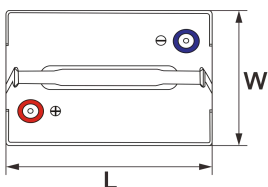
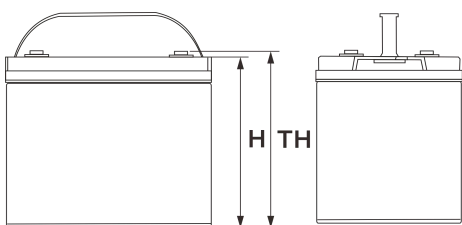
- ◆ 阀控式免维护设计，寿命期间无需加水或加酸
- ◆ 专利稀土合金板栅，减少气体产生，自放电率低，抗腐蚀能力出众
- ◆ 电池寿命长，自放电率低具有高可靠性，深放电恢复能力出色
- ◆ 高质量AGM隔板：防止微短路，延长循环寿命
- ◆ ABS壳盖：电池外壳强度高（阻燃壳体UL94-V0可选）



### 尺寸

单个尺寸

长	195±2mm
宽	170±2mm
高	206.5±3mm
总高	212.5±3mm



### 产品应用

- ◆ 不间断电源(UPS)
- ◆ 通信和电力设备
- ◆ 紧急照明设备
- ◆ 火灾报警及安防系统
- ◆ 机器人、控制设备及其他机械自动化设备
- ◆ 应急电源系统
- ◆ 便携式音频设备
- ◆ 电动工具，割草机，真空吸尘器
- ◆ 照相设备
- ◆ 便携式测量工具
- ◆ 便携式通话设备
- ◆ 各式电动玩具及娱乐设施
- ◆ 照明设备

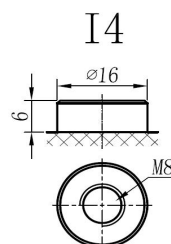
### 端子类型

单位:mm

端子类型 I4

### 重量

16.5kg 36.48lbs



ISO9001 ISO14001 OHSAS18001

内容如有改动，恕不另行通知

动力电池

储能电池

备用电池

摩托车电池



## TNL6-100

### 规格书

额定电压	6V	
容量(25°C)	107Ah	20hr Rate(1.80V/cell)
	100Ah	10hr Rate(1.80V/cell)
	88Ah	5hr Rate(1.75V/cell)
	83Ah	3hr Rate(1.70V/cell)
	63Ah	1hr Rate(1.60V/cell)
壳体材料	ABS (阻燃ABS壳体可选)	
使用温度范围	放电	-20 ~ +50°C
	充电	0 ~ +40°C
	储存	-15 ~ +40°C
不同温度下 电池容量系数	40°C / 104°F	106%
	25°C / 77°F	100%
	0°C / 32°F	86%
	-10°C / 14°F	65%
充电	浮充电压	2.23 -2.27V/单格@25°C, 温度补偿系数: -3mV/单格/°C
	均充电压	2.35 -2.40V/单格@25°C, 温度补偿系数: -3mV/单格/°C
	循环使用电压	2.40 -2.50V/单格@25°C, 温度补偿系数: -5mV/单格/°C
最大充电电流	30A (0.3C)	
最大放电电流 (5S)	1200A	
电阻	5mΩ	
自放电	<3%, TN系列储存在25°C 时需每6个月进行一次补充充电, 环境温度更高时则充电间隔时间越短	

### 放电性能

恒电流放电表 (25°C/77°F) 单位: A														
F.V/Time	10min	15min	20min	30min	45min	1h	2h	3h	4h	5h	6h	8h	10h	20h
1.85V/cell	117.1	98.5	87.4	72.5	56.7	48.52	31.41	23.62	19.35	16.28	14.19	11.39	9.700	5.175
1.80V/cell	134.0	110.6	96.6	78.7	61.2	51.21	33.77	25.38	20.57	17.26	15.04	11.98	10.010	5.355
1.75V/cell	152.2	124.7	106.8	85.5	66.7	55.83	35.12	26.39	21.28	17.66	15.51	12.38	10.279	5.491
1.70V/cell	171.9	138.3	117.9	93.4	71.9	59.07	37.00	27.78	22.23	18.68	16.25	12.90	10.674	5.631
1.67V/cell	184.6	148.1	125.4	98.6	76.1	61.10	38.36	28.89	23.11	19.26	16.82	13.34	10.973	5.806
1.60V/cell	203.1	162.2	136.2	105.2	79.0	62.93	39.33	29.64	23.62	19.73	17.17	13.57	11.203	5.900

恒功率放电表 (25°C/77°F) 单位: W														
F.V/Time	10min	15min	20min	30min	45min	1h	2h	3h	4h	5h	6h	8h	10h	20h
1.85V/cell	218.7	185.8	166.5	139.6	108.6	93.25	60.78	45.87	37.69	31.80	27.93	22.51	19.390	10.356
1.80V/cell	247.3	205.8	181.4	149.3	116.3	97.91	64.91	49.00	39.85	33.55	29.48	23.61	19.979	10.700
1.75V/cell	276.4	229.2	198.5	160.9	125.6	106.25	67.25	50.77	41.09	34.22	30.31	24.35	20.492	10.958
1.70V/cell	305.2	250.7	217.5	174.7	134.8	112.07	70.70	53.34	42.84	36.13	31.71	25.35	21.264	11.230
1.67V/cell	324.8	266.4	229.7	182.9	141.4	115.10	72.88	55.24	44.37	37.14	32.72	26.14	21.825	11.565
1.60V/cell	349.3	287.0	246.8	193.8	146.1	117.92	74.37	56.41	45.21	37.91	33.30	26.54	22.246	11.735