

Motive Battery

Energy Storage Battery

Reserve Battery

Motorcycle Battery



Maintenance Free VRLA AGM Battery - Long Life Type

TNL6-200

(6V 200Ah)

GENERAL FEATURES

- ♦ Oxygen recombination technology: maintenance-free, no need to add water or acid
- ♦ The patent grid alloy: less gassing, low self-discharge, excellent corrosion resistance
- ♦ Long life, low self-discharge rate and high reliability, deep discharge recoverability
- ♦ High quality AGM separator: extend cycle life and prevent micro short circuit
- ♦ ABS container: increase the strength of battery (Flame-retardant ABS UL94-V0 is optional)

Dimension

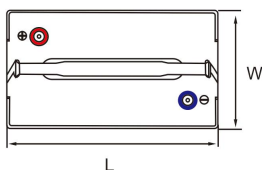
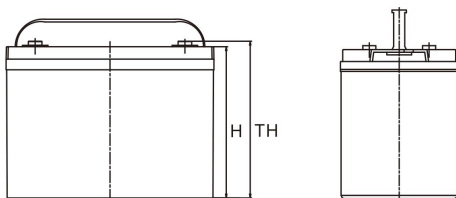
Unit:mm

Length 322±2mm / 12.68inch

Width 178±2mm / 7.01inch

Container Height 228±3mm / 8.98inch

Total Height 234±3mm / 9.21inch



Application

- ♦ Uninterrupted Power Supply (UPS)
- ♦ Communications and electric equipment
- ♦ Emergency lighting equipment
- ♦ Fire alarm and security system
- ♦ Robots, control equipment, and other factory automation equipment
- ♦ Emergency power supply (EPS)
- ♦ Portable VTR/TV, radio and so on
- ♦ Power tools, lawn mowers, vacuum cleaners
- ♦ Cameras and photographic equipment
- ♦ Portable measuring equipment
- ♦ Portable telephone sets
- ♦ Various power toys and hobby equipment
- ♦ Lighting equipment

Terminal

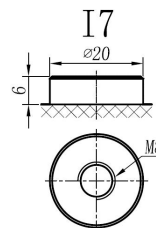
Unit:mm

Terminal Type: I7

Weight

35kg

77.38lbs



This document is subject to change without prior notification

Motive Battery

Reserve Battery



TNL6-200

Specificaion

Nominal Voltage	6V	
Rated Capacity(25°C)	215Ah	20hr Rate(1.80V/cell)
	200Ah	10hr Rate(1.80V/cell)
	177Ah	5hr Rate(1.75V/cell)
	167Ah	3hr Rate(1.70V/cell)
	126Ah	1hr Rate(1.60V/cell)
Container Material	ABS (Flame-retardant ABS UL94-V0 is optional)	
Operating Temperature Range	Discharge	-20 ~ +50°C
	Charge	0 ~ +40°C
	Storage	-15 ~ +40°C
Capacity Effected by Temperature	40°C / 104°F	106%
	25°C / 77°F	100%
	0°C / 32°F	86%
	-10°C / 14°F	65%
Charge	Float Voltage	2.23 -2.27V/cell@25°C, Tem.Coefficient : -3mV/cell/°C
	Equalize Voltage	2.35 -2.40V/cell@25°C, Tem.Coefficient : -3mV/cell/°C
	Cycle Voltage	2.40 -2.50V/cell@25°C, Tem.Coefficient : -5mV/cell°C
Max. Charging Current	60A (0.3C)	
Max. Discharge Current (5'	2000A	
Internal Resistance	1.4mΩ	
Self-Discharge	<3%, TN series stored at 25 °C require a supplementary charge every six months, the charging interval would shrink when the ambient temperature went higher	

Discharge Performance

Constant Current Discharge Table (25°C/77°F) Unit: A

F.V/Time	10min	15min	20min	30min	45min	1h	2h	3h	4h	5h	6h	8h	10h	20h
1.85V/cell	234.2	197.0	174.8	144.9	113.4	97.03	62.83	47.24	38.70	32.56	28.38	22.77	19.399	10.350
1.80V/cell	268.0	221.2	193.2	157.4	122.3	102.42	67.54	50.75	41.13	34.51	30.07	23.96	20.020	10.751
1.75V/cell	304.4	249.3	213.5	171.1	133.4	111.65	70.24	52.78	42.55	35.32	31.01	24.77	20.559	10.982
1.70V/cell	343.8	276.6	235.7	186.8	143.7	118.15	73.99	55.55	44.46	37.35	32.50	25.81	21.347	11.261
1.67V/cell	369.2	296.2	250.8	197.1	152.1	122.21	76.71	57.79	46.21	38.53	33.63	26.68	21.946	11.612
1.60V/cell	406.2	324.4	272.4	210.3	158.1	125.86	78.66	59.28	47.24	39.47	34.34	27.14	22.406	11.800

Constant Power Discharge Table (25°C/77°F) Unit: W

F.V/Time	10min	15min	20min	30min	45min	1h	2h	3h	4h	5h	6h	8h	10h	20h
1.85V/cell	437.4	371.5	332.9	279.2	217.2	186.50	121.57	91.74	75.38	63.59	55.86	45.01	38.779	20.711
1.80V/cell	494.6	411.7	362.8	298.6	232.5	195.82	129.82	98.01	79.70	67.09	58.96	47.22	39.958	21.400
1.75V/cell	552.9	458.3	397.1	321.8	251.2	212.49	134.51	101.53	82.17	68.44	60.61	48.69	40.983	21.916
1.70V/cell	610.4	501.5	435.1	349.5	269.6	224.14	141.41	106.67	85.68	72.26	63.43	50.70	42.528	22.459
1.67V/cell	649.6	532.9	459.4	365.8	282.8	230.19	145.76	110.49	88.74	74.28	65.43	52.28	43.650	23.130
1.60V/cell	698.5	574.1	493.7	387.6	292.3	235.84	148.75	112.82	90.42	75.83	66.60	53.08	44.492	23.470

☐ 动力电池

■ 储能电池

■ 备用电池

☐ 摩托车电池



阀控式免维护AGM电池-长寿命系列

TNL6-200

(6V 200Ah)

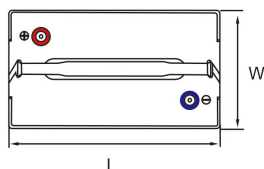
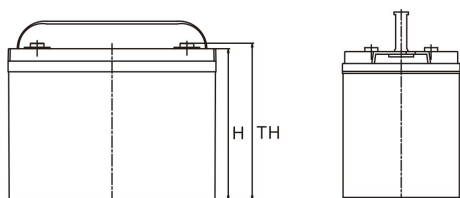
产品特点

- ◆ 阀控式免维护设计，寿命期间无需加水或加酸
- ◆ 专利稀土合金板栅，减少气体产生，自放电率低，抗腐蚀能力出众
- ◆ 电池寿命长，自放电率低具有高可靠性，深放电恢复能力出色
- ◆ 高质量AGM隔板：防止微短路，延长循环寿命
- ◆ ABS壳盖：电池外壳强度高（阻燃壳体UL94-V0可选）

尺寸

单个尺寸

长	322±2mm
宽	178±2mm
高	228±3mm
总高	234±3mm



产品应用

- ◆ 不间断电源(UPS)
- ◆ 通信和电力设备
- ◆ 紧急照明设备
- ◆ 火灾报警及安防系统
- ◆ 机器人、控制设备及其他机械自动化设备
- ◆ 应急电源系统
- ◆ 便携式音频设备
- ◆ 电动工具，割草机，真空吸尘器
- ◆ 照相设备
- ◆ 便携式测量工具
- ◆ 便携式通话设备
- ◆ 各式电动玩具及娱乐设施
- ◆ 照明设备

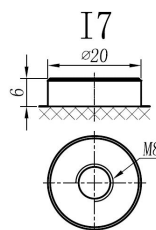
端子类型

单位:mm

端子类型 I7

重量

35kg 77.38lbs



ISO9001 ISO14001 OHSAS18001

内容如有改动，恕不另行通知

动力电池

备用电池



TNL6-200

规格书

额定电压	6V	
容量(25°C)	215Ah	20hr Rate(1.80V/cell)
	200Ah	10hr Rate(1.80V/cell)
	177Ah	5hr Rate(1.75V/cell)
	167Ah	3hr Rate(1.70V/cell)
	126Ah	1hr Rate(1.60V/cell)
壳体材料	ABS (阻燃ABS壳体可选)	
使用温度范围	放电	-20 ~ +50°C
	充电	0 ~ +40°C
	储存	-15 ~ +40°C
不同温度下 电池容量系数	40°C / 104°F	106%
	25°C / 77°F	100%
	0°C / 32°F	86%
	-10°C / 14°F	65%
充电	浮充电压	2.23 -2.27V/单格@25°C, 温度补偿系数: -3mV/单格/°C
	均充电压	2.35 -2.40V/单格@25°C, 温度补偿系数: -3mV/单格/°C
	循环使用电压	2.40 -2.50V/单格@25°C, 温度补偿系数: -5mV/单格/°C
最大充电电流	60A (0.3C)	
最大放电电流 (5S)	2000A	
电阻	1.4mΩ	
自放电	<3%, TN系列储存在25°C 时需每6个月进行一次补充充电, 环境温度更高时则充电间隔时间越短	

放电性能

恒电流放电表 (25°C/77°F) 单位: A														
F.V/Time	10min	15min	20min	30min	45min	1h	2h	3h	4h	5h	6h	8h	10h	20h
1.85V/cell	234.2	197.0	174.8	144.9	113.4	97.03	62.83	47.24	38.70	32.56	28.38	22.77	19.399	10.350
1.80V/cell	268.0	221.2	193.2	157.4	122.3	102.42	67.54	50.75	41.13	34.51	30.07	23.96	20.020	10.751
1.75V/cell	304.4	249.3	213.5	171.1	133.4	111.65	70.24	52.78	42.55	35.32	31.01	24.77	20.559	10.982
1.70V/cell	343.8	276.6	235.7	186.8	143.7	118.15	73.99	55.55	44.46	37.35	32.50	25.81	21.347	11.261
1.67V/cell	369.2	296.2	250.8	197.1	152.1	122.21	76.71	57.79	46.21	38.53	33.63	26.68	21.946	11.612
1.60V/cell	406.2	324.4	272.4	210.3	158.1	125.86	78.66	59.28	47.24	39.47	34.34	27.14	22.406	11.800

恒功率放电表 (25°C/77°F) 单位: W														
F.V/Time	10min	15min	20min	30min	45min	1h	2h	3h	4h	5h	6h	8h	10h	20h
1.85V/cell	437.4	371.5	332.9	279.2	217.2	186.50	121.57	91.74	75.38	63.59	55.86	45.01	38.779	20.711
1.80V/cell	494.6	411.7	362.8	298.6	232.5	195.82	129.82	98.01	79.70	67.09	58.96	47.22	39.958	21.400
1.75V/cell	552.9	458.3	397.1	321.8	251.2	212.49	134.51	101.53	82.17	68.44	60.61	48.69	40.983	21.916
1.70V/cell	610.4	501.5	435.1	349.5	269.6	224.14	141.41	106.67	85.68	72.26	63.43	50.70	42.528	22.459
1.67V/cell	649.6	532.9	459.4	365.8	282.8	230.19	145.76	110.49	88.74	74.28	65.43	52.28	43.650	23.130
1.60V/cell	698.5	574.1	493.7	387.6	292.3	235.84	148.75	112.82	90.42	75.83	66.60	53.08	44.492	23.470