

Motive Battery

Energy Storage Battery

Reserve Battery

Motorcycle Battery



## Maintenance Free-High Rate UPS Battery-TNX Series

# TNX12-120W

(12V 120W, 15min@1.67Vpc)

(12V 35Ah, C10 @1.80Vpc)

### GENERAL FEATURES

- ♦ Oxygen recombination technology: maintenance-free, no need to add water or acid during application
- ♦ Optimized plate design to increase power output at 15min backup time, high performance in high-rate discharge
- ♦ Wide operating temperature range from -20°C to 55°C, excellent deep discharge recovery capability
- ♦ New structure for plate grid, good corrosion resistance and greatly reduced resistance of the battery,
- ♦ 12 years design life @25°C, low self-discharge rate



### Application

- ♦ UPS ( High Rate )
- ♦ Communication Equipments
- ♦ Security systems
- ♦ Data & Network centers
- ♦ Emergency power supply ( EPS )
- ♦ Bank and financial system
- ♦ Hospitals & Testing laboratories

### Dimension

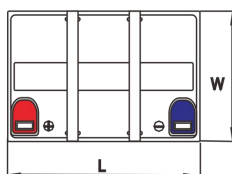
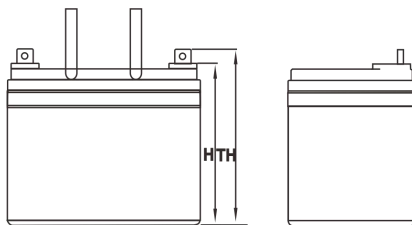
Unit:mm

Length 195±2mm / 7.68inch

Width 130±2mm / 5.12inch

Container Height 157.5±3mm / 6.2inch

Total Height 162±3mm / 6.38inch



### Terminal

Unit:mm

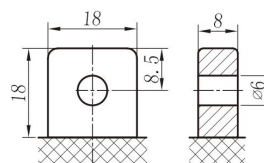
Terminal Type: I1/I2

### Weight

10.5kg

23.15lbs

B2



ISO9001 ISO14001 OHSAS18001

This document is subject to change without prior notification

- Motive Battery     Energy Storage Battery  
 Reserve Battery     Motorcycle Battery



## TNX12-120W

### Specification

<b>Nominal Voltage</b>	12V	
<b>Rated Power (15min Rate 25°C)</b>	120W F.V (1.67V/cell)	
<b>Rated Capacity (10HR 25°C)</b>	34.5Ah (1.80V/cell)	
<b>Dimension</b>	<b>Length</b>	195±2mm / 7.68inch
	<b>Width</b>	130±2mm / 5.12inch
	<b>Container Height</b>	157.5±3mm / 6.2inch
	<b>Total Height</b>	162±3mm / 6.38inch
<b>Weight</b>	10.5kg / 23.15lbs	
<b>Terminal</b>	I1/I2	
<b>Container Material</b>	ABS ( Flame-retardant ABS UL94-V0 is optional )	
<b>Operating Temperature Range</b>	<b>Discharge</b>	-20 ~ +50°C
	<b>Charge</b>	0 ~ +40°C
	<b>Storage</b>	-15 ~ +40°C
<b>Capacity Effected by Temperature</b>	<b>40°C / 104°F</b>	106%
	<b>25°C / 77°F</b>	100%
	<b>0°C / 32°F</b>	86%
	<b>-10°C / 14°F</b>	65%
<b>Charge</b>	<b>Float Voltage</b>	2.25 -2.27V/cell@25°C, Tem.Coefficient : -3mV/cell/°C
	<b>Equalize Voltage</b>	2.40 -2.50V/cell@25°C, Tem.Coefficient : -3mV/cell/°C
	<b>Cycle Voltage</b>	2.40 -2.50V/cell@25°C, Tem.Coefficient : -5mV/cell/°C
<b>Max. Charging Current</b>	10.5A ( 0.3C )	
<b>Max. Discharge Current (5S)</b>	525A	
<b>Internal Resistance</b>	12mΩ	
<b>Self-Discharge</b>	<3%, TNX series stored at 25 °C require a supplementary charge every six months, the charging interval would shrink when the ambient temperature went higher	

### Discharge Performance

Constant Current Discharge Table (25°C/77°F) Unit: A															
F.V/Time	5min	10min	15min	20min	30min	45min	1h	2h	3h	4h	5h	6h	8h	10h	20h
1.85V/cell	71.6	57.2	50.4	42.9	32.4	24.1	19.38	11.47	8.56	6.97	5.91	5.18	4.19	3.377	1.734
1.80V/cell	82.3	64.2	54.5	46.0	34.2	25.4	20.37	11.85	8.87	7.18	6.11	5.34	4.28	3.450	1.774
1.75V/cell	91.8	70.4	58.4	49.0	35.9	26.4	21.16	12.26	9.11	7.37	6.24	5.44	4.35	3.488	1.794
1.70V/cell	103.3	75.5	62.6	51.6	37.7	27.5	21.99	12.71	9.41	7.56	6.37	5.55	4.40	3.528	1.814
1.67V/cell	112.8	81.3	65.6	54.1	39.3	28.6	22.77	13.12	9.67	7.75	6.52	5.65	4.48	3.588	1.824
1.60V/cell	121.8	86.2	69.1	56.3	40.7	29.7	23.56	13.55	9.89	7.92	6.65	5.75	4.54	3.639	1.845

Constant Power Discharge Table (25°C/77°F) Unit: W															
F.V/Time	5min	10min	15min	20min	30min	45min	1h	2h	3h	4h	5h	6h	8h	10h	20h
1.85V/cell	133.1	107.4	95.4	82.0	62.4	46.6	37.63	22.39	16.78	13.71	11.66	10.25	8.31	6.855	3.527
1.80V/cell	151.6	119.7	102.6	87.4	65.5	48.9	39.44	23.05	17.32	14.06	11.99	10.51	8.46	6.971	3.594
1.75V/cell	167.6	130.2	109.4	92.6	68.4	50.7	40.86	23.78	17.73	14.40	12.22	10.67	8.55	7.028	3.621
1.70V/cell	186.9	138.7	116.4	97.0	71.5	52.6	42.32	24.57	18.26	14.72	12.44	10.85	8.63	7.084	3.651
1.67V/cell	202.3	148.2	120.1	101.3	74.3	54.6	43.73	25.30	18.73	15.06	12.70	11.03	8.77	7.191	3.662
1.60V/cell	216.4	156.0	127.1	104.9	76.8	56.4	45.08	26.05	19.09	15.35	12.91	11.19	8.86	7.270	3.691

动力电池

储能电池

备用电池

摩托车电池



阀控免维护-高功率UPS电池-TNX系列

# TNX12-120W

(12V 120W, 15min@1.67Vpc)

(12V 35Ah, C10 @1.80Vpc)

## 产品特点：

- ◆ 氧复合技术: 阀控式免维护, 使用期间无需加水或加酸
- ◆ 极板优化处理, 提升15分钟放电性能, 高倍率放电性能优异
- ◆ 在-20°C到55°C温度区间内均可正常使用, 深放电恢复能力出色
- ◆ 隔板特色设计, 抗腐蚀性能佳, 同时大幅度降低电池内阻
- ◆ 12年设计寿命(25°C), 自放电率低



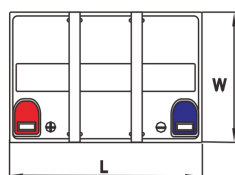
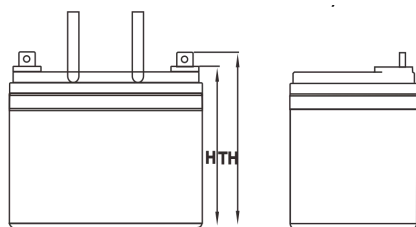
## 产品应用

- ◆ 不间断电源(高功率)
- ◆ 通讯设备
- ◆ 安全系统
- ◆ 数据网络中心
- ◆ 应急电源系统
- ◆ 银行资金系统
- ◆ 医疗测试设备

## 尺寸

单个尺寸

长 195±2mm / 7.68inch  
 宽 130±2mm / 5.12inch  
 高 157.5±3mm / 6.2inch  
 总高 162±3mm / 6.38inch



## 端子类型

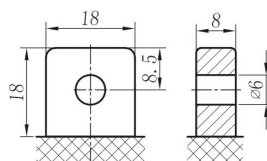
单位:mm

端子类型 I1/I2

## 重量

10.5kg 23.15lbs

B2



ISO9001 ISO14001 OHSAS18001

内容如有改动, 恕不另行通知

□ 动力电池

□ 储能电池

■ 备用电池

□ 摩托车电池



# TNX12-120W

## 规格书

额定电压	12V	
15分钟放电功率	120W F.V (1.67V/cell)	
额定容量 (10小时)	34.5Ah (1.80V/cell)	
尺寸	长	195±2mm
	宽	130±2mm
	高	157.5±3mm
	总高	162±3mm
重量	10.5kg	
端子	I1/I2	
壳体材料	ABS (阻燃ABS壳体可选)	
使用温度范围	放电	-20 ~ +50°C
	充电	0 ~ +40°C
	储存	-15 ~ +40°C
不同温度下 电池容量系数	40°C / 104°F	106%
	25°C / 77°F	100%
	0°C / 32°F	86%
	-10°C / 14°F	65%
充电	浮充电压	2.25 -2.27V/单格@25°C, 温度补偿系数: -3mV/单格/°C
	均充电压	2.40 -2.50V/单格@25°C, 温度补偿系数: -3mV/单格/°C
	循环使用电压	2.40 -2.50V/单格@25°C, 温度补偿系数: -5mV/单格/°C
最大充电电流	10.5A (0.3C)	
最大放电电流 (5S)	525A	
电阻	12mΩ	
自放电	<3%, TNX系列储存在25°C时需每6个月进行一次补充充电, 环境温度更高时则充电间隔时间越短	

## 放电性能

恒电流放电表 (25°C/77°F) 单位: A															
F.V/Time	5min	10min	15min	20min	30min	45min	1h	2h	3h	4h	5h	6h	8h	10h	20h
1.85V/cell	71.6	57.2	50.4	42.9	32.4	24.1	19.38	11.47	8.56	6.97	5.91	5.18	4.19	3.377	1.734
1.80V/cell	82.3	64.2	54.5	46.0	34.2	25.4	20.37	11.85	8.87	7.18	6.11	5.34	4.28	3.450	1.774
1.75V/cell	91.8	70.4	58.4	49.0	35.9	26.4	21.16	12.26	9.11	7.37	6.24	5.44	4.35	3.488	1.794
1.70V/cell	103.3	75.5	62.6	51.6	37.7	27.5	21.99	12.71	9.41	7.56	6.37	5.55	4.40	3.528	1.814
1.67V/cell	112.8	81.3	65.6	54.1	39.3	28.6	22.77	13.12	9.67	7.75	6.52	5.65	4.48	3.588	1.824
1.60V/cell	121.8	86.2	69.1	56.3	40.7	29.7	23.56	13.55	9.89	7.92	6.65	5.75	4.54	3.639	1.845

恒功率放电表 (25°C/77°F) 单位: W															
F.V/Time	5min	10min	15min	20min	30min	45min	1h	2h	3h	4h	5h	6h	8h	10h	20h
1.85V/cell	133.1	107.4	95.4	82.0	62.4	46.6	37.63	22.39	16.78	13.71	11.66	10.25	8.31	6.855	3.527
1.80V/cell	151.6	119.7	102.6	87.4	65.5	48.9	39.44	23.05	17.32	14.06	11.99	10.51	8.46	6.971	3.594
1.75V/cell	167.6	130.2	109.4	92.6	68.4	50.7	40.86	23.78	17.73	14.40	12.22	10.67	8.55	7.028	3.621
1.70V/cell	186.9	138.7	116.4	97.0	71.5	52.6	42.32	24.57	18.26	14.72	12.44	10.85	8.63	7.084	3.651
1.67V/cell	202.3	148.2	120.1	101.3	74.3	54.6	43.73	25.30	18.73	15.06	12.70	11.03	8.77	7.191	3.662
1.60V/cell	216.4	156.0	127.1	104.9	76.8	56.4	45.08	26.05	19.09	15.35	12.91	11.19	8.86	7.270	3.691