

Motive Battery

Energy Storage Battery

Reserve Battery

Motorcycle Battery



Maintenance Free-High Rate UPS Battery-TNX Series

TNX12-360W

(12V 360W, 15min@1.67Vpc)

(12V 105Ah, C10 @1.80Vpc)

GENERAL FEATURES

- Oxygen recombination technology: maintenance-free, no need to add water or acid during application
- Optimized plate design to increase power output at 15min backup time, high performance in high-rate discharge
- Wide operating temperature range from -20°C to 55°C, excellent deep discharge recovery capability
- New structure for plate grid, good corrosion resistance and greatly reduced resistance of the battery,
- 12 years design life @25°C, low self-discharge rate



Application

- UPS (High Rate)
- Communication Equipments
- Security systems
- Data & Network centers
- Emergency power supply (EPS)
- Bank and financial system
- Hospitals & Testing laboratories

Dimension

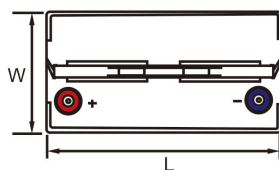
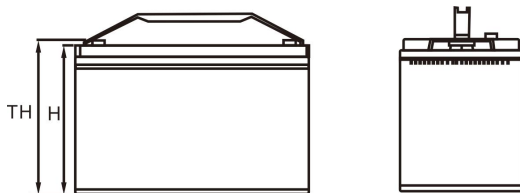
Unit:mm

Length 330±2mm / 12.99inch

Width 172±2mm / 6.77inch

Container Height 214±3mm / 8.43inch

Total Height 221.5±3mm / 8.72inch



Terminal

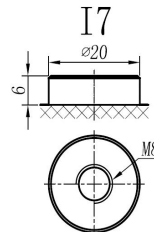
Unit:mm

Terminal Type: I7

Weight

29.8kg

65.7lbs



This document is subject to change without prior notification

- Motive Battery Energy Storage Battery
 Reserve Battery Motorcycle Battery



TNX12-360W

Specifaion

Nominal Voltage	12V	
Rated Power (15min Rate 25°C)	360W F.V (1.67V/cell)	
Rated Capacity (10HR 25°C)	106Ah (1.80V/cell)	
Dimension	Length	330±2mm / 12.99inch
	Width	172±2mm / 6.77inch
	Container Height	214±3mm / 8.43inch
	Total Height	221.5±3mm / 8.72inch
Weight	29.8kg / 65.7lbs	
Terminal	I7	
Container Material	ABS (Flame-retardant ABS UL94-V0 is optional)	
Operating Temperature Range	Discharge	-20 ~ +50°C
	Charge	0 ~ +40°C
	Storage	-15 ~ +40°C
Capacity Effected by Temperature	40°C / 104°F	106%
	25°C / 77°F	100%
	0°C / 32°F	86%
	-10°C / 14°F	65%
Charge	Float Voltage	2.25 -2.27V/cell@25°C, Tem.Coefficient : -3mV/cell/°C
	Equalize Voltage	2.40 -2.50V/cell@25°C, Tem.Coefficient : -3mV/cell/°C
	Cycle Voltage	2.40 -2.50V/cell@25°C, Tem.Coefficient : -5mV/cell/°C
Max. Charging Current	31.5A (0.3C)	
Max. Discharge Current (5S)	1200A	
Internal Resistance	4.9mΩ	
Self-Discharge	<3%, TNX series stored at 25 °C require a supplementary charge every six months, the charging interval would shrink when the ambient temperature went higher	

Discharge Performance

Constant Current Discharge Table (25°C/77°F) Unit: A															
F.V/Time	5min	10min	15min	20min	30min	45min	1h	2h	3h	4h	5h	6h	8h	10h	20h
1.85V/cell	199.0	160.7	143.0	122.1	91.9	69.9	58.61	34.35	25.06	20.11	17.00	15.04	12.31	10.200	5.263
1.80V/cell	242.2	190.6	159.9	132.3	98.7	73.9	62.21	36.62	26.61	21.27	17.98	15.83	12.88	10.604	5.448
1.75V/cell	280.5	210.4	173.0	140.9	102.8	77.6	63.86	37.54	27.37	21.73	18.42	16.12	13.03	10.695	5.499
1.70V/cell	311.7	223.0	185.0	147.1	105.9	80.5	65.92	38.21	27.84	22.17	18.77	16.31	13.12	10.792	5.544
1.67V/cell	328.5	237.9	195.1	153.6	109.6	82.9	67.98	38.99	28.19	22.63	19.10	16.58	13.27	10.894	5.595
1.60V/cell	351.8	251.3	204.8	160.7	113.9	84.7	70.25	39.66	28.77	22.99	19.34	16.79	13.40	10.985	5.646

Constant Power Discharge Table (25°C/77°F) Unit: W															
F.V/Time	5min	10min	15min	20min	30min	45min	1h	2h	3h	4h	5h	6h	8h	10h	20h
1.85V/cell	368.8	299.1	271.5	233.6	177.0	135.5	114.18	67.16	49.20	39.62	33.58	29.79	24.45	20.503	10.600
1.80V/cell	444.7	352.3	301.7	251.7	189.2	142.5	120.66	71.38	52.05	41.75	35.39	31.23	25.49	21.239	10.930
1.75V/cell	510.5	386.0	324.6	266.9	196.3	149.2	123.54	72.96	53.35	42.51	36.13	31.69	25.69	21.340	10.987
1.70V/cell	562.0	405.8	344.8	277.2	201.4	154.3	127.14	74.04	54.14	43.24	36.69	31.97	25.78	21.457	11.044
1.67V/cell	586.1	428.7	360.4	287.3	207.3	158.3	130.58	75.27	54.67	44.05	37.26	32.44	26.03	21.616	11.118
1.60V/cell	619.8	448.2	375.0	298.1	213.8	160.7	134.31	76.25	55.58	44.58	37.61	32.76	26.21	21.733	11.186

动力电池

储能电池

备用电池

摩托车电池



阀控免维护-高功率UPS电池-TNX系列

TNX12-360W

(12V 360W, 15min@1.67Vpc)

(12V 105Ah, C10 @1.80Vpc)

产品特点：

- ◆ 氧复合技术: 阀控式免维护, 使用期间无需加水或加酸
- ◆ 极板优化处理, 提升15分钟放电性能, 高倍率放电性能优异
- ◆ 在-20°C到55°C温度区间内均可正常使用, 深放电恢复能力出色
- ◆ 隔板特色设计, 抗腐蚀性能佳, 同时大幅度降低电池内阻
- ◆ 12年设计寿命(25°C), 自放电率低



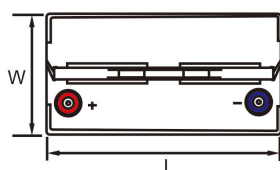
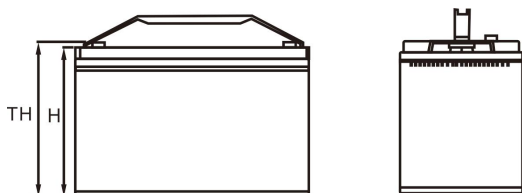
产品应用

- ◆ 不间断电源(高功率)
- ◆ 通讯设备
- ◆ 安全系统
- ◆ 数据网络中心
- ◆ 应急电源系统
- ◆ 银行资金系统
- ◆ 医疗测试设备

尺寸

单个尺寸

长 330±2mm / 12.99inch
 宽 172±2mm / 6.77inch
 高 214±3mm / 8.43inch
 总高 221.5±3mm / 8.72inch



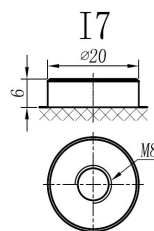
端子类型

单位:mm

端子类型 I7

重量

29.8kg 65.7lbs



ISO9001 ISO14001 OHSAS18001

内容如有改动, 恕不另行通知

动力电池

储能电池

备用电池

摩托车电池



TNX12-360W

规格书

额定电压	12V	
15分钟放电功率	360W F.V (1.67V/cell)	
额定容量 (10小时)	106Ah (1.80V/cell)	
尺寸	长	330±2mm
	宽	172±2mm
	高	214±3mm
	总高	221.5±3mm
重量	29.8kg	
端子	I7	
壳体材料	ABS (阻燃ABS壳体可选)	
使用温度范围	放电	-20 ~ +50°C
	充电	0 ~ +40°C
	储存	-15 ~ +40°C
不同温度下 电池容量系数	40°C / 104°F	106%
	25°C / 77°F	100%
	0°C / 32°F	86%
	-10°C / 14°F	65%
充电	浮充电压	2.25 -2.27V/单格@25°C, 温度补偿系数: -3mV/单格/°C
	均充电压	2.40 -2.50V/单格@25°C, 温度补偿系数: -3mV/单格/°C
	循环使用电压	2.40 -2.50V/单格@25°C, 温度补偿系数: -5mV/单格/°C
最大充电电流	31.5A (0.3C)	
最大放电电流 (5S)	1200A	
电阻	4.9mΩ	
自放电	<3%, TNX系列储存在25°C时需每6个月进行一次补充充电, 环境温度更高时则充电间隔时间越短	

放电性能

恒电流放电表 (25°C/77°F) 单位: A															
F.V/Time	5min	10min	15min	20min	30min	45min	1h	2h	3h	4h	5h	6h	8h	10h	20h
1.85V/cell	199.0	160.7	143.0	122.1	91.9	69.9	58.61	34.35	5.26	#REF!	#REF!	#REF!	#REF!	#REF!	#REF!
1.80V/cell	242.2	190.6	159.9	132.3	98.7	73.9	62.21	36.62	5.45	#REF!	#REF!	#REF!	#REF!	#REF!	#REF!
1.75V/cell	280.5	210.4	173.0	140.9	102.8	77.6	63.86	37.54	5.50	#REF!	#REF!	#REF!	#REF!	#REF!	#REF!
1.70V/cell	311.7	223.0	185.0	147.1	105.9	80.5	65.92	38.21	5.54	#REF!	#REF!	#REF!	#REF!	#REF!	#REF!
1.67V/cell	328.5	237.9	195.1	153.6	109.6	82.9	67.98	38.99	5.59	#REF!	#REF!	#REF!	#REF!	#REF!	#REF!
1.60V/cell	351.8	251.3	204.8	160.7	113.9	84.7	70.25	39.66	5.65	#REF!	#REF!	#REF!	#REF!	#REF!	#REF!

恒功率放电表 (25°C/77°F) 单位: W															
F.V/Time	5min	10min	15min	20min	30min	45min	1h	2h	3h	4h	5h	6h	8h	10h	20h
1.85V/cell	368.8	299.1	271.5	233.6	177.0	135.5	114.18	67.16	49.20	39.62	33.58	29.79	24.45	20.503	10.600
1.80V/cell	444.7	352.3	301.7	251.7	189.2	142.5	120.66	71.38	52.05	41.75	35.39	31.23	25.49	21.239	10.930
1.75V/cell	510.5	386.0	324.6	266.9	196.3	149.2	123.54	72.96	53.35	42.51	36.13	31.69	25.69	21.340	10.987
1.70V/cell	562.0	405.8	344.8	277.2	201.4	154.3	127.14	74.04	54.14	43.24	36.69	31.97	25.78	21.457	11.044
1.67V/cell	586.1	428.7	360.4	287.3	207.3	158.3	130.58	75.27	54.67	44.05	37.26	32.44	26.03	21.616	11.118
1.60V/cell	619.8	448.2	375.0	298.1	213.8	160.7	134.31	76.25	55.58	44.58	37.61	32.76	26.21	21.733	11.186