

Motive Battery

Energy Storage Battery

Reserve Battery

Motorcycle Battery



## Maintenance Free-High Rate UPS Battery-TNX Series

# TNX12-70W

(12V 67W, 15min@1.67Vpc)

(12V 21Ah, C10 @1.80Vpc)

### GENERAL FEATURES

- Oxygen recombination technology: maintenance-free, no need to add water or acid during application
- Optimized plate design to increase power output at 15min backup time, high performance in high-rate discharge
- Wide operating temperature range from -20°C to 55°C, excellent deep discharge recovery capability
- New structure for plate grid, good corrosion resistance and greatly reduced resistance of the battery,
- 12 years design life @25°C, low self-discharge rate



### Application

- UPS ( High Rate )
- Communication Equipments
- Security systems
- Data & Network centers
- Emergency power supply ( EPS )
- Bank and financial system
- Hospitals & Testing laboratories

### Dimension

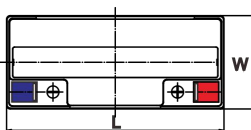
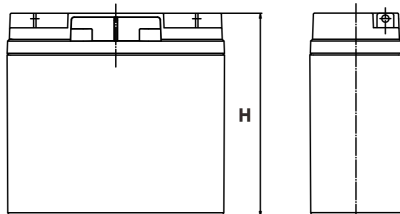
Unit:mm

Length 182±2mm / 7.17inch

Width 77±2mm / 3.03inch

Container Height 170±3mm / 6.69inch

Total Height 170±3mm / 6.69inch



### Terminal

Unit:mm

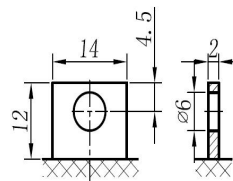
Terminal Type: L1

### Weight

6kg

13.23lbs

L1



This document is subject to change without prior notification

- Motive Battery     Energy Storage Battery  
 Reserve Battery     Motorcycle Battery



## TNX12-70W

### Specifaion

<b>Nominal Voltage</b>	12V	
<b>Rated Power (15min Rate 25°C)</b>	67W F.V (1.67V/cell)	
<b>Rated Capacity (10HR 25°C)</b>	19.5Ah (1.80V/cell)	
<b>Dimension</b>	<b>Length</b>	182±2mm / 7.17inch
	<b>Width</b>	77±2mm / 3.03inch
	<b>Container Height</b>	170±3mm / 6.69inch
	<b>Total Height</b>	170±3mm / 6.69inch
<b>Weight</b>	6kg / 13.23lbs	
<b>Terminal</b>	L1	
<b>Container Material</b>	ABS ( Flame-retardant ABS UL94-V0 is optional )	
<b>Operating Temperature Range</b>	<b>Discharge</b>	-20 ~ +50°C
	<b>Charge</b>	0 ~ +40°C
	<b>Storage</b>	-15 ~ +40°C
<b>Capacity Effected by Temperature</b>	<b>40°C / 104°F</b>	106%
	<b>25°C / 77°F</b>	100%
	<b>0°C / 32°F</b>	86%
	<b>-10°C / 14°F</b>	65%
<b>Charge</b>	<b>Float Voltage</b>	2.25 -2.27V/cell@25°C, Tem.Coefficient : -3mV/cell/°C
	<b>Equalize Voltage</b>	2.40 -2.50V/cell@25°C, Tem.Coefficient : -3mV/cell/°C
	<b>Cycle Voltage</b>	2.40 -2.50V/cell@25°C, Tem.Coefficient : -5mV/cell/°C
<b>Max. Charging Current</b>	6.3A ( 0.3C )	
<b>Max. Discharge Current (5S)</b>	270A	
<b>Internal Resistance</b>	14.5mΩ	
<b>Self-Discharge</b>	<3%, TNX series stored at 25 °C require a supplementary charge every six months, the charging interval would shrink when the ambient temperature went higher	

### Discharge Performance

Constant Current Discharge Table (25°C/77°F) Unit: A															
F.V/Time	5min	10min	15min	20min	30min	45min	1h	2h	3h	4h	5h	6h	8h	10h	20h
1.85V/cell	57.2	37.9	31.3	26.2	19.8	14.6	11.72	6.73	4.89	3.93	3.31	2.84	2.25	1.868	1.039
1.80V/cell	62.8	41.7	33.9	28.3	20.8	15.4	12.16	7.08	5.20	4.15	3.46	2.99	2.34	1.946	1.050
1.75V/cell	67.8	45.4	36.0	29.9	21.8	15.9	12.60	7.29	5.34	4.24	3.55	3.05	2.39	1.968	1.061
1.70V/cell	71.6	47.9	37.8	31.2	22.6	16.5	13.05	7.51	5.48	4.33	3.63	3.11	2.43	1.998	1.073
1.67V/cell	75.4	50.2	39.1	32.1	23.3	16.9	13.38	7.68	5.54	4.40	3.67	3.17	2.47	2.023	1.084
1.60V/cell	80.2	52.1	40.3	32.7	23.6	17.1	13.55	7.80	5.63	4.46	3.73	3.20	2.48	2.034	1.095

Constant Power Discharge Table (25°C/77°F) Unit: W															
F.V/Time	5min	10min	15min	20min	30min	45min	1h	2h	3h	4h	5h	6h	8h	10h	20h
1.85V/cell	103.7	68.9	57.1	48.0	36.5	27.2	21.98	12.70	9.27	7.47	6.30	5.41	4.31	3.589	2.000
1.80V/cell	110.3	74.2	61.0	51.4	38.2	28.4	22.66	13.26	9.78	7.85	6.55	5.68	4.50	3.734	2.018
1.75V/cell	117.9	79.9	64.0	53.8	39.6	29.3	23.38	13.60	10.02	7.99	6.70	5.79	4.57	3.772	2.037
1.70V/cell	122.8	83.2	66.6	55.7	40.9	30.1	24.12	13.98	10.25	8.14	6.84	5.89	4.64	3.827	2.056
1.67V/cell	127.4	85.9	67.4	56.9	41.9	30.7	24.60	14.25	10.32	8.24	6.90	5.99	4.69	3.869	2.075
1.60V/cell	133.1	87.8	68.9	56.9	41.8	30.8	24.74	14.42	10.44	8.32	6.98	6.02	4.71	3.884	2.093

动力电池

储能电池

备用电池

摩托车电池



## 阀控免维护-高功率UPS电池-TNX系列

# TNX12-70W

(12V 67W, 15min@1.67Vpc)

(12V 21Ah, C10 @1.80Vpc)

### 产品特点：

- 氧复合技术: 阀控式免维护, 使用期间无需加水或加酸
- 极板优化处理, 提升15分钟放电性能, 高倍率放电性能优异
- 在-20°C到55°C温度区间内均可正常使用, 深放电恢复能力出色
- 隔板特色设计, 抗腐蚀性能佳, 同时大幅度降低电池内阻
- 12年设计寿命(25°C), 自放电率低



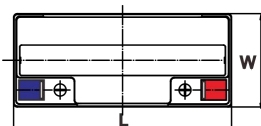
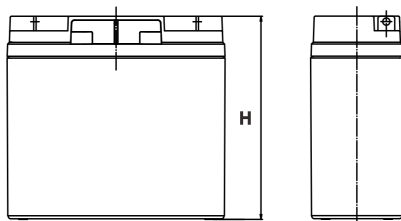
### 产品应用

- 不间断电源(高功率)
- 通讯设备
- 安全系统
- 数据网络中心
- 应急电源系统
- 银行资金系统
- 医疗测试设备

### 尺寸

单个尺寸

长	182±2mm / 7.17inch
宽	77±2mm / 3.03inch
高	170±3mm / 6.69inch
总高	170±3mm / 6.69inch



### 端子类型

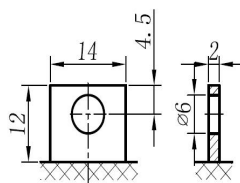
单位:mm

端子类型 L1

### 重量

6kg 13.23lbs

L1



ISO9001 ISO14001 OHSAS18001

内容如有改动, 恕不另行通知

动力电池

储能电池

备用电池

摩托车电池



## TNX12-70W

### 规格书

额定电压	12V	
15分钟放电功率	67W F.V (1.67V/cell)	
额定容量 (10小时)	19.5Ah (1.80V/cell)	
尺寸	长	182±2mm
	宽	77±2mm
	高	170±3mm
	总高	170±3mm
重量	6kg	
端子	L1	
壳体材料	ABS (阻燃ABS壳体可选)	
使用温度范围	放电	-20 ~ +50°C
	充电	0 ~ +40°C
	储存	-15 ~ +40°C
不同温度下 电池容量系数	40°C / 104°F	106%
	25°C / 77°F	100%
	0°C / 32°F	86%
	-10°C / 14°F	65%
充电	浮充电压	2.25 -2.27V/单格@25°C, 温度补偿系数: -3mV/单格/°C
	均充电压	2.40 -2.50V/单格@25°C, 温度补偿系数: -3mV/单格/°C
	循环使用电压	2.40 -2.50V/单格@25°C, 温度补偿系数: -5mV/单格/°C
最大充电电流	6.3A (0.3C)	
最大放电电流 (5S)	270A	
电阻	14.5mΩ	
自放电	<3%, TNX系列储存在25°C时需每6个月进行一次补充充电, 环境温度更高时则充电间隔时间越短	

### 放电性能

恒电流放电表 (25°C/77°F) 单位: A															
F.V/Time	5min	10min	15min	20min	30min	45min	1h	2h	3h	4h	5h	6h	8h	10h	20h
1.85V/cell	57.2	37.9	31.3	26.2	19.8	14.6	11.72	6.73	4.89	3.93	3.31	2.84	2.25	1.868	1.039
1.80V/cell	62.8	41.7	33.9	28.3	20.8	15.4	12.16	7.08	5.20	4.15	3.46	2.99	2.34	1.946	1.050
1.75V/cell	67.8	45.4	36.0	29.9	21.8	15.9	12.60	7.29	5.34	4.24	3.55	3.05	2.39	1.968	1.061
1.70V/cell	71.6	47.9	37.8	31.2	22.6	16.5	13.05	7.51	5.48	4.33	3.63	3.11	2.43	1.998	1.073
1.67V/cell	75.4	50.2	39.1	32.1	23.3	16.9	13.38	7.68	5.54	4.40	3.67	3.17	2.47	2.023	1.084
1.60V/cell	80.2	52.1	40.3	32.7	23.6	17.1	13.55	7.80	5.63	4.46	3.73	3.20	2.48	2.034	1.095

恒功率放电表 (25°C/77°F) 单位: W															
F.V/Time	5min	10min	15min	20min	30min	45min	1h	2h	3h	4h	5h	6h	8h	10h	20h
1.85V/cell	103.7	68.9	57.1	48.0	36.5	27.2	21.98	12.70	9.27	7.47	6.30	5.41	4.31	3.589	2.000
1.80V/cell	110.3	74.2	61.0	51.4	38.2	28.4	22.66	13.26	9.78	7.85	6.55	5.68	4.50	3.734	2.018
1.75V/cell	117.9	79.9	64.0	53.8	39.6	29.3	23.38	13.60	10.02	7.99	6.70	5.79	4.57	3.772	2.037
1.70V/cell	122.8	83.2	66.6	55.7	40.9	30.1	24.12	13.98	10.25	8.14	6.84	5.89	4.64	3.827	2.056
1.67V/cell	127.4	85.9	67.4	56.9	41.9	30.7	24.60	14.25	10.32	8.24	6.90	5.99	4.69	3.869	2.075
1.60V/cell	133.1	87.8	68.9	56.9	41.8	30.8	24.74	14.42	10.44	8.32	6.98	6.02	4.71	3.884	2.093